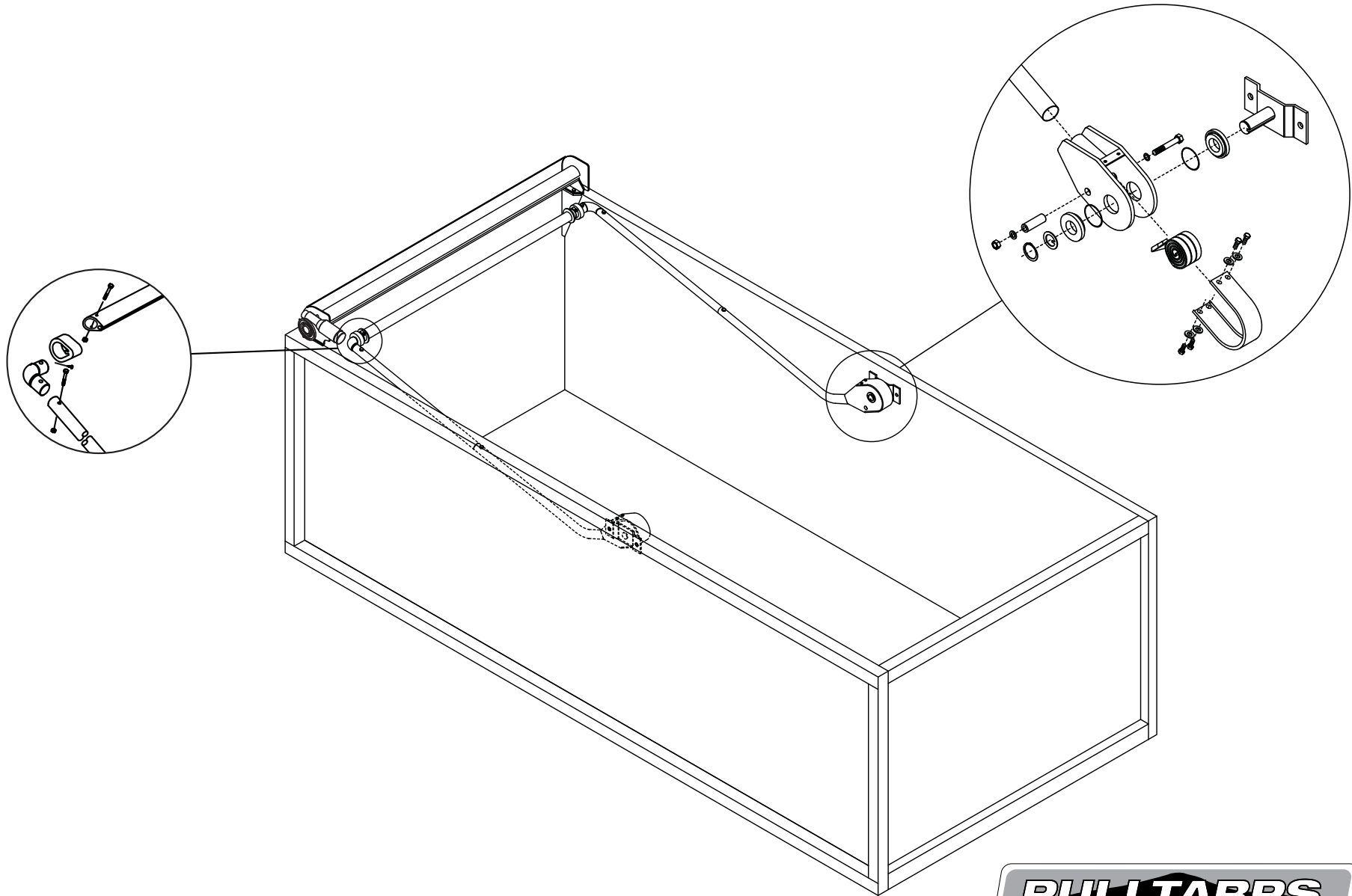


Installation Instructions - Inside the Box and High Mount Arm Kits

Electric Arm Kits - 501-0703, 501-0774, 501-0780, 501-0781



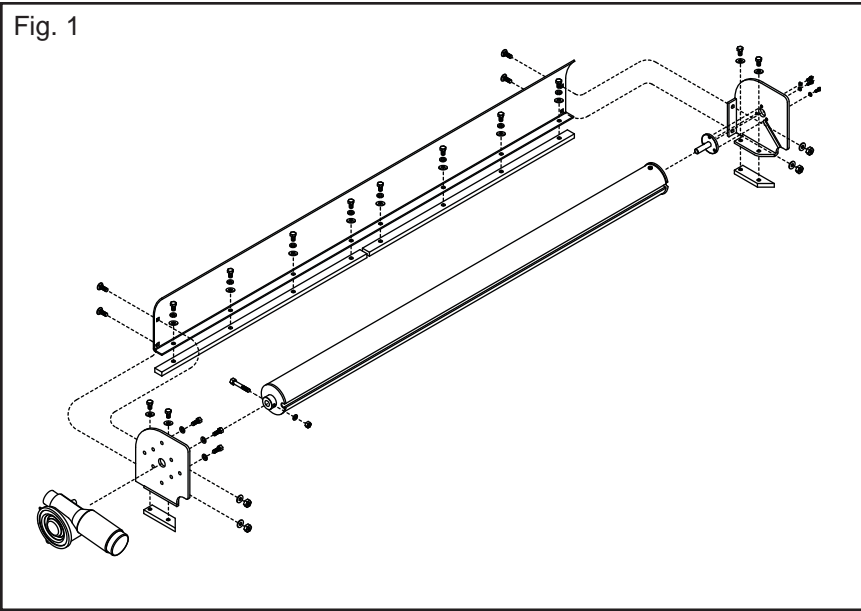
607-0019

NB 7/26/11



1404 N. Marshall Ave. El Cajon CA. 92020
For technical support call us at (800) 368-3075

Fig. 1

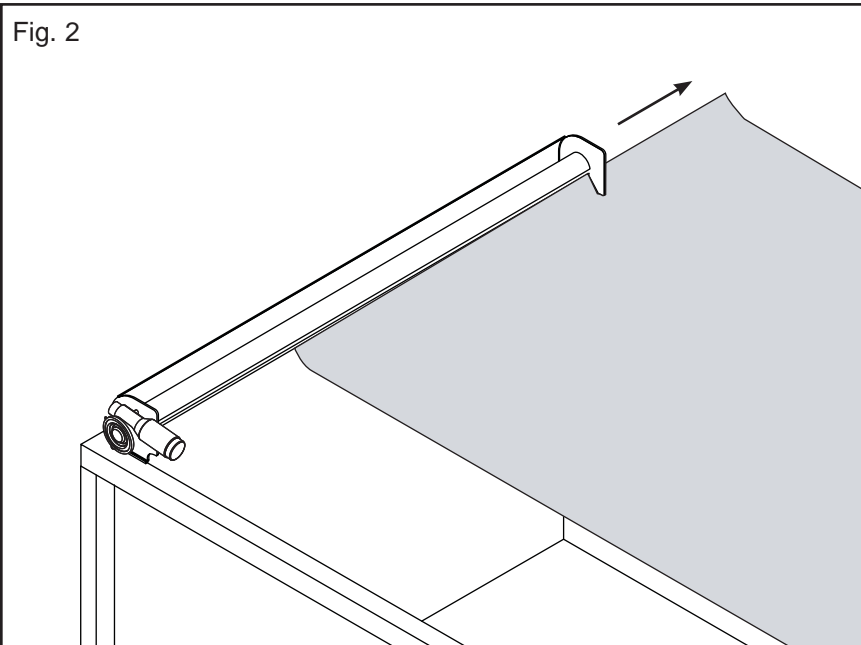


System Assembly Fig. 1

Step 1. Remove Tarp Before Welding

Before welding remove tarp to avoid damage (Fig. 2)
To remove tarp slide the tarp out of the slotted end of the housing and remove from work area.

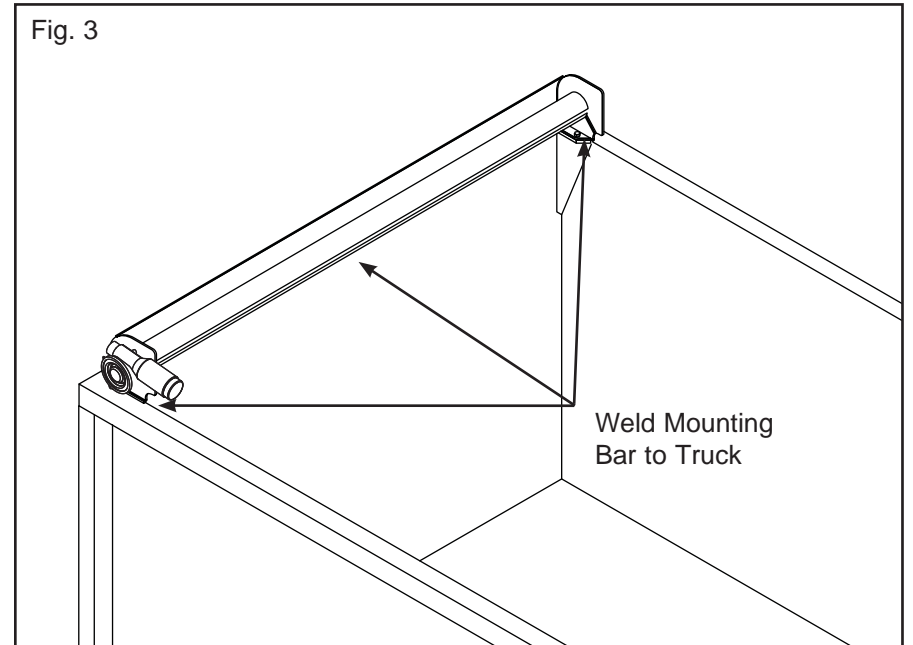
Fig. 2



Step 2. Weld System To Truck

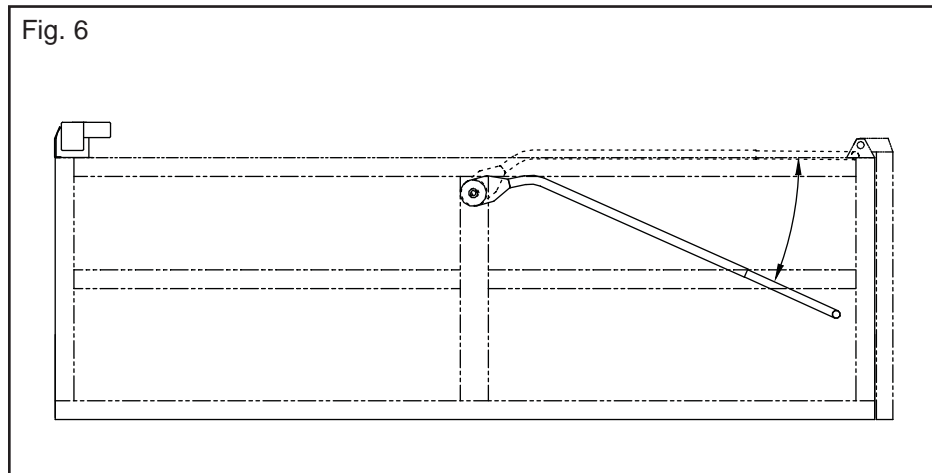
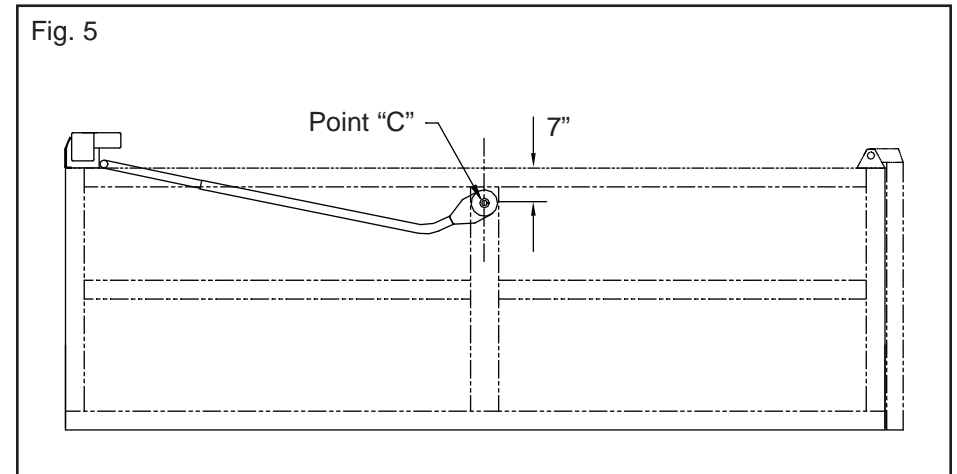
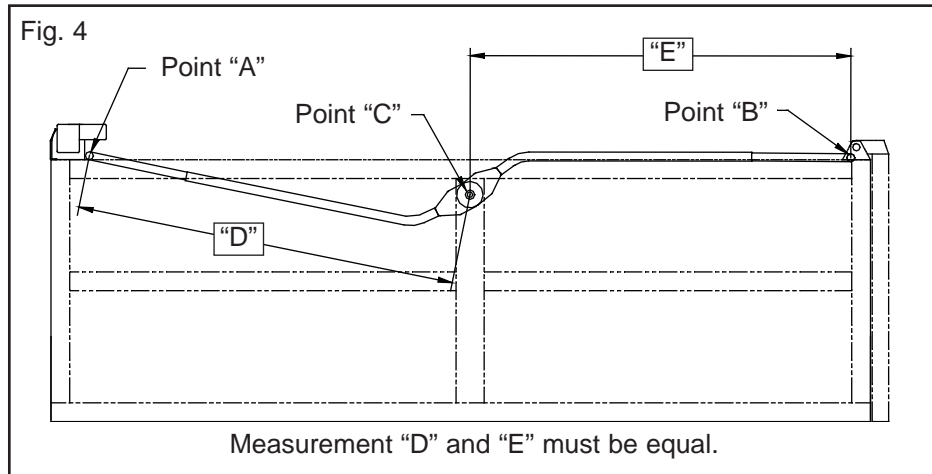
Weld system mounting bar to truck as shown in Fig. 3.

Fig. 3



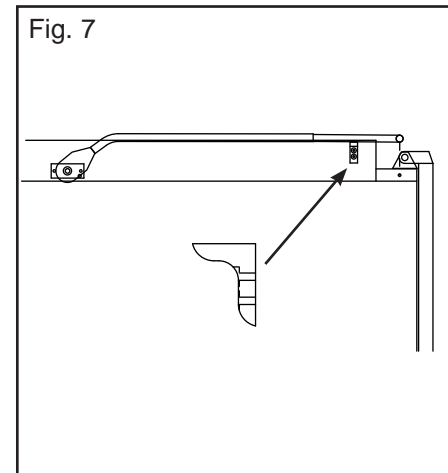
Step 3. Determining the Pivot Points and Mounting Locations on each side

Careful measurements must be taken to insure that the arm and pivot assemblies are mounted square and parallel to the truck or trailer body. Locate the proper mounting positions by determining Point "A" and Point "B" and insuring measurement "D" and "E" are equal (Fig. 4). The pivot "C" should be 1/2 way between Point "A" and Point "B" and 7" below the top rail on both sides (Fig. 5).



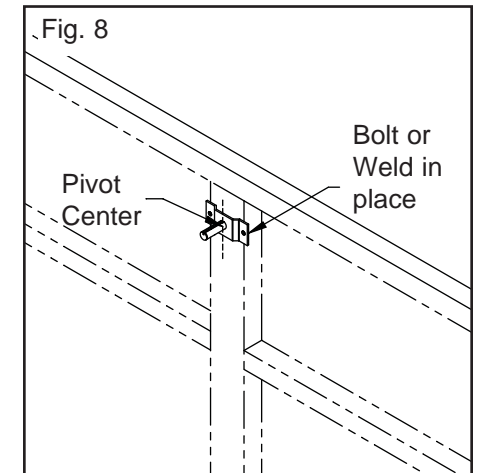
Step 4. Arm Preload

Arm must be indexed with no load at 24 degrees to top rail for proper preload of springs (Fig. 6). Mark pivot pin location on box.



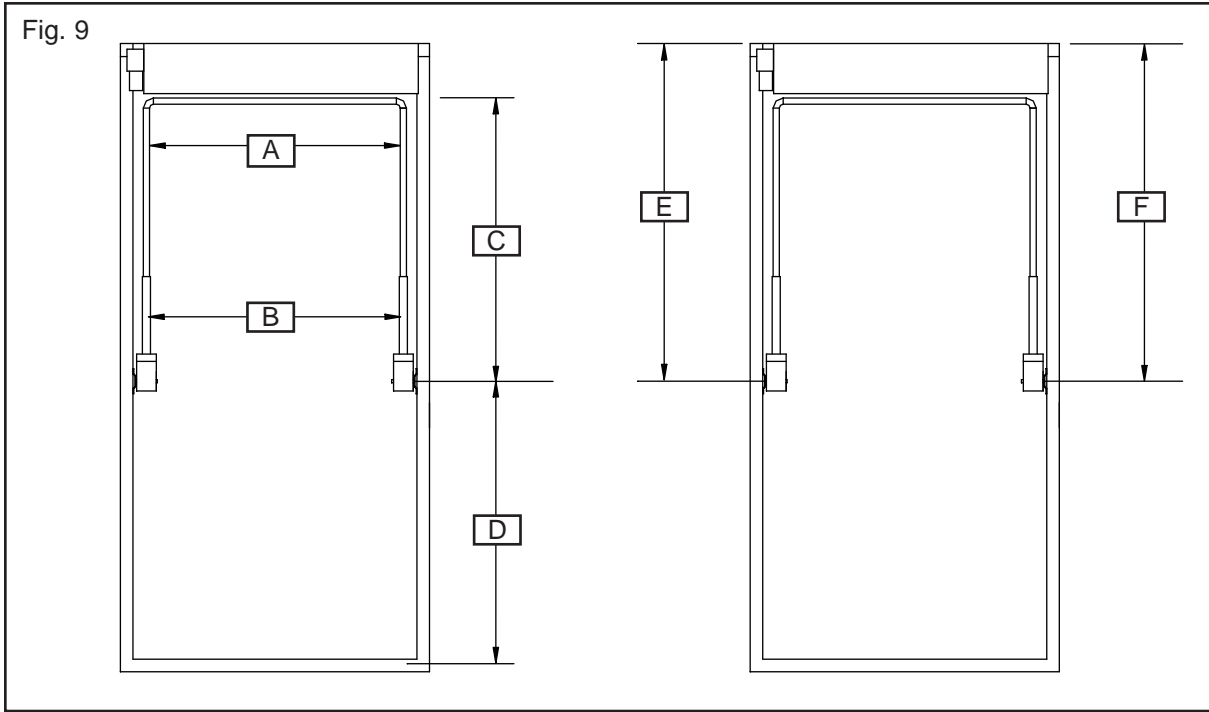
Step 5. Arm Stop

Install Arm Stop (Part # 501-9940) as shown in Fig. 7.



Step 6. Mounting the Pivot

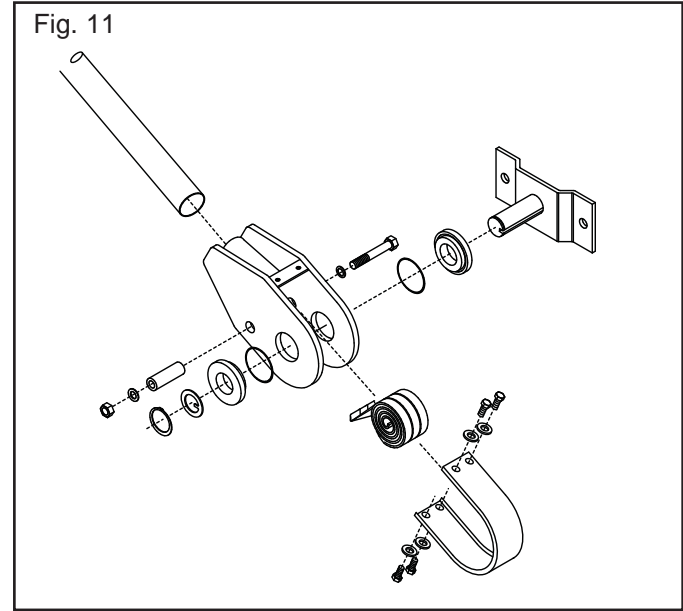
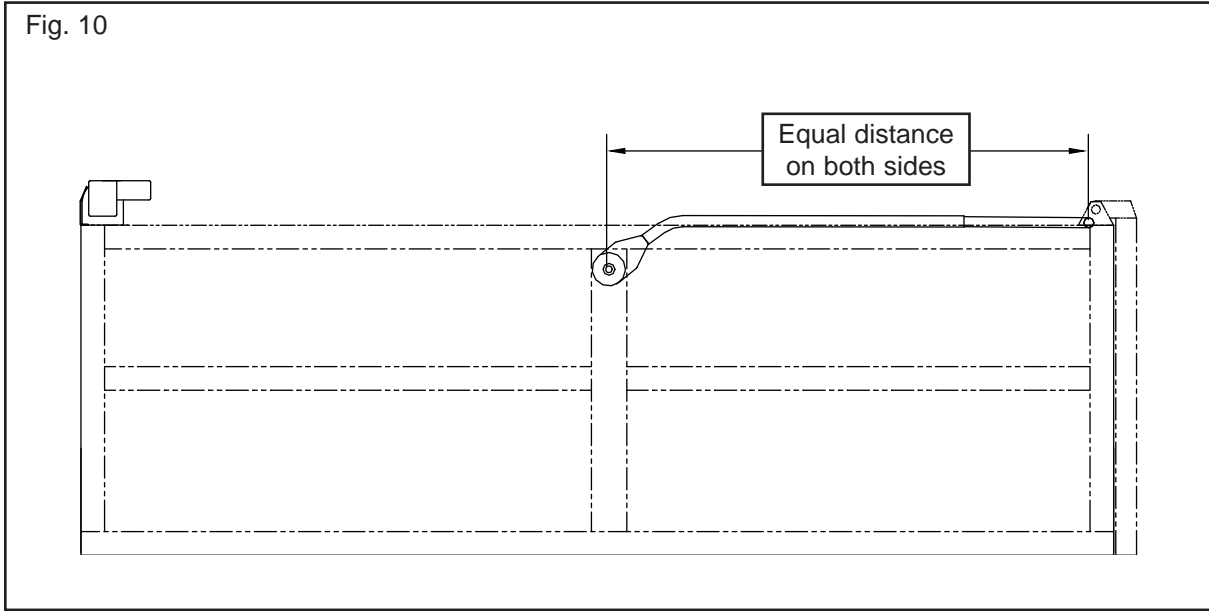
Locate the Pivot pin with the notch facing up and bolt or weld in place.



Step 7. Correct Alignment of arm to truck.
 Arms and pivots must be square and parallel to truck or trailer body (Fig. 9 & 10).

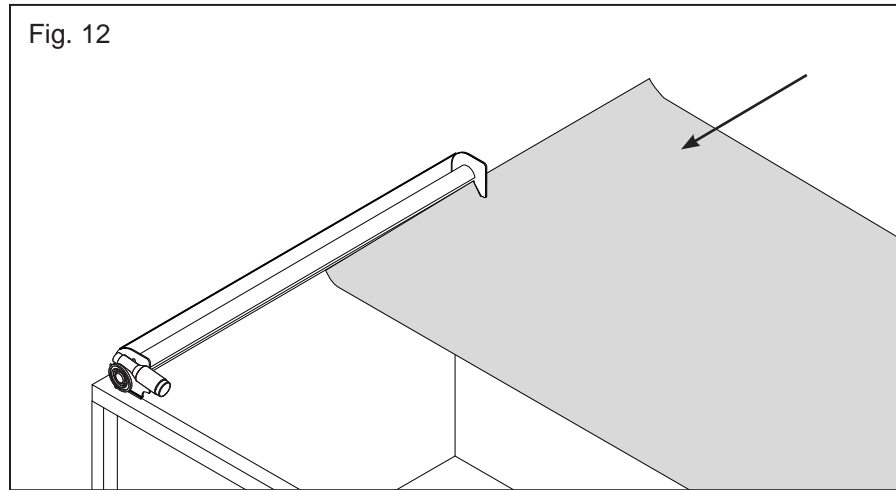
Dimension "A" must equal "B"
 Dimension "C" must equal "D"
 Dimension "E" must equal "F"

Step 8. Pivot and Spring Assembly
 Assemble the springs and pivot assembly as shown in Fig. 11. Make sure arms move freely after assembly.



Step 9. Tarp Installation

Slide Tarp into Groove on roller tube and center as shown in Fig. 12.



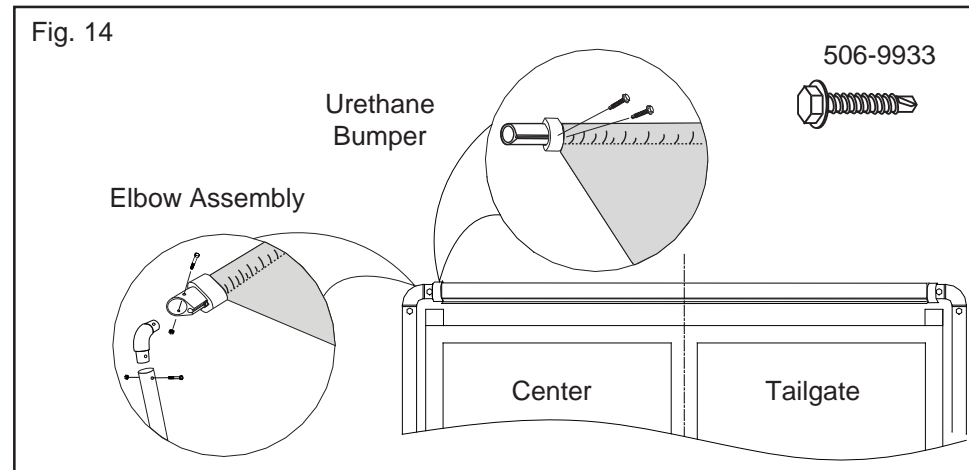
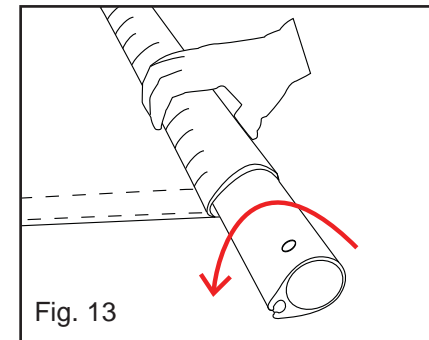
Step 9. Installing the Pullbar

Cut the pull bar to length making sure the arms remain parallel and square to the body.

Slide the tarp into groove in the pull bar and center the tarp.

Roll the tarp up on the pull bar two revolutions. (Fig. 13)

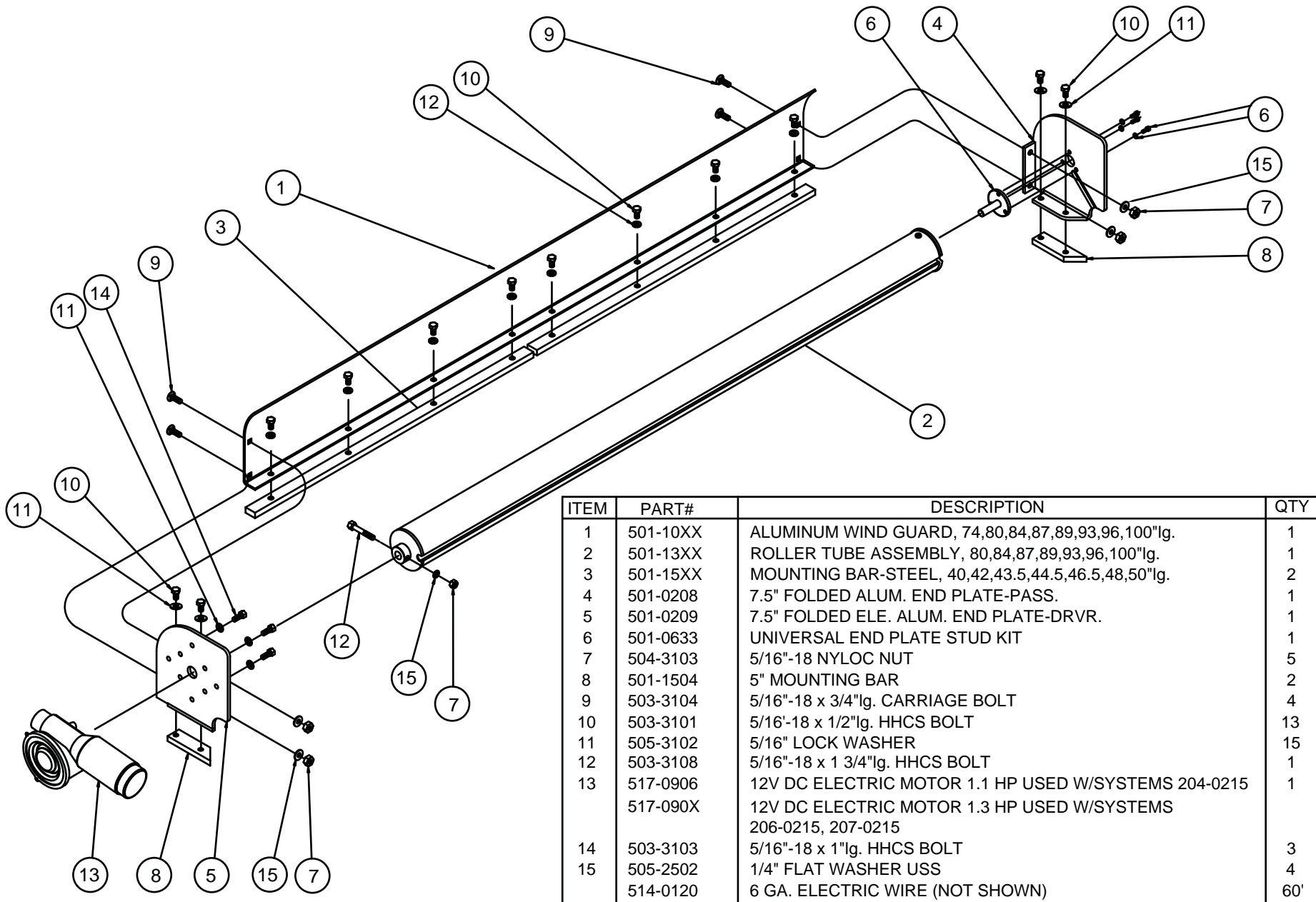
Fasten the tarp in place by sliding the two urethane bumpers on to the pull bar far enough to touch the edges of the tarp. Lock in place by installing a 1 1/2" long (506-9933) self drilling screw through the bumper and into the hem tube groove of the pull bar. (Fig. 14)



Note: Tarp must be retracted when dumping.

7" ALUMINUM ELECTRIC ARM SYSTEM

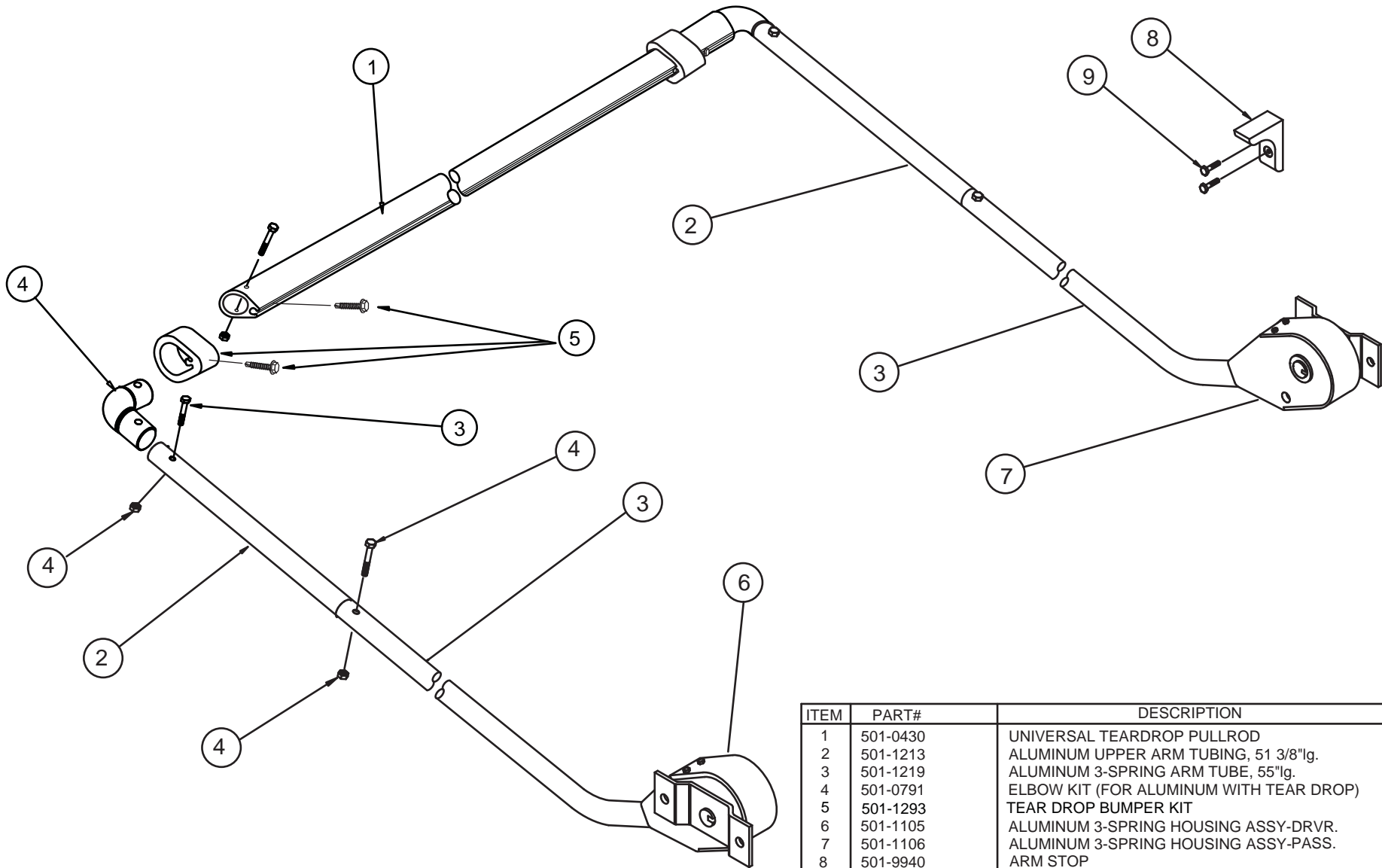
(#204-0215, 206-0215, 207-0215)



ITEM	PART#	DESCRIPTION	QTY
1	501-10XX	ALUMINUM WIND GUARD, 74,80,84,87,89,93,96,100"lg.	1
2	501-13XX	ROLLER TUBE ASSEMBLY, 80,84,87,89,93,96,100"lg.	1
3	501-15XX	MOUNTING BAR-STEEL, 40,42,43.5,44.5,46.5,48,50"lg.	2
4	501-0208	7.5" FOLDED ALUM. END PLATE-PASS.	1
5	501-0209	7.5" FOLDED ELE. ALUM. END PLATE-DRVR.	1
6	501-0633	UNIVERSAL END PLATE STUD KIT	1
7	504-3103	5/16"-18 NYLOC NUT	5
8	501-1504	5" MOUNTING BAR	2
9	503-3104	5/16"-18 x 3/4"lg. CARRIAGE BOLT	4
10	503-3101	5/16"-18 x 1/2"lg. HHCS BOLT	13
11	505-3102	5/16" LOCK WASHER	15
12	503-3108	5/16"-18 x 1 3/4"lg. HHCS BOLT	1
13	517-0906	12V DC ELECTRIC MOTOR 1.1 HP USED W/SYSTEMS 204-0215	1
	517-090X	12V DC ELECTRIC MOTOR 1.3 HP USED W/SYSTEMS 206-0215, 207-0215	
14	503-3103	5/16"-18 x 1"lg. HHCS BOLT	3
15	505-2502	1/4" FLAT WASHER USS	4
	514-0120	6 GA. ELECTRIC WIRE (NOT SHOWN)	60'

REV: 11/13/07 BAB

REAR TRANSFER INSIDE ARM SYSTEM (#501-0780)

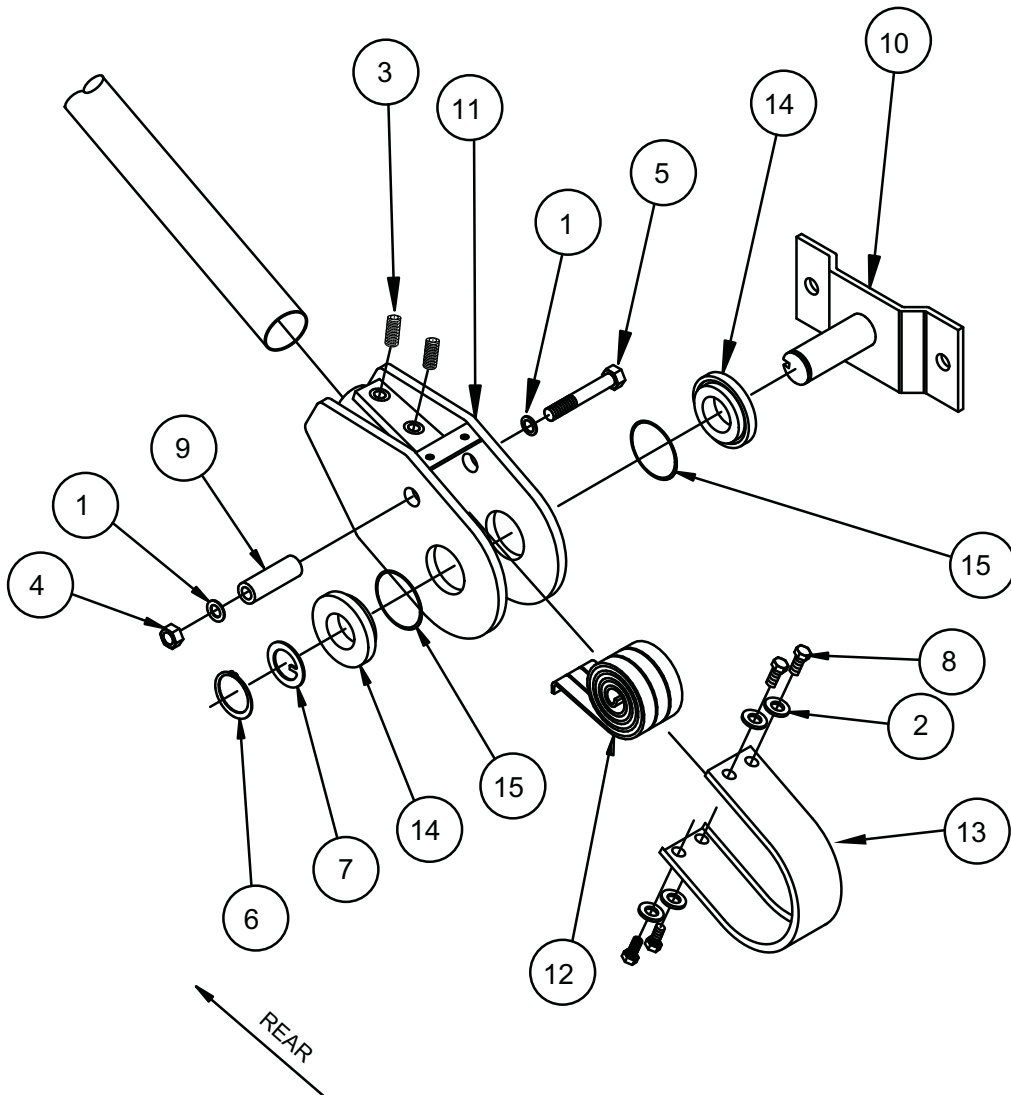


ITEM	PART#	DESCRIPTION	QTY
1	501-0430	UNIVERSAL TEARDROP PULLROD	1
2	501-1213	ALUMINUM UPPER ARM TUBING, 51 3/8"lg.	2
3	501-1219	ALUMINUM 3-SPRING ARM TUBE, 55"lg.	2
4	501-0791	ELBOW KIT (FOR ALUMINUM WITH TEAR DROP)	2
5	501-1293	TEAR DROP BUMPER KIT	1
6	501-1105	ALUMINUM 3-SPRING HOUSING ASSY-DRVR.	1
7	501-1106	ALUMINUM 3-SPRING HOUSING ASSY-PASS.	1
8	501-9940	ARM STOP	2
9	506-3705	3/8"-16 x 2" SELF TAPPING SCREW	4

NB REV: 03/11/10

INSIDE TRANSFER/ HIGH MOUNT 3-SPRING HOUSING ASSEMBLY

(#501-1105 DRVR.) SHOWN
(#501-1106 PASS.) OPPOSITE



ITEM	PART#	DESCRIPTION	QTY
1	505-5001	1/2" AN FLAT WASHER	2
2	505-2502	1/4" FLAT WASHER USS	4
3	506-5008	1/2"-13 X 3/4" SET SCREW	2
4	504-5004	1/2"-13 NYLOC NUT	1
5	503-5011	1/2"-13 x 3 1/4"lg. HHCS BOLT	1
6	506-0101	1 1/4" SNAP RING	1
7	505-9904	WASHER, W/TANG 1 7/8"	1
8	503-2503	1/4"-20 x 1/2"lg. HHCS BOLT	4
9	501-1158	SPRING CONNECTION-ARM SYSTEM	1
10	501-1123	PIVOT ASSEMBLY INSIDE TRAN.	1
11	501-1109	SPRING SIDE PLATE ASSEMBLY	1
12	517-9921	SMALL SPRING FOR ARM SYSTEM	3
13	501-1151	ARM DUST COVER	1
14	501-1155	UHMW PIVOT RETAINER 2 1/2" DIA.	2
15	506-9902	O-RING 2" I.D. x 3/32" thk.	2

NB REV. 05/19/10