

Setting Transmitter Code

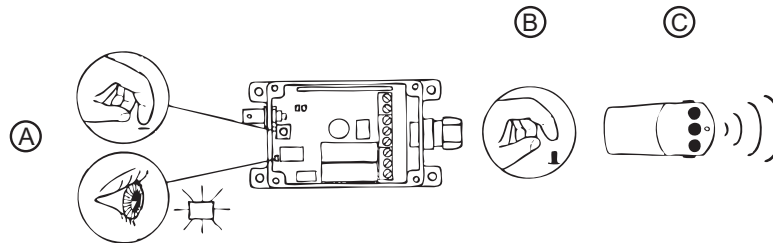
607-0131



1404 N. Marshall Ave, El Cajon, CA 92020
For Technical Assistance
Call Toll 1-800-368-3075
www.pulltarps.com

Setting the transmitter's ID code:

1. Remove the receiver cover (4 screws).



2. Press and hold the receiver's self-instruction button for 2 to 4 seconds (do not hold longer than 4 seconds)(A). The red light should flash slowly. Release the button (B)
3. Press the transmitter's button #1. The red LED flashes 3 times. Then release the #1 button on the transmitter. The transmitter's ID code for button #1 is now programmed.
4. Press and hold the receiver's self-instruction button for 4 to 6 seconds (do not hold longer than 6 seconds)(A). The red light should flash quickly. Release the button (B)
5. Press the transmitter's button #3. The red LED flashes 3 times. Then release the #3 button on the transmitter. The transmitter's ID code for button #3 is now programmed. The red LED will continue to double flash. This indicates that button #1 and button #3 are programmed.
6. Check that the transmitter's code is stored by pressing the transmitter's function buttons and registering whether the selected relay is activated. The green LED lights when the receiver receives the signal. When one or more transmitters are stored, the red LED flashes continuously (double flashes).

Using More Than One Transmitter:

To program a second transmitter to work with the same receiver repeat steps 2 - 5 with the second transmitter.

Stop Instruction:

Stop instruction of the transmitter by pressing and holding the receiver's button for 6 - 8 seconds (function D in the table).

Delete All Stored Transmitters:

Delete all the stored transmitters' ID codes by pressing and holding the receiver's button for more than 8 seconds (until the LED goes out).

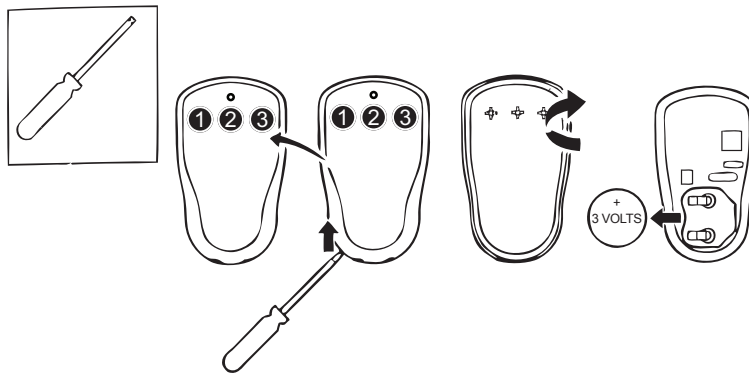
Transmitter Information:

| | |
|----------------------|------------------|
| Protection: | IP 65 |
| Climatic Conditions: | -20°C till +55°C |
| Humidity: | 10-90% |

Radio Transmission:

Transmission continues during the time each function button is held down and is interrupted when the button is released. The red LED flashes while the button is pressed.

Battery Replacement:



Function Table

| | Function | Red LED | The receiver's button is pressed and held* | Instruct the transmitter with button no. |
|-----------------|--|------------------|--|--|
| | A The transmitter's button 1 activates relay 1 and button 2 activates relay 2 | Continuously lit | 0.3 - 2 sec. | Button 1 or button 2 |
| See Steps 2 & 3 | B Button #1 on the transmitter activates relay 1 | Flashes slowly | 2 - 4 sec. | Select button #1 |
| See Steps 4 & 5 | C Button #3 on the transmitter activates relay 2 | Flashes quickly | 4 - 6 sec. | Select button #3 |
| | D Stopping instruction | Continuously lit | 6 - 8 sec. | - |

* During the time the receiver's button is pressed, the red LED changes to indicate the current function mode of the programming step.