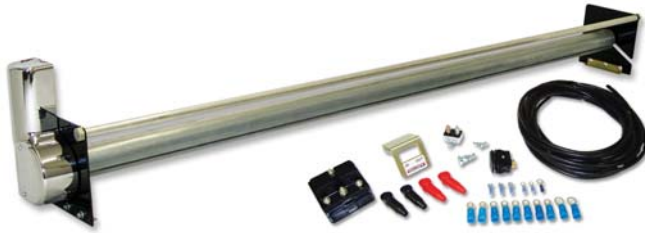


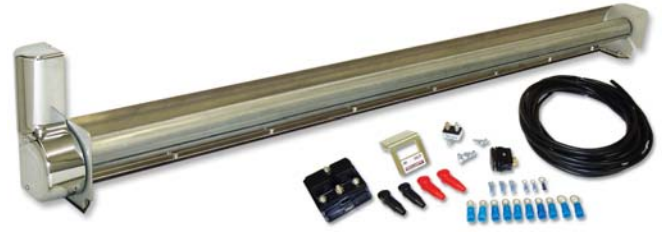
Electric Housing Choices

Stock Housing Widths 80", 84", 87", 89", 93", 96", & 100"



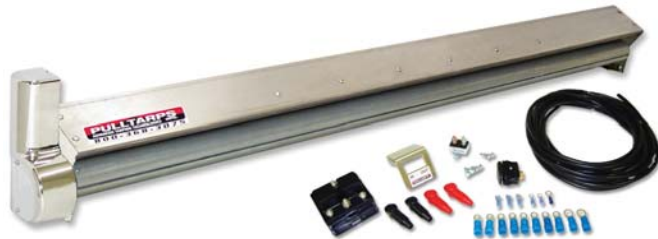
9" Open (Part # 201-0215)

Basic system great for applications where loader damage and falling debris is not a concern. Holds up to 40' of tarp.



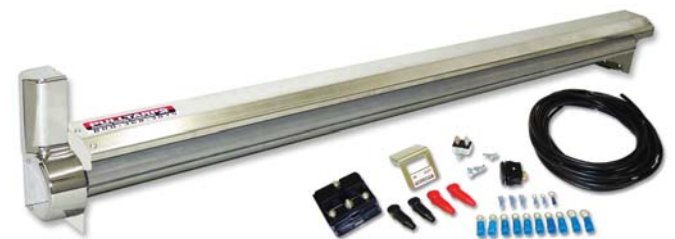
7" Aluminum (Part # 204-0215; 1.3 hp 206-0215)

Lightweight system where falling debris is not a concern. Wind Guard is included. Holds up to 22' of tarp.



Steel Protector (Part # 208-0215; 1.3 hp 224-0215)

Galvanized steel housing that offers good protection against loader damage, falling debris and wind. Holds up to 22' of tarp.



Protector Plus (Part # 217-0215; 1.3 hp 226-0215)

A higher capacity galvanized system for applications that require some protection from falling debris. For applications up to 30'.



X-Pando (Part # 218-3017)

Extremely strong and durable one size fits all system. Fits body widths from 78" to 102". Holds up to 30' of tarp.



9.5" Universal Super Shield

(Part # 210-0215; 1.3 hp 216-0215)

Strongest, most durable Automatic Arm System available in the industry. Fully welded 12 gauge steel. Holds up to 40' of tarp.

Automatic Arm Kits

All Automatic Arm sets come standard with Pulltarps New Double Wrap Teardrop Technology.



4 Spring Steel Arm Kit w/ Bent Upper Arms... Part # 501-0749

4 Spring Steel Arm Kit..... Part # 501-0782

Steel - Four Spring Arm Kit

- Lower spring assembly powder coated silver
- Steel Upper Arms
- Telescoping arms for easy length adjustment.
- Interchangeable with other brands of tarping systems
- Available with 4" off-set.

These arms will save you money. They are made of common fence pipe that is inexpensive and easy to replace. Can handle applications up to 22' in length.