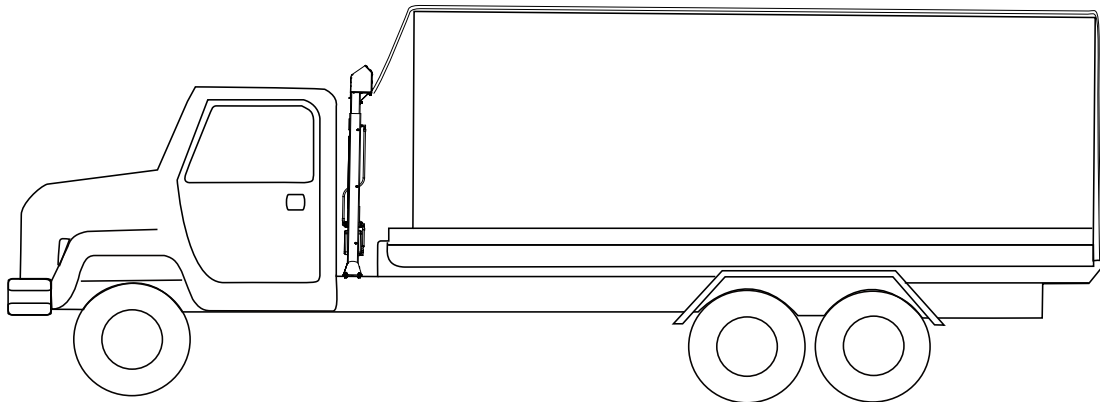
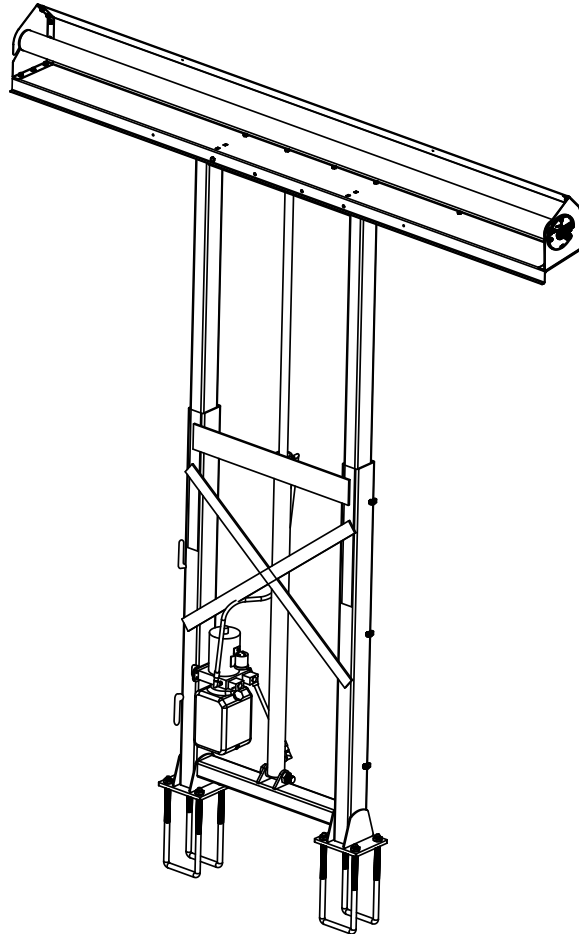


Pulltarps Tower

with Pull out Tarp 513-0074 / 513-0076

With Tray 513-0068



1404 N. Marshall Ave. El Cajon CA. 92020
For technical support call us at (800) 368-3075 607-0115
www.pulltarps.com

RH 08/15/13

Pulltarps Tower Installation Instructions

1. Use an overhead crane to position the tower assembly on the chassis.

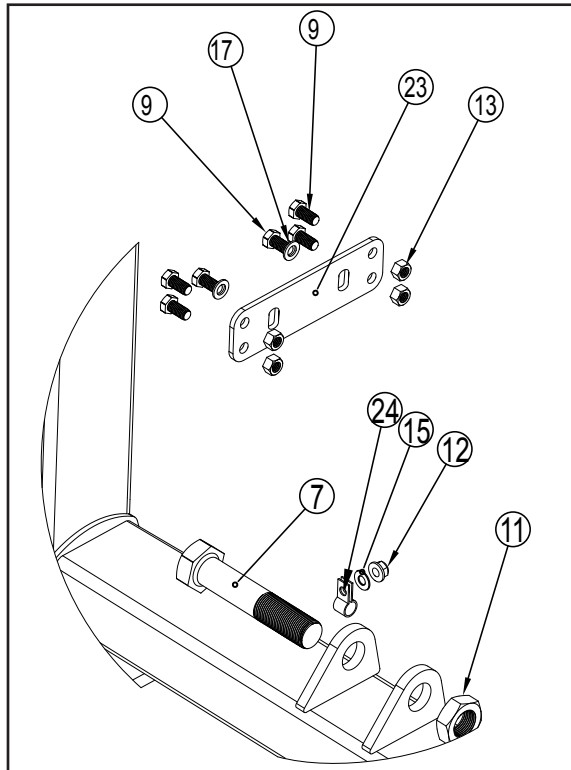
Note: The base assembly (#20) can be separated from the stage 1 extension (#21), to reduce the weight if an overhead crane is not available. Slide the stage 1 extension (#21) upward out of the base assembly (#20)

Position the base assembly (#20) on top of the frame rails and at least 3" behind the cab. Vehicles with tilt frames require a minimum of 6" clearance between the cab and the tilt frame.

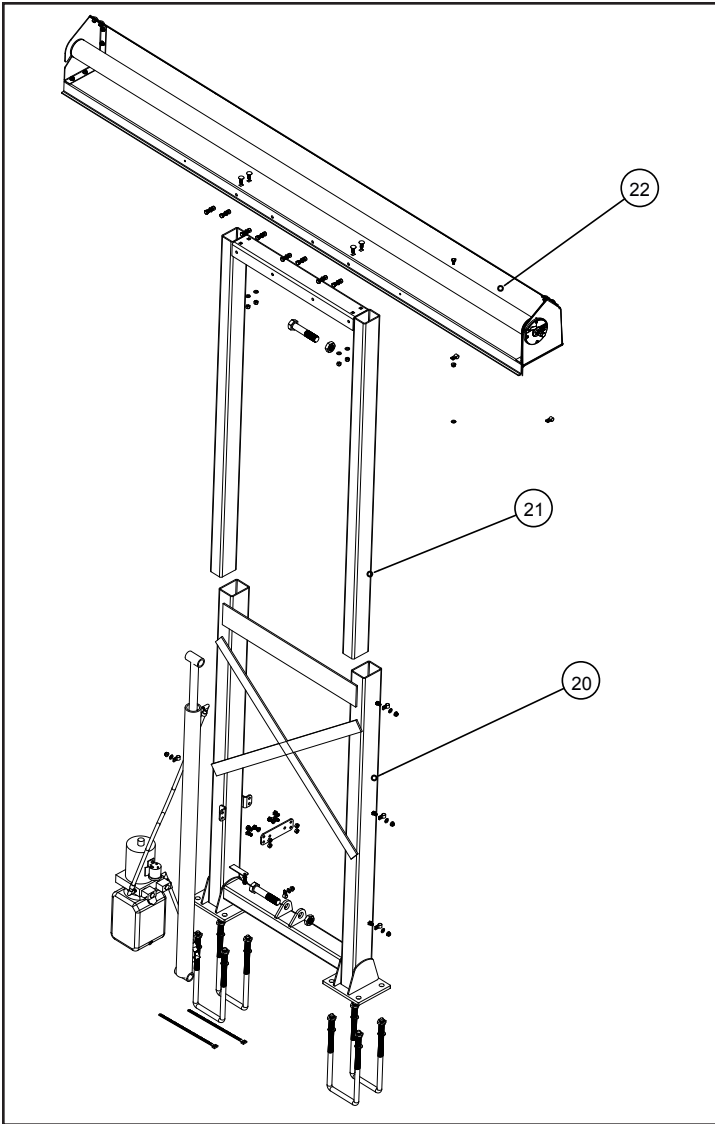
Secure the base assembly in place. Generic "U" bolts, nuts, and washers are provided in the kit. Some fabrication may be required for your vehicle.

Reassemble base assembly (#20), stage 1 extension (#21).

2. Install the hydraulic cylinder into the tower assembly using the two 1" diameter bolts.(#7, #11)

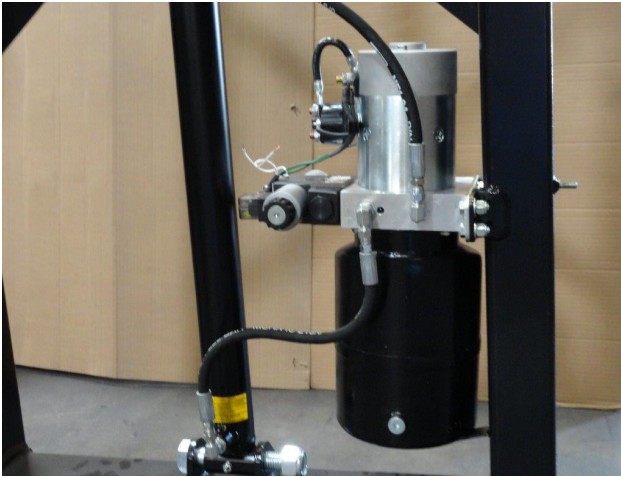


3. Attach the pump mount plate to the hydraulic power unit.

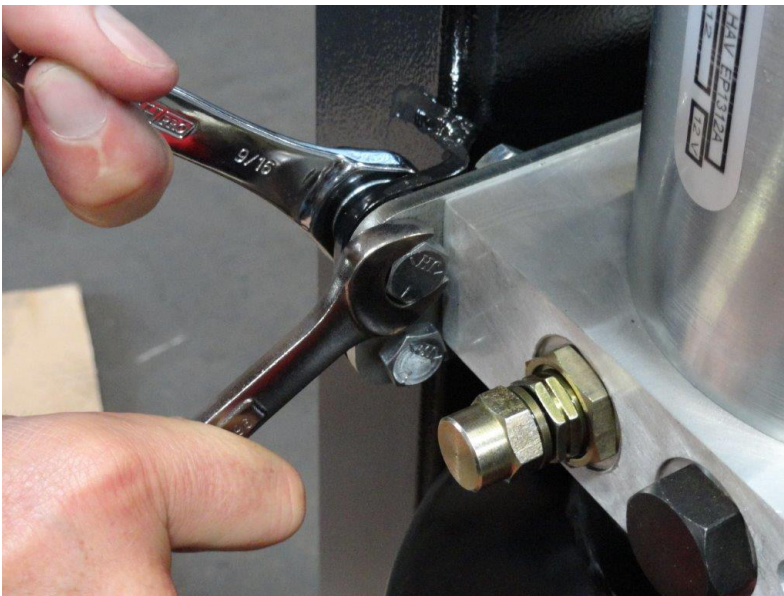


4. Attach the hydraulic power unit assembly to the single stage base assembly by bolting the pump mount plate to the base assembly.

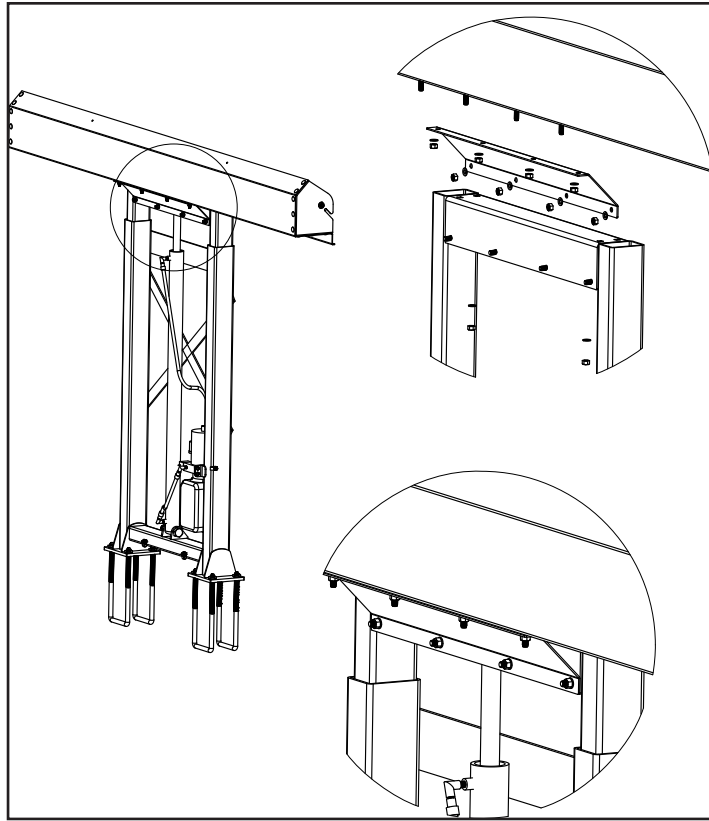




6. Attach the hoses to the pump unit and then the cylinder as pictured. The short (lower hose) connects to port "A". The long (upper hose) connects to port "B".



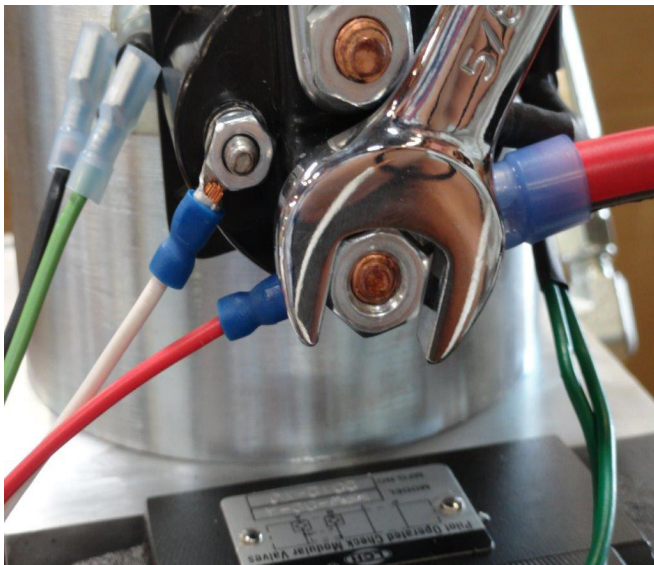
7. Fill pump reservoir with Dextron ATF or 32 Grade Hydraulic oil(not supplied) to the base of the filler cap.



Mounting the housing

8. Bolt the tower housing brace, (#4) to the stage 1 extension using the 3/8" x 1" bolts, flat washer & 3/8" nyloc nuts.

9. Bolt tower housing to top of tower per the attached drawing using the 3/8" x 1" bolts, flat washers & 3/8" nyloc nuts.

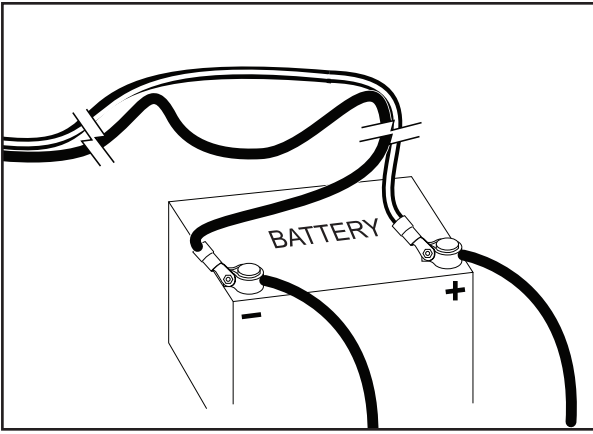


Connecting the power and switch

10. Connect the red/black or orange/black 6 gauge wire and the 10 gauge red wire from the switch box to the solenoid terminal as shown.

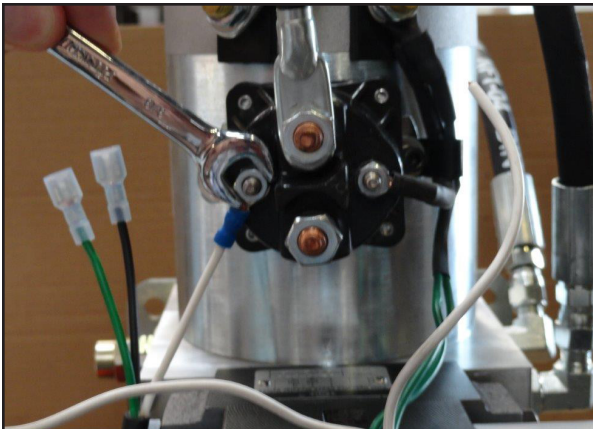


11. Connect the Black 6 gauge wire to the ground terminal on the motor.

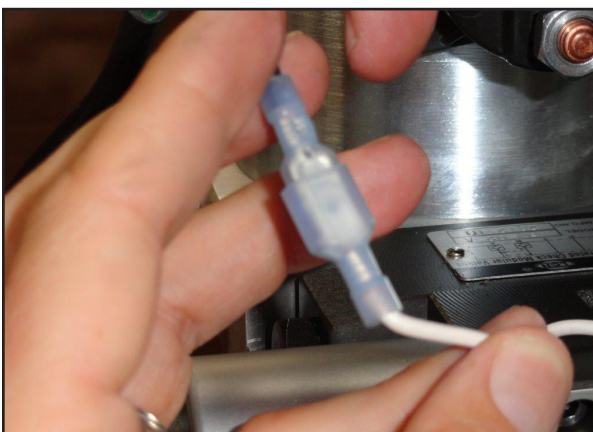


12. Connect the 3/8 loop on the 6 gauge Red/Black or Orange/Black to the positive (+) battery post.

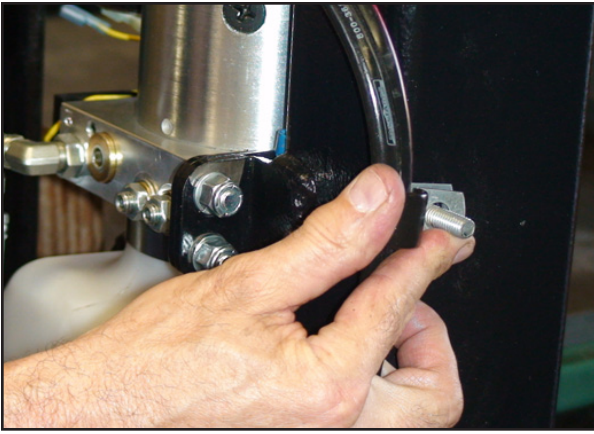
13. Connect large terminal end to the negative (-) battery post. See illustration.



14. Connect the white wire with the small loop connector from the switch box to the solenoid as shown.

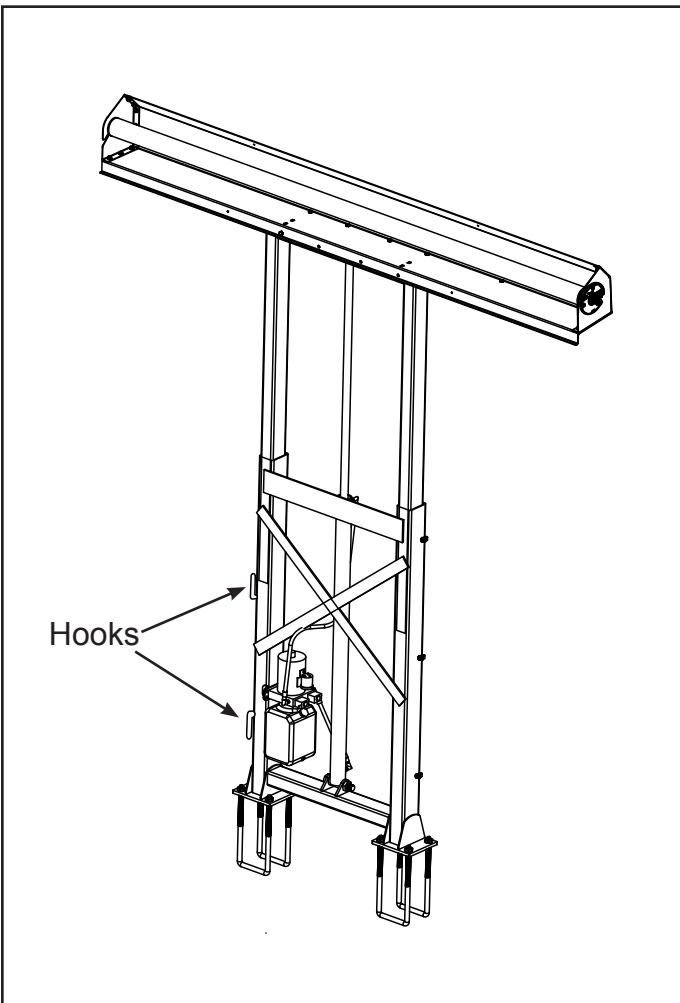


15. Crimp one spade connector to each of the wires on the control valves as shown. Connect to the green and black wire from the switch box.



16. Attach wires to the tower base unit using the clamp and nut provided. See photo. Locate switch box in a convenient area near the tower.

Note: Make sure that all hoses and wires are secured and away from moving parts and pinch points. Use the clamps and wire ties provided.



17. Cycle the tower up and down completely a few times to purge all the air out of the system.
Note: Make sure the fluid level in the pump reservoir does not go below half way when the towers is fully extended.

18. Weld the rope storage hooks to the side of the single stage assembly as shown. The pull rope will be wrapped around these hooks and secured with the bungee that is attached when it is not in use.

Step 21. Optional Flap Tarp, Rope and Hook Installation

Parts: Tie Down Hooks (Steel or Alum.) 

Pull Down Hook 



The Location Of The Tie Down Hooks Is Critical!

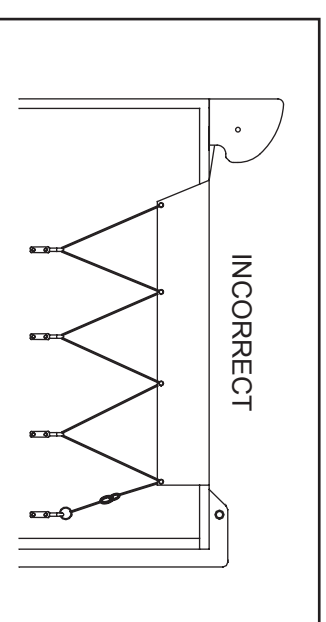
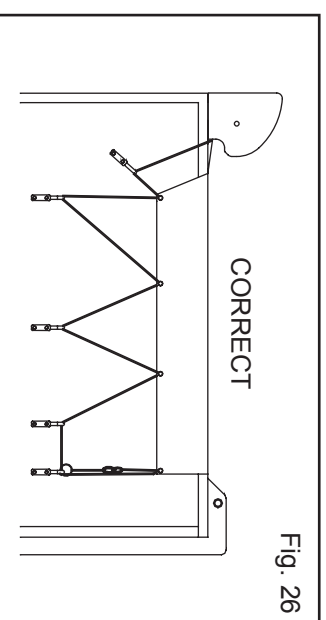
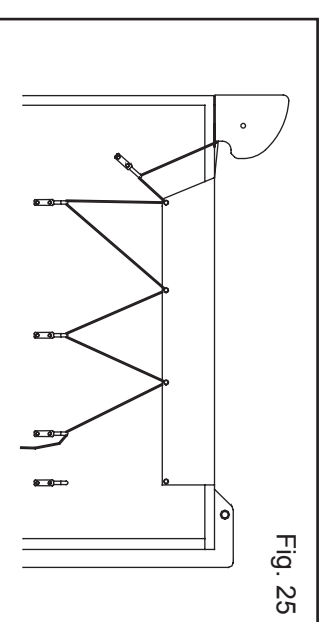
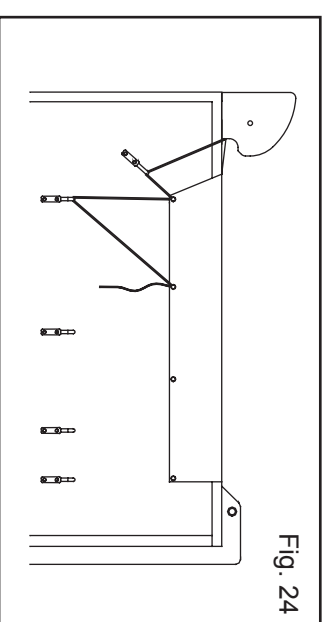
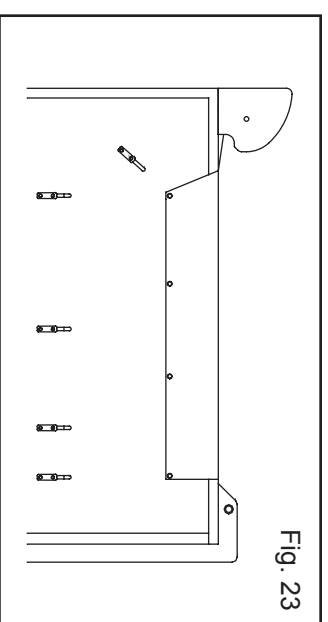
Flip the braided rope over the corner so that the flaps and tie down ropes hang over each side of the box. The number of tie down hooks vary depending on the length of your tarp. One pull down hook is included with your Pultarp system. If needed. Use the hook to pull the braided rope and flap over the side of the box.

The tie down hooks must be positioned so that:

- The tie down rope can be reached from the ground.
- The bungee cord has to be stretched to reach the last hook (see step 9).
- The rope has no slack.
- The tie down hooks are level with one another.

To ensure proper hook placement, first duct tape the rope to the box in place of the tie down hooks. Start with hook closest to the cab.

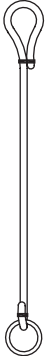


- Position the first hook 6" (15.24cm) down and 12" (30.48cm) forward (toward the cab) from the first grommet (Fig.23).
- Position 2nd hook straight down from 1st grommet. This hook should be reached from ground (Fig.24).
- Place middle hooks equal distances from grommet (Fig.25). These hooks should be placed at the same height as the second hook.
- Position last hook (closest to the tailgate) below the last grommet at the same height as the others (Fig.26).
- Weld hooks in place.



Step 22: Bungee Cord Installation

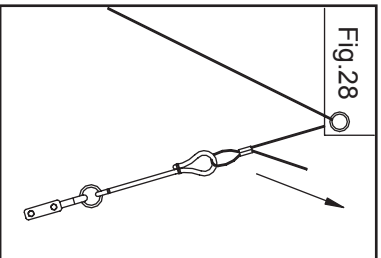
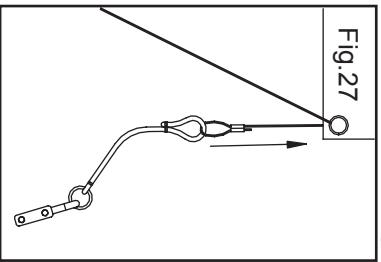
After side hooks are installed, the tie down rope must be installed and cut to proper length. It is important to get all of the slack out of the rope to prevent blowing and rubbing of flaps in windy conditions.

Parts:

- 2 Bungee Cords, 
- 2 Oval Compression sleeves, 
- 1 Snap Clip 

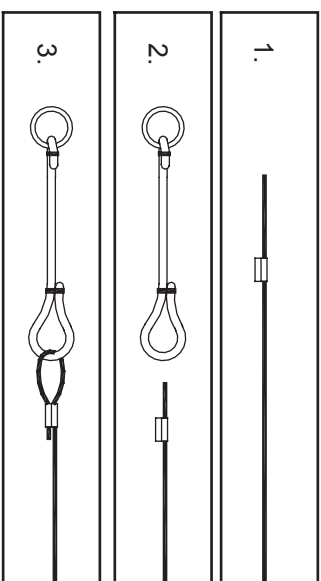
Tarps with Tie Downs

To tighten, pull loose end of rope through the Oval Compression Sleeve (Fig:27). Stretch the bungee cord making sure all slack is taken out of the rope, crimp compression sleeve (Fig:28).



Connect Bungee Cord to Rope

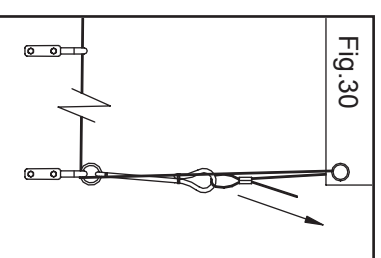
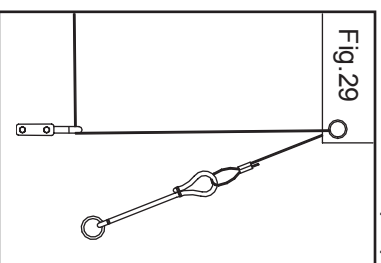
1. Thread braided rope through Oval Compression Sleeve.
2. Feed rope through the eye of the bungee cord.
3. Thread the rope back through the oval compression sleeve. Adjust for proper length. Crimp compression sleeve.



Tarps with Side Flaps

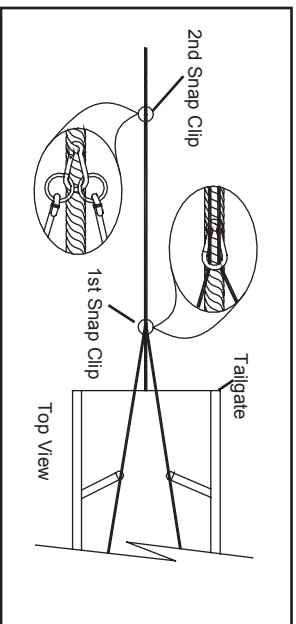
To tighten, pull loose end of rope through the Oval Compression Sleeve (Fig:29). Stretch the bungee cord making sure all slack is taken out of the rope, crimp compression sleeve (Fig:30).

Note: Check for proper placement of rope through the last two hooks.



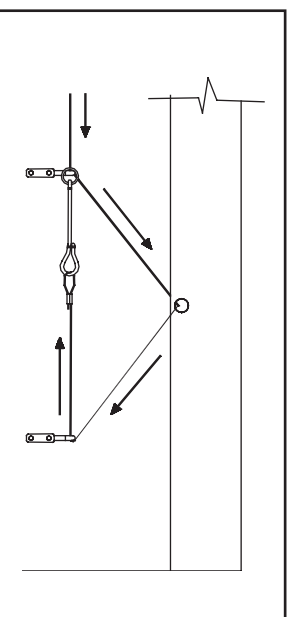
Snap Clip Installation

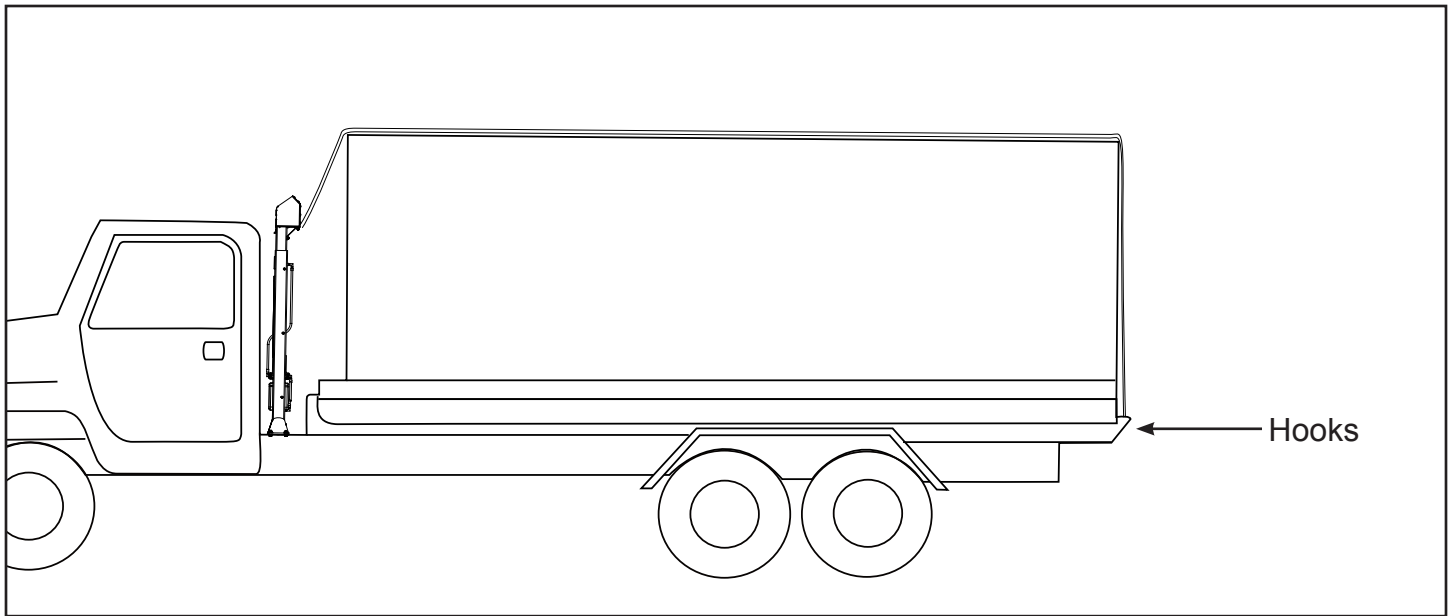
Flip the rope back on top of the tarp, making sure to hold the bungee at all times. The first snap clip is factory installed 5'-6" from the pulldown. Open the clip and enclose the rope. Weave the second clip through the main pulldown where the ends of the bungee cords meet the main pulldown. Make sure the rope is taught when clipped. **NOTE: First snap clip should not be used on long wheel base belly dumps.**



Excess Rope

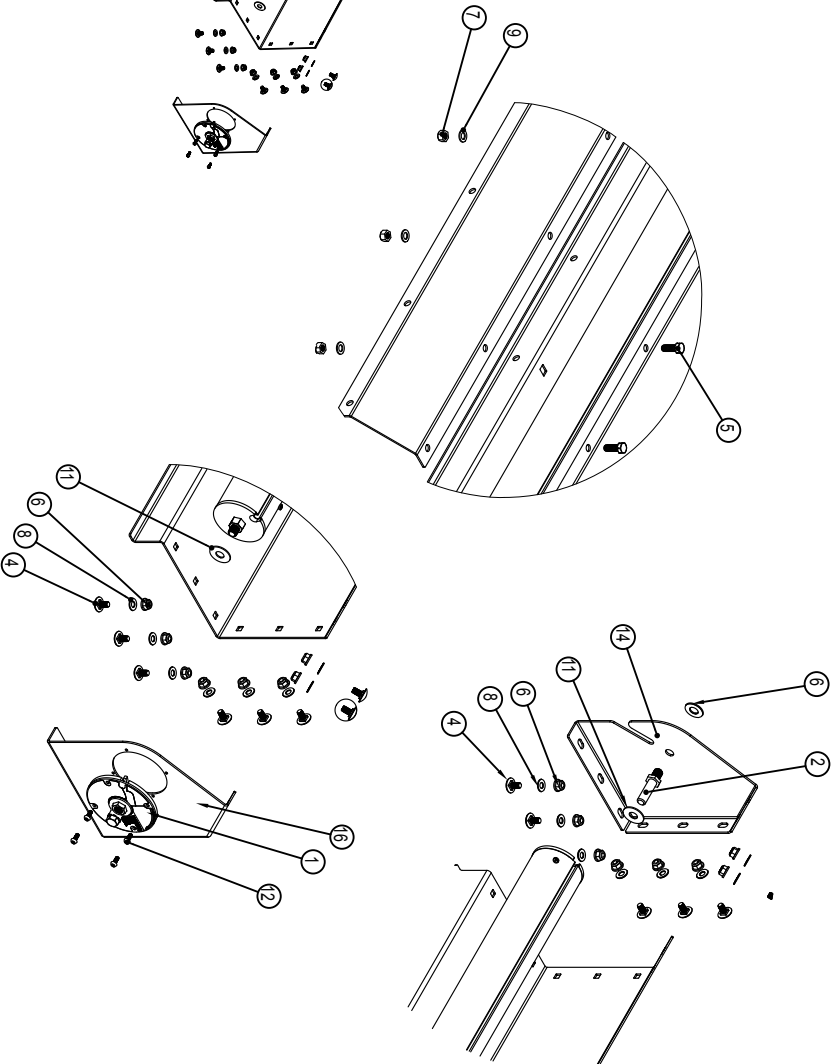
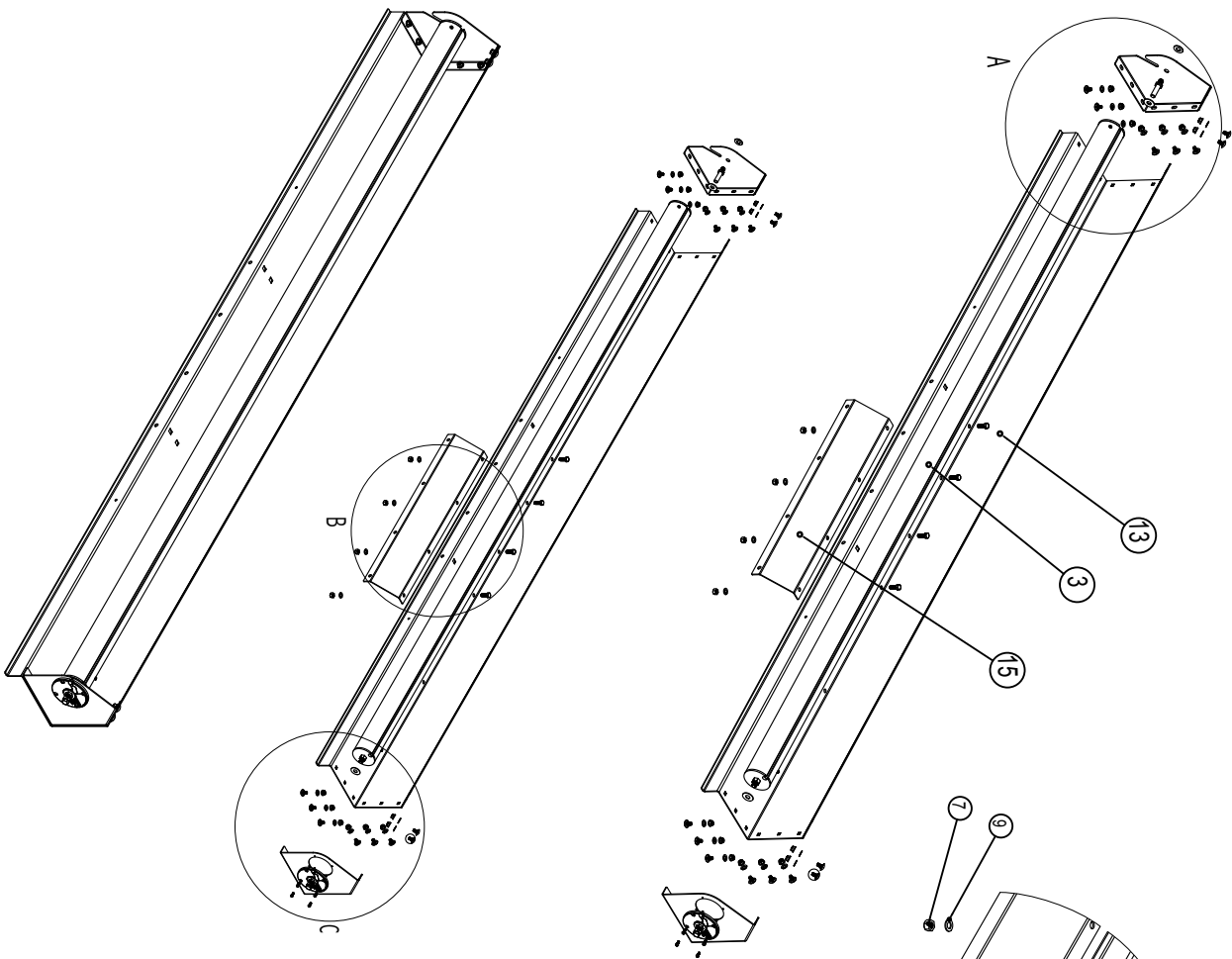
You may need extra rope to keep the side flap system ground operated. If your application requires extra rope, the slack needs to be taken up by attaching the end of the bungee cord to an alternate hook. (pictured below)





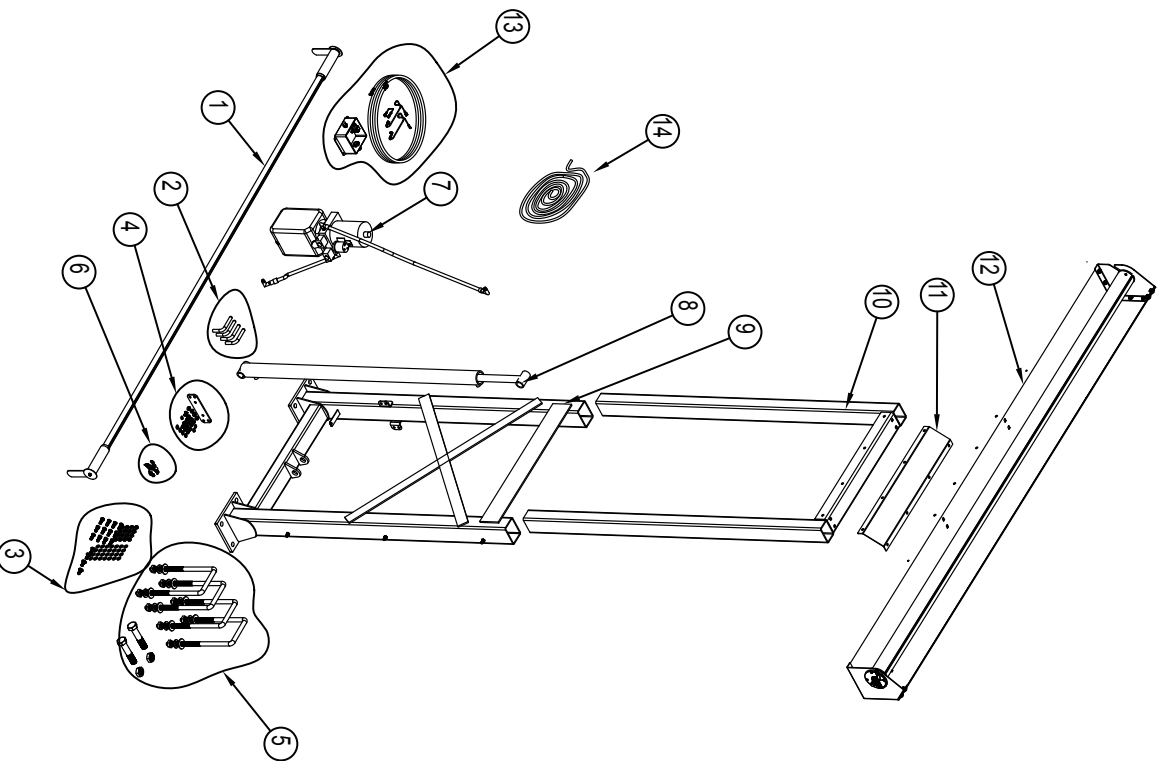
23. Weld a pair of rope storage hooks to the rear of the tilt frame. One hook should be in the center and one off to one side. The pull rope will be wrapped around these hooks for storage and secured with the bungee that is attached when the tarp is pulled out.

513-0073 Tower Housing



ITEM NO.	PART NUMBER	DESCRIPTION	QTY.
1	501-0647	SYSTEM END PLATE RATCHET ASSEMBLY	1
2	501-0801	SYSTEM END PLATE STUD 2.4"	1
3	501-1369	102" ROLLER ASSY. FOR PULLTAP SYS	1
4	503-3118	5/16-18 x 5/8" CARRIAGE BOLT	16
5	503-3704	3/8"-16 X 1" HHID BOLT	4
6	504-3102	5/16-18 JAM NYLOC NUT	16
7	504-3702	NUT 3/8-16 HEX NUT NYLOC ZINC PLT	4
8	505-2502	1/4" USS WASHER 5/16" HOLE	16
9	505-3702	WASHER 3/8" SAE FLAT ZINC	4
10	505-5001	1/2" AN FLAT WASHER	1
11	505-5002	Nylon Washer .51 ID x 1.25 OD x .063 thick	2
12	506-9905	10-32 X 1/2" PHILLIPS PAN HEAD SCREW	4
13	513-0061	TOWER HOUSING 102"	1
14	513-0062	TOWER HOUSING END PLATE	1
15	513-0064	TOWER HOUSING BRACE 30"	1
16	513-0072	TOWER ELECT END PLATE	1

513-0074 Tower Assembly



ITEM NO.	PART NUMBER	DESCRIPTION	QTY.
1	501-0419	PULL ROD 105" W/HARDWARE	1
2	501-0621	STEEL ROPE HOOK KIT	1
3	501-0662	TOWER HOUSING HARDWARE KIT	1
4	501-0663	PUMP HARDWARE KIT	1
5	501-0664	U BOLT / CYLINDER HARDWARE KIT	1
6	501-0665	SWITCH BOX HARDWARE BAG	1
7	501-2312	SINGLE VALVE POWER PACK	1
8	501-2311	2" BORE X 48" LONG HYDRAULIC CYLINDER	1
9	513-0015	SINGLE STAGE BASE ASSY	1
10	513-0016	STAGE 1 EXTENSION	1
11	513-0064	TOWER HOUSING BRACE 30"	1
12	513-0073	102" TOWER PULLTARPS HOUSING	1
13	514-9988	TOWER SWITCH BOX	1
14	517-1009	PULL ROPE 50'	1

Note: For 24V application Only
 513-0076 Item #7 uses Part# 501-2314
 Item #13 uses Part# 514-9997