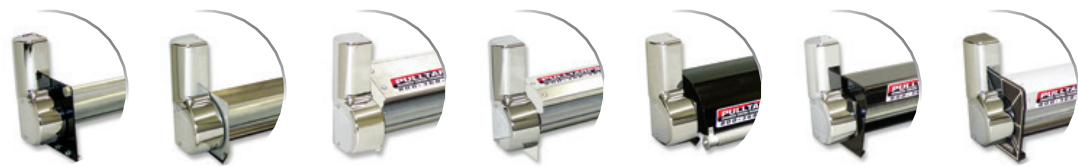


• DETAILS OF AUTOMATIC ARMS •

• DETAILS MAKE THE DIFFERENCE •

Full Line of Tarp Housings



Roller Tube

Easily remove or install any tarp. Tarp slides in and out of the groove on the roller tube.

Electric Motor Drive

The reliable Superwinch® Motor Drive is covered by a 3 year prorated manufacturer's warranty. Can be operated by wireless remote control, in-cab switch, or external switch.

Upgradeable

Systems can be ordered with an extra heavy duty Superwinch® electric motor. Part # 517-09XX

Grommets
Come standard on all tarps.

Under Body Pivots

Available for applications up to 30'. UHMW bearings for smooth operation so the arms operate evenly. Mounted under the body out of harms way. Part # 501-2110 (Shown)

Steel Four Spring Pivots

Great for applications up to 22'. These pivots are powder coated silver for a great appearance. Part # 501-1103 (Shown)

Aluminum Four Spring Pivots

Great for aluminum applications up to 22'. These pivots are light weight and pivot on UHMW bushings for smooth long lasting operation. Part # 501-1107 (Shown)

Single Spring Pivots

Designed for applications up to 40'. The pivots are fully enclosed and pivot on UHMW bushings for smooth and long lasting operation. Part # 501-1101 (Shown)

Inside the Box Pivots

Designed for Rear Transfer and High Mount Boxes. The pivots are fully enclosed and pivot on UHMW bushings. Powerful enough to deploy even when covered with some material. Part # 501-1106 (Shown)

Universal Tear Drop Pull Bar System

Part # 501-0430

Urethane Bumpers

Protect the body and reduce noise. Easy to install and can be retrofitted to existing systems. Part # 517-0116

Side Flaps

Vinyl Side Flaps are available for all tarps. See page 47.

Standard Arm Tubing

Arms are made of common fence pipe or aluminum tubing. This allows for easy and inexpensive repairs in the field. Part # 501-12XX

Optional Arm Catchers

A small lip in the Arm Catcher holds the arms in place. This stops the arms from bouncing while in transit and further reduces noise. Part # 501-1247