



INSTALLATION INSTRUCTIONS

SuperShield™ 9500M w/EDU Conversion Kit

111-0215 / Conversion Kits 501-0732, 501-0734 & 501-0735

Related Instructions,
How-To Videos & More



PDF: 25 AMP Switch Kit



PDF: Bolt-On Mounting System



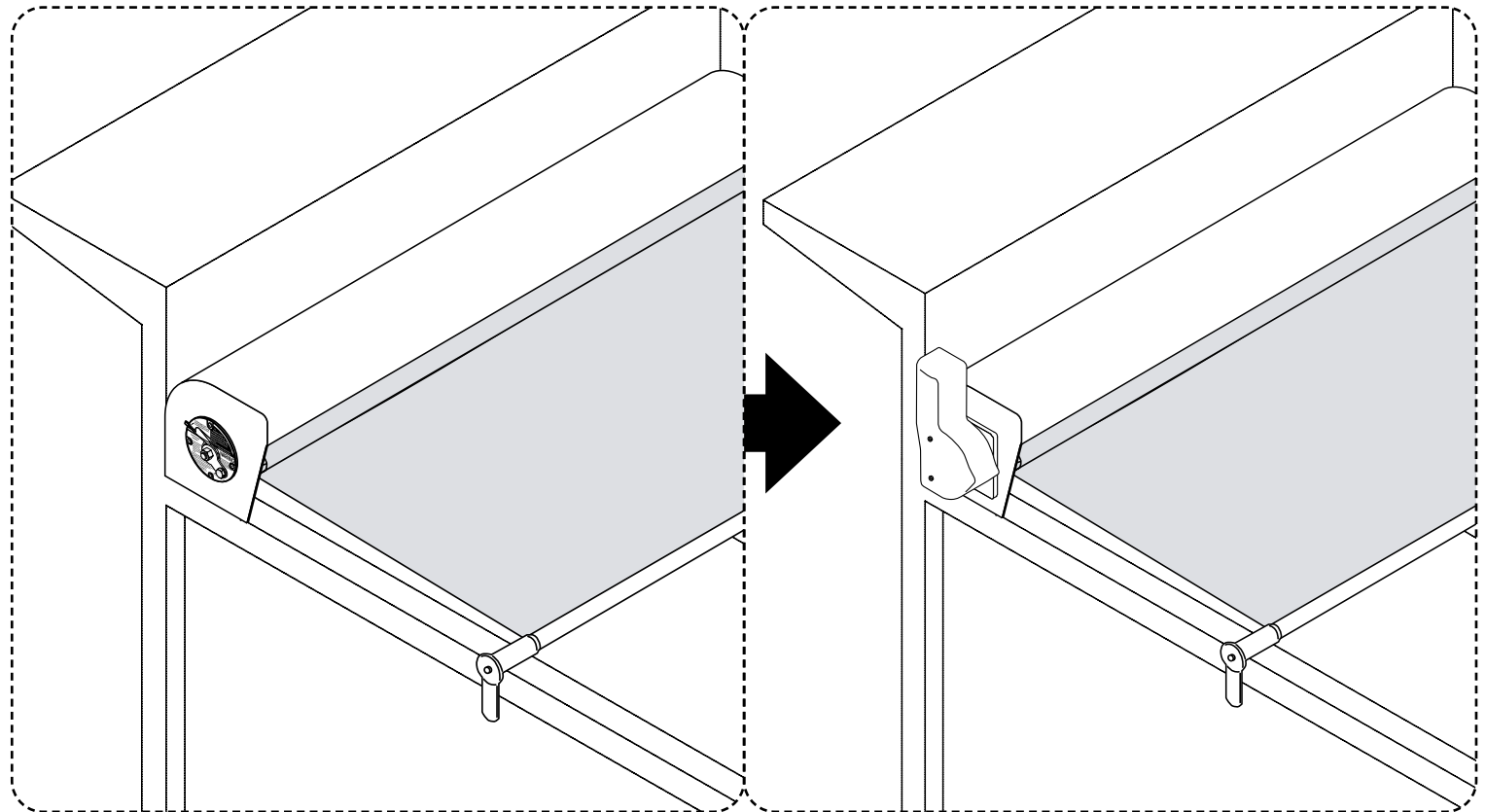
PDF: Smart Switch Basic Kit



PDF: High Amp Switch Kit



Video: Ratchet Lock Operation



Document #: 607-0137
Revised: 05/04/22 WLH

DURING INSTALLATION, SOME FABRICATION MAY BE REQUIRED.



A Safe Fleet Brand



INSTALLATION INSTRUCTIONS

SuperShield™ 9500M w/EDU Conversion Kit

Table of Contents

Tools, Diagrams & Parts	Electric Drive Conversion Kit Installation
Recommended Tools 2	Releasing Spring Tension from Ratchet (with tarp installed) 7
25 AMP Switch Kit - Wiring Diagram #514-0101..... 3	Removing Roller Tube 8
25 AMP Electric Switch Kit #514-0101..... 4	Roller Tube End Cap Installation..... 9
SuperShield™ 9500M Conversion Kit 5	Roller Tube and Electric Motor Installation..... 10-11
	Tarp Reinstallation 12
	25 AMP Switch Kit / 514-0101 Installation (Link) 13



TOOLS, DIAGRAMS & PARTS



INSTALLATION INSTRUCTIONS

SuperShield™ 9500M w/EDU Conversion Kit

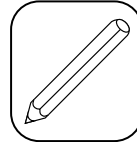
Recommended Tools



Safety Glasses and Gloves



Welding Equipment & Helmet



Pencil or Marker



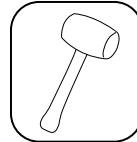
Metal File



Hacksaw



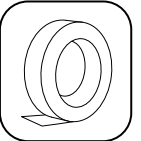
Tape Measure



Rubber Mallet



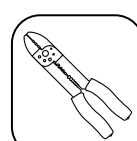
Adjustable Wrench



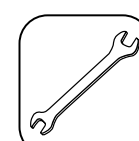
Masking Tape



Flathead Screwdriver



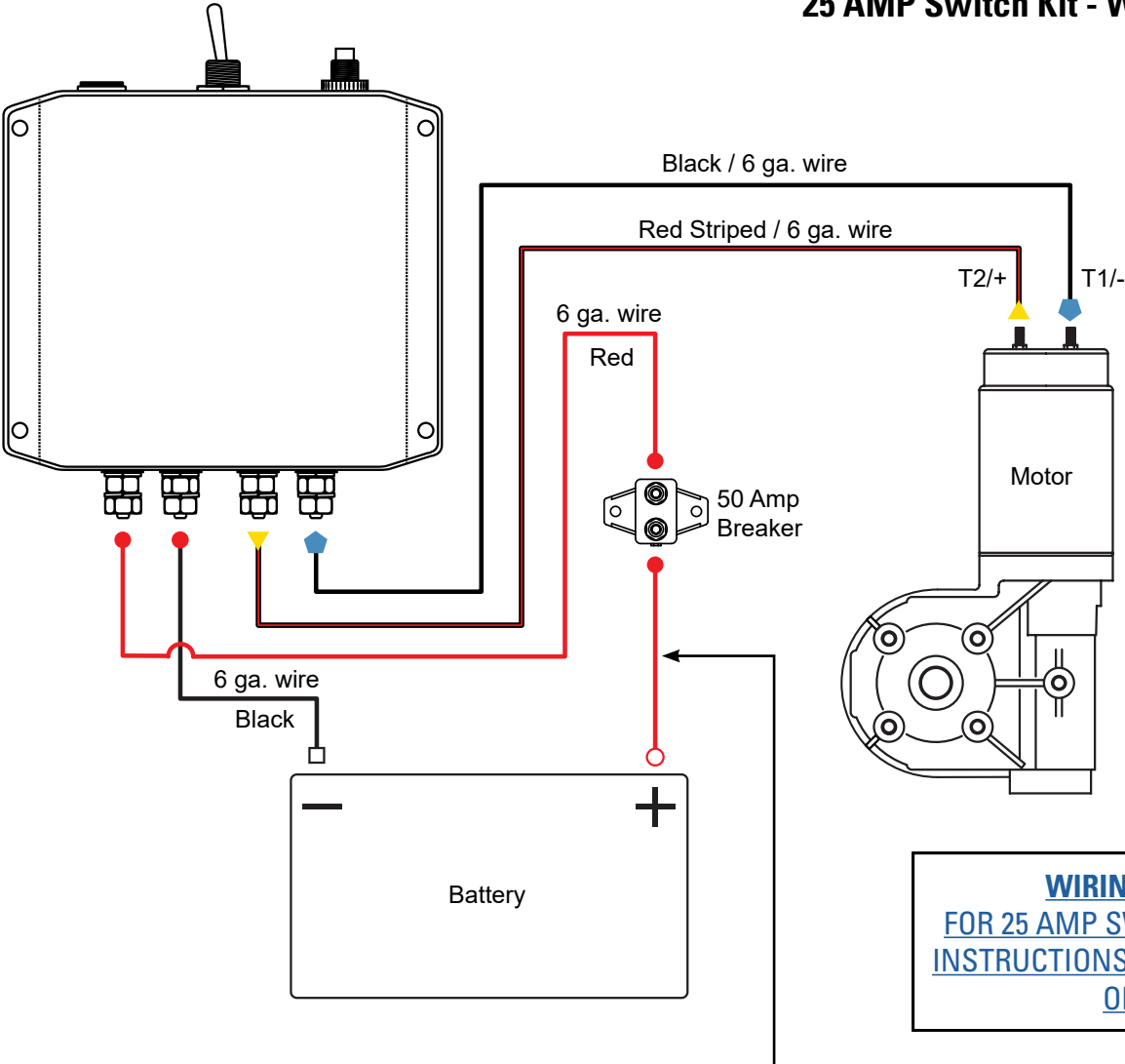
Wire Cutters







5/16" Wrench



25 AMP Switch Kit - Wiring Diagram #514-0101



BOOT COLORS			
	Red	Yellow	Blue
With Boot			
No Boot		N/A	N/A

WIRING INSTRUCTIONS

FOR 25 AMP SWITCH KIT INSTALLATION

INSTRUCTIONS, SEE DOCUMENT 607-0059

OR [CLICK HERE](#)

Note: 12" Max distance between Battery and Breaker.



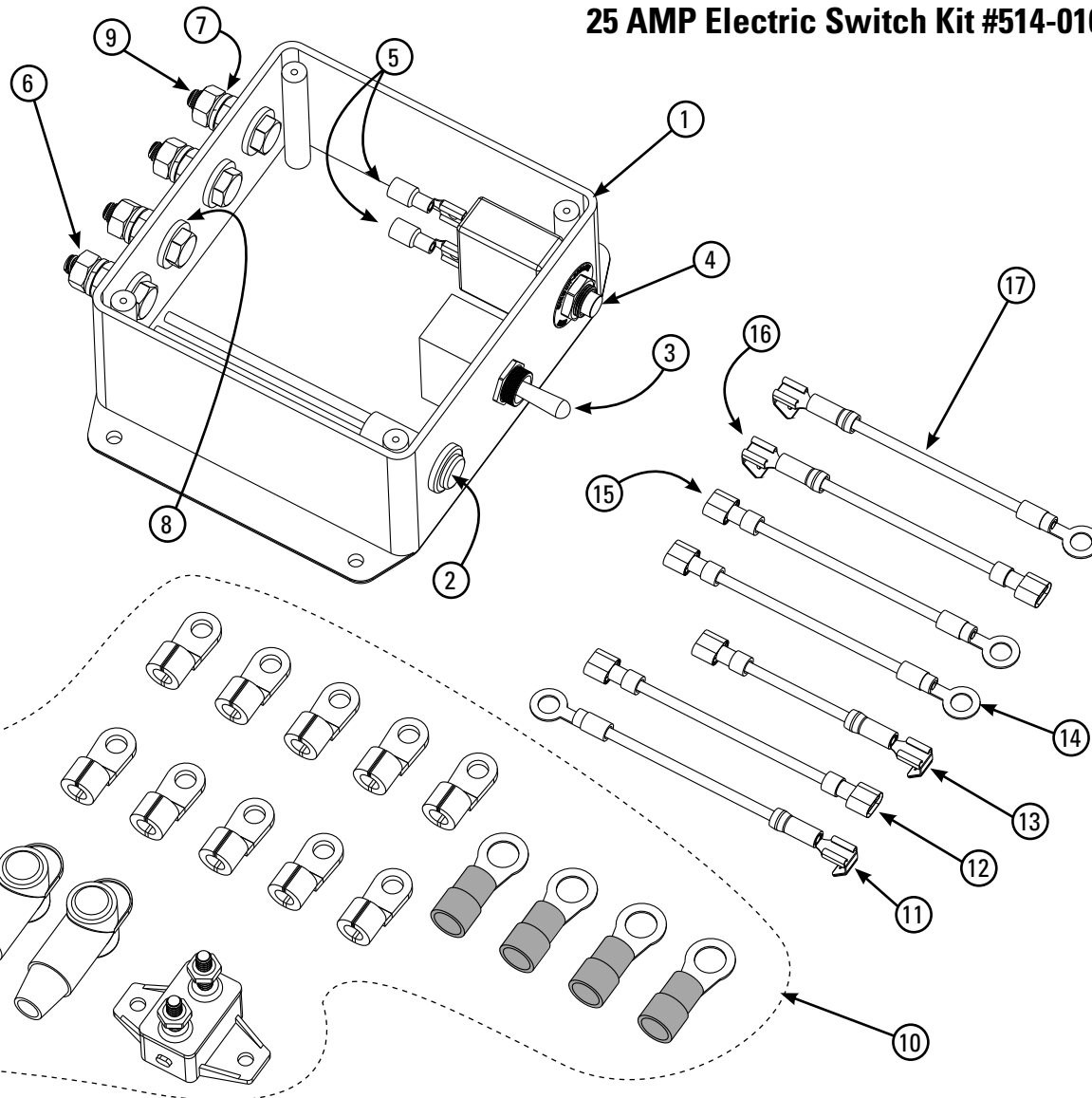
INSTALLATION INSTRUCTIONS

SuperShield™ 9500M w/EDU Conversion Kit

25 AMP Electric Switch Kit #514-0101

ITEM	PART #	DESCRIPTION	QTY
1	514-9991	Enclosure for Electric Pulltarp	1
2	514-9904	Red Lamp - 12V	1
3	514-0102	15A Switch for Electric Pulltarp	1
4	514-0402	25 AMP "Push to Reset" Breaker	1
5	514-0332	Push-OnspadeTerm. 22-18 1/4"	2
6	504-2502	1/4" - 20 Brass Nut	8
7	505-2503	1/4" Lockwasher (Shown in Flattened State)	8
8	505-2501	1/4" Washer	8
9	503-2508	1/4 - 20 x 1 HHCS GR5	4
10	106870	Breaker and Connector Kit	1
11	514-9923	10GA Black Wire Assy., 3" Long Stacked .25" Male Spade, .25 Ring Term	1
12	514-9924	10GA Black Wire Assy., 3" Long .25" Female Spade, Insulated both ends	1
13	514-9928	10GA Black Wire Assy., 2" Long Stacked .25" Male Spade, .25" Female Spade, Insulated	1
14	514-9929	10GA Orange Wire Assy., 3" Long .25" Ring Terminal, .25" Female Spade, Insulated	1
15	514-9959	10GA Red Wire Assy., 3" Long .25" Female Spade, Insulated, .25" Ring Term	1
16	514-9960	10GA Blue Wire Assy., 3" Long Stacked .25" Male Spade, .25" Female Spade, Insulated	1
17	514-9961	10GA Blue Wire Assy., 3" Long Stacked .25" Male Spade, .25" Ring Terminal	1

REV. 10/05/21WLH





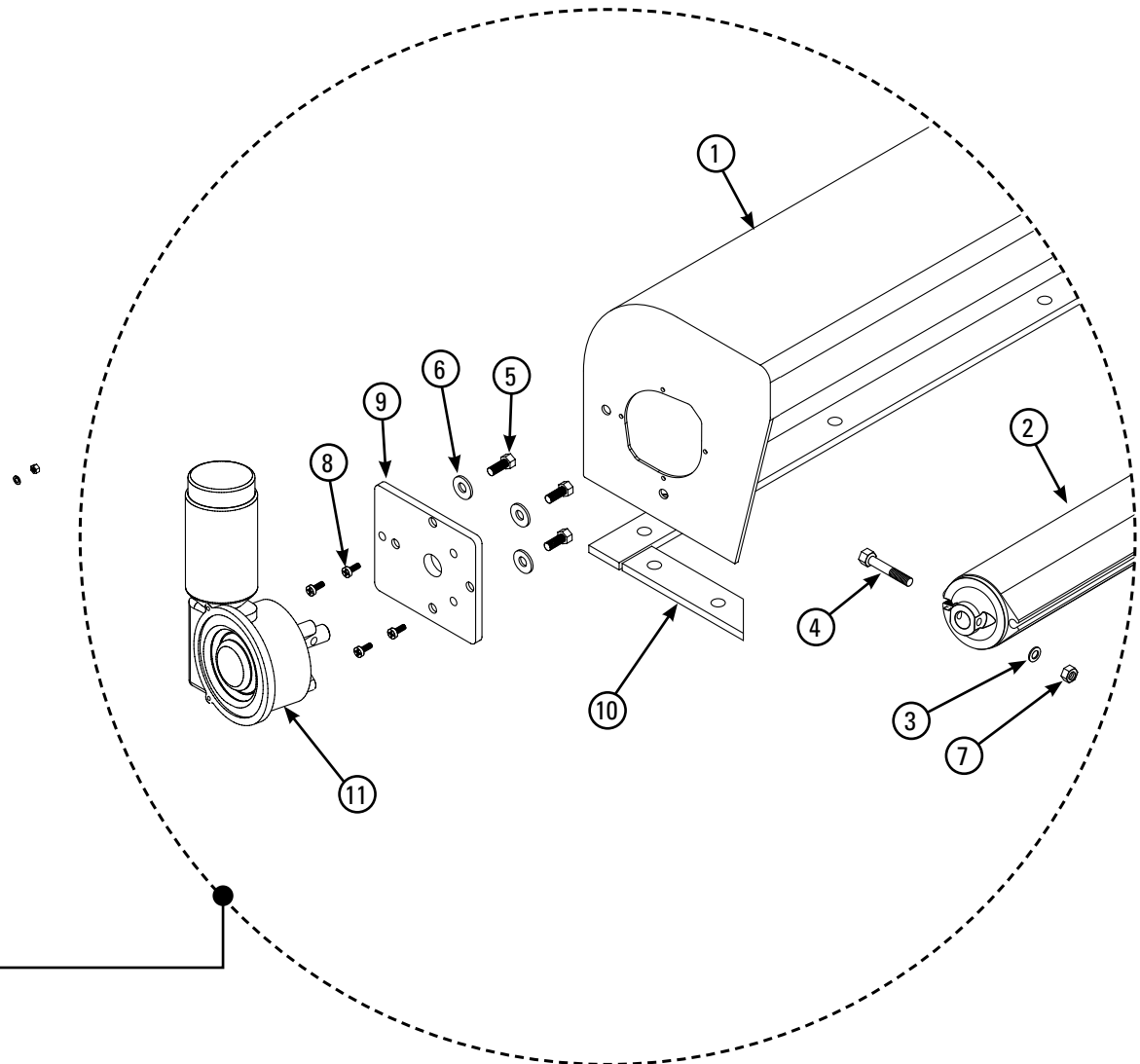
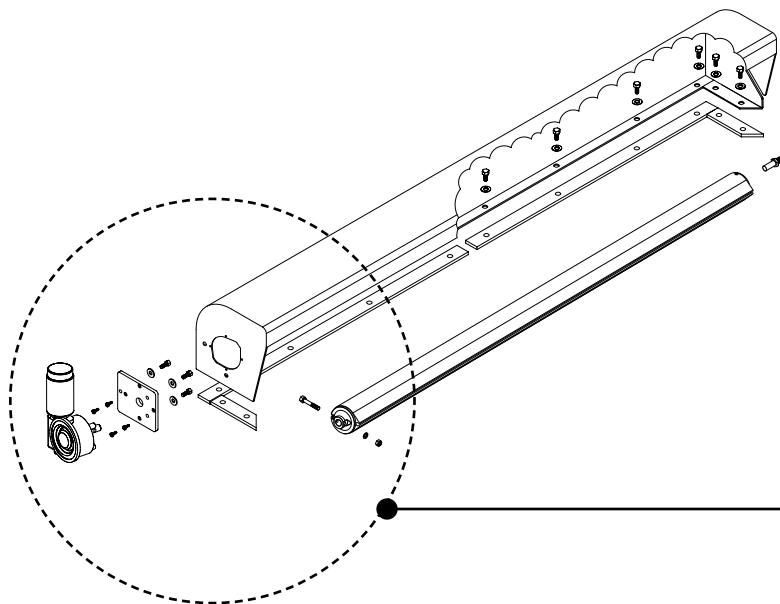
INSTALLATION INSTRUCTIONS

SuperShield™ 9500M w/EDU Conversion Kit

SuperShield™ 9500M Conversion Kit

ITEM	PART #	DESCRIPTION	QTY
1	501-01XX	SS Housing 9.5" 80, 84, 87, 89, 93, 96, 100"	1
2	501-13XX	Roller Tube Assy. 80,84,87,89,93,96,100"	1
3	505-2502	1/4" Flat Washer USS	1
4	503-3108	5/16" - 18 x 1-3/4"lg. HHCS Bolt	1
5	503-3105	5/16" - 18 x 1"lg. HHCS Bolt	3
6	505-3102	5/16" Lock Washer	15
7	504-3103	5/16" - 18 Nyloc Nut	1
8	506-9905	#10 - 32 x 1/2"lg. Phillips Head Pan	4
9	501-1235	Alum. Adaptor Plate-SW Motor	1
10	501-150X	6" Large Steel Mounting Brkt. (Specify Steel or Aluminum)	2
11	517-5909	Pulltarps® 1.3 HP 12V DC Electric Motor	1

REV. 03/09/22 WLH





ELECTRIC DRIVE CONVERSION KIT INSTALLATION

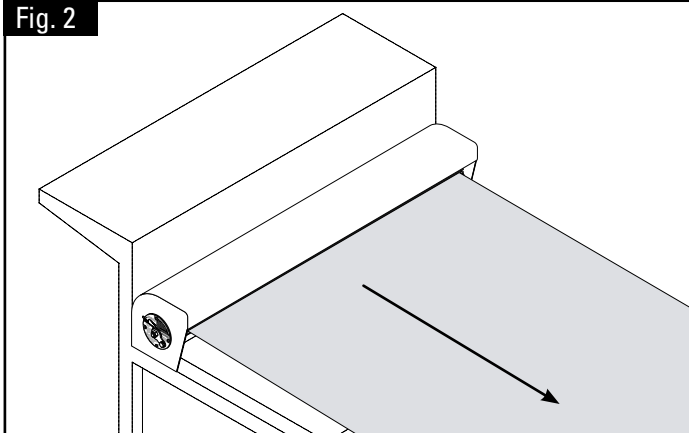
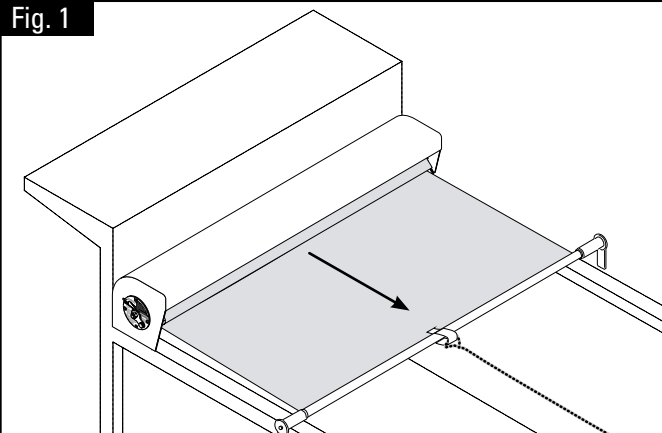


INSTALLATION INSTRUCTIONS

SuperShield™ 9500M w/EDU Conversion Kit

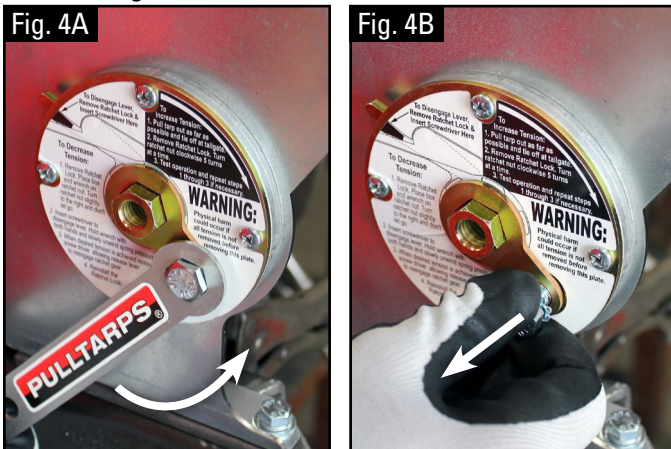
Releasing Spring Tension from Ratchet (with Tarp Installed)

Step 1: Extend tarp until it is completely unrolled from the roller tube (Fig. 1 & 2) and over the tail gate. Once tarp is fully extended, tie off at the end of the tail gate, so tarp will not roll back.

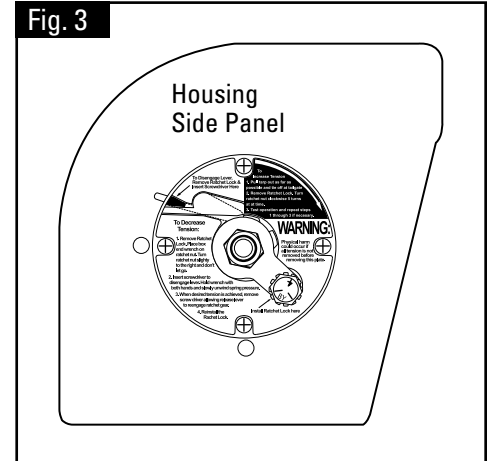
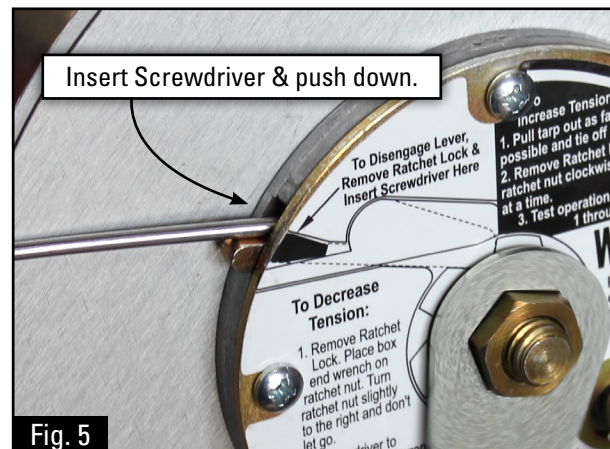


Note: The SuperShield 9500 is to remain on box during entire conversion.

Step 2: Remove the Ratchet Lock Nut and Star Lock Washer (Fig. 4A & B).

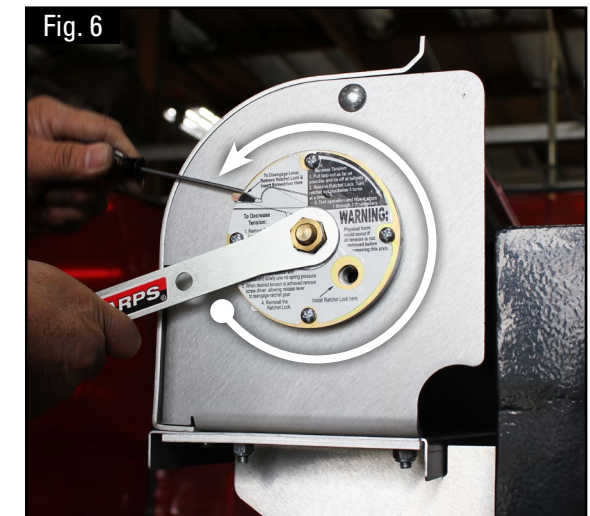


Step 3: Insert screwdriver to disengage lever (Fig. 5).



Side View (Fig. 3).

Step 4: Hold wrench and slowly unwind spring pressure (Fig. 6).





INSTALLATION INSTRUCTIONS

SuperShield™ 9500M w/EDU Conversion Kit

Removing Roller Tube

Step 5: When the tension is released from the rollertube, remove the screwdriver, allowing release lever to reengage ratchet gear (Fig. 7A & B).

Fig. 7A



Fig. 7A



Fig. 10A

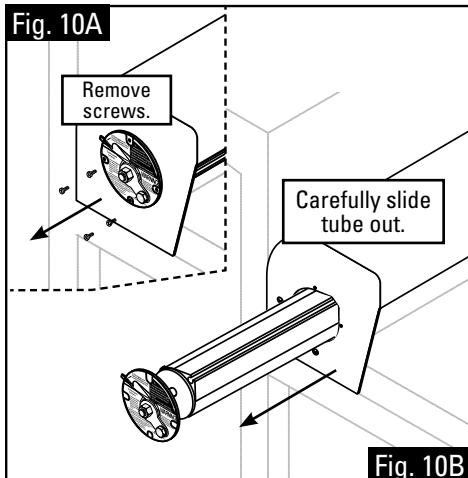


Fig. 10B

Step 8: Make sure all tension has been released from roller tube, remove four (4) Phillips Head Pan screws (Fig. 10A). After screws are removed, pull the entire roller tube assembly out of the side of the housing (Fig. 10B).

Step 9: Remove the retaining screw from the end cap (Fig. 11).

Fig. 11

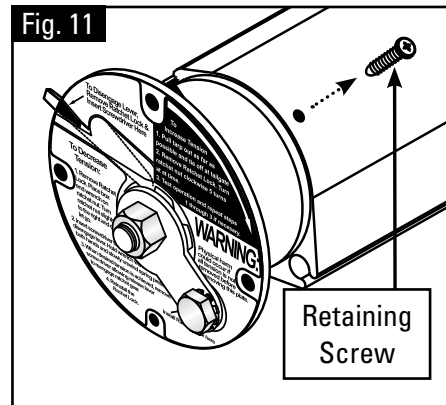
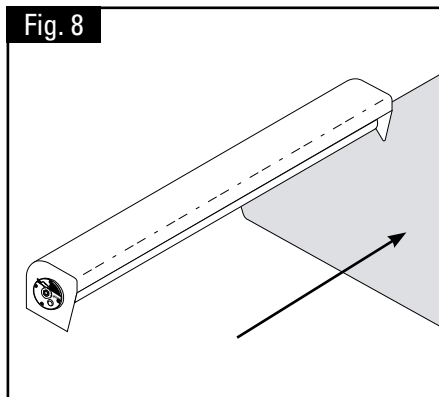
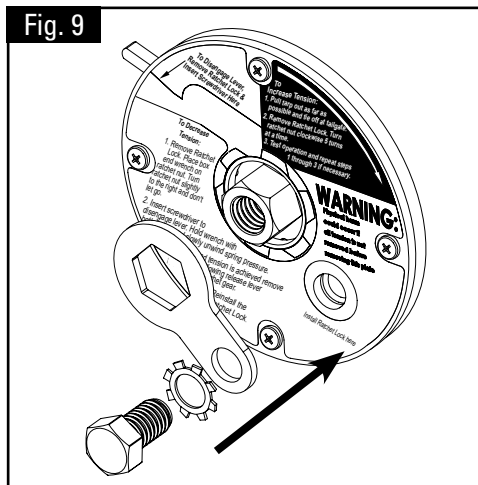


Fig. 8



Step 6: With the tension fully released from the roller tube, untie the tarp from the rope hooks and slide tarp out of roller tube on the side opposite of the ratchet (Fig. 8).

Fig. 9



Step 7: Reinstall the Ratchet Lock (Fig. 9).

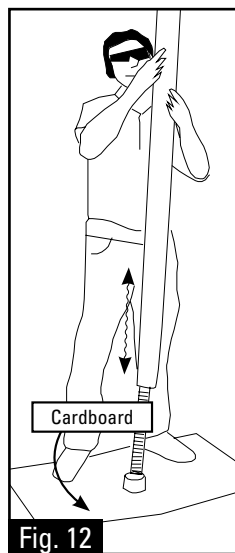


Fig. 12

Step 10: Place a piece of cardboard on the ground and hold the roller assembly vertically, with the ratchet assembly towards the ground. Shake the roller assembly up and down above the cardboard to pop the end cap and spring assembly free from the roller tube (Fig. 12).

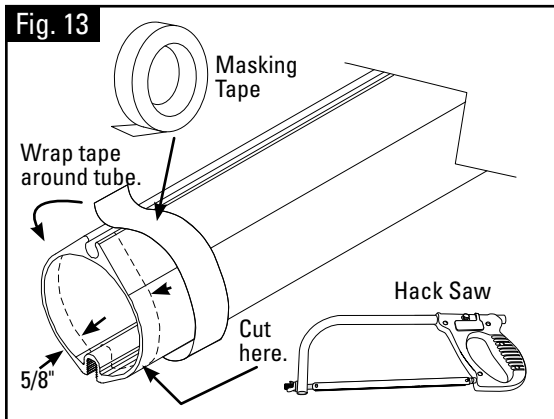
Note: The cardboard is to protect the end of the spring shaft when it breaks free.



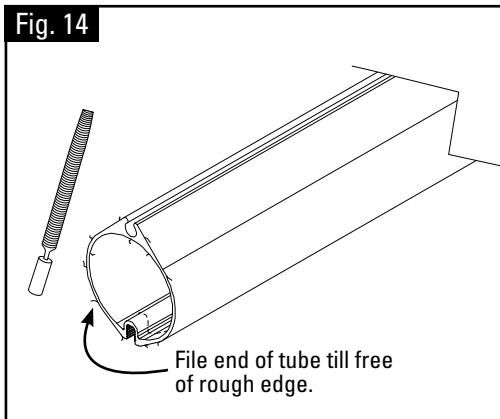
INSTALLATION INSTRUCTIONS

SuperShield™ 9500M w/EDU Conversion Kit

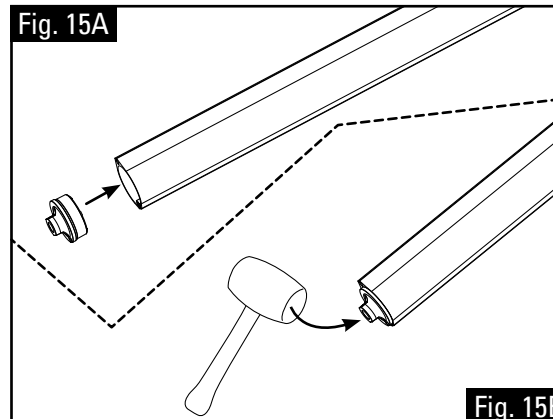
Roller Tube End Cap Installation



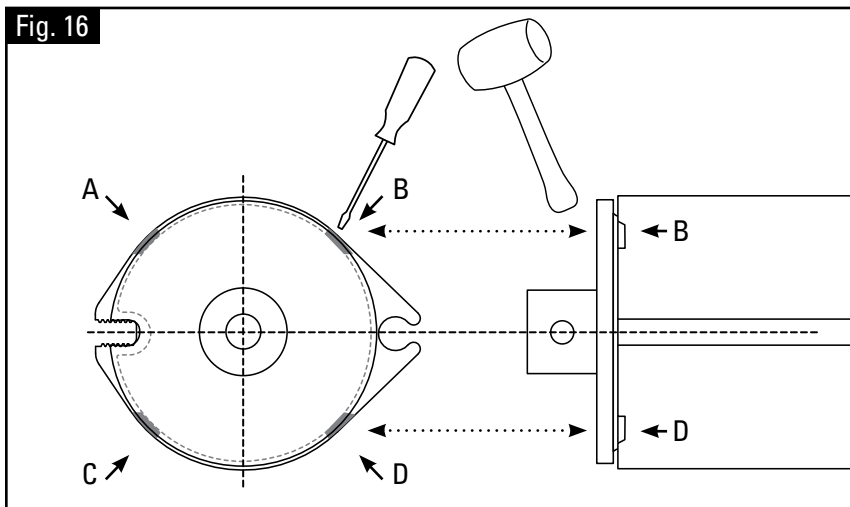
Step 11: Position the roller tube on a flat surface. Cut roller tube 5/8" from end using a hack saw (Fig. 13). **Note:** Use masking tape wrapped around tube as a cutting guide.



Step 12: After cutting off the 5/8" section and removing the masking tape (Fig. 14), file the edges to smooth out end of tube and provide a better fit for the end cap.



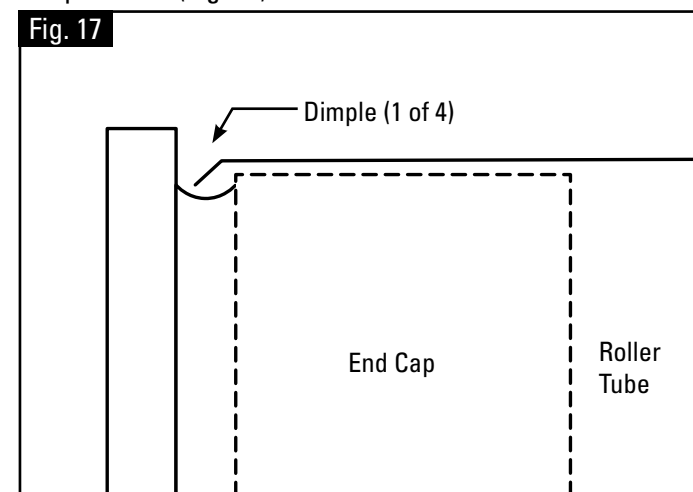
Step 13: Insert end cap into roller tube. Use a rubber mallet to tap the edges of the end cap lightly to ensure that it has been seated properly (Fig. 15A & B).



Step 14: To secure the end cap in the roller tube, make four (4) indentations or dimples to hold the end cap in place. Use a mallet and flathead screwdriver to make the dimples (Fig. 16 - A, B, C & D).

WARNING: Do not make indentation on welded seam.

Dimple detail (Fig. 17).



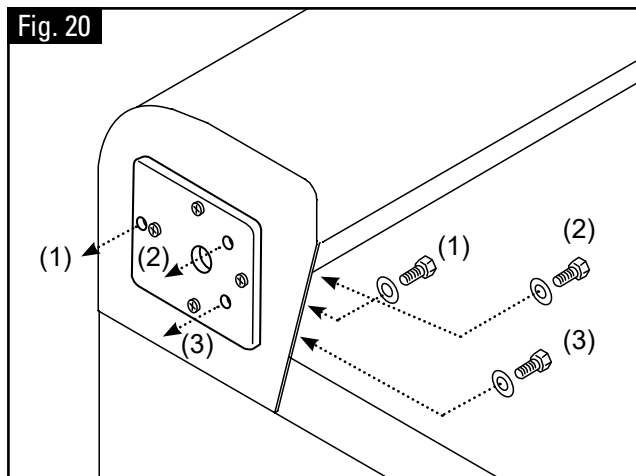
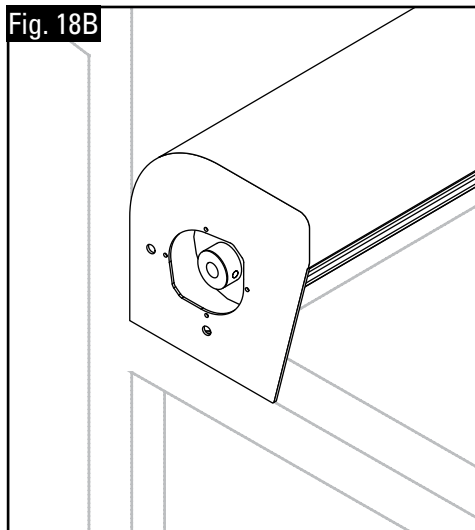
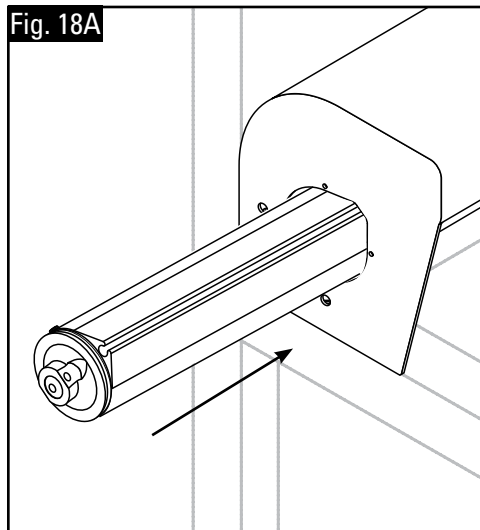


INSTALLATION INSTRUCTIONS

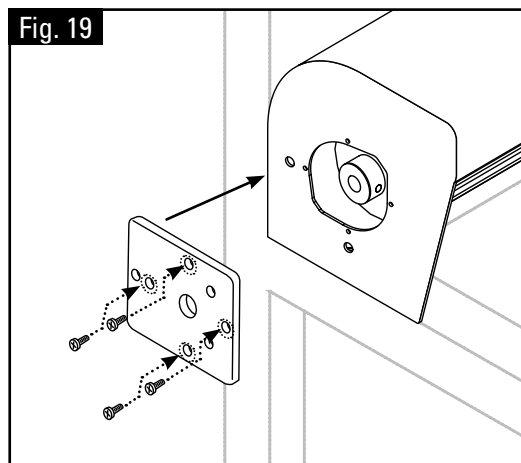
SuperShield™ 9500M w/EDU Conversion Kit

Roller Tube and Electric Motor Installation

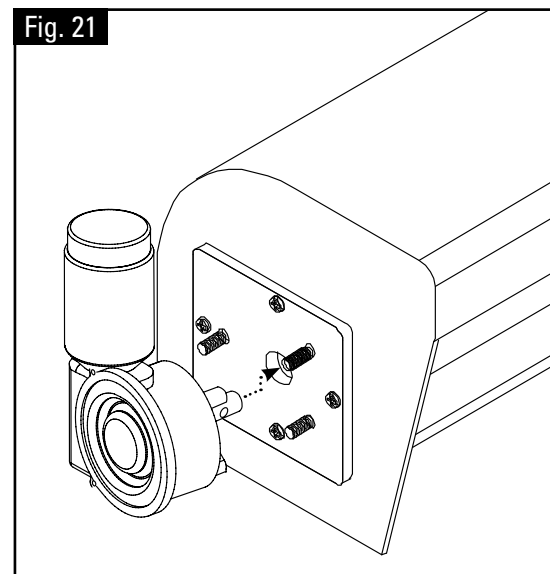
Step 15: Insert roller tube into housing (Fig. 18A & B).



Step 17: Insert three (3) HHCS bolts (Fig. 20) to allow for the Electric Motor to be mounted on the side of the Universal Super Shield.



Step 16: With the roller tube fully inserted, attach the Adaptor Plate to the Universal Super Shield housing. Secure using four (4) Phillips Head Pan screws (Fig. 19).



Step 18: With the HHCS bolts in place, attach and secure the Electric Motor (Fig. 21) to the Adaptor Plate using a 5/16" crescent wrench.



INSTALLATION INSTRUCTIONS

SuperShield™ 9500M w/EDU Conversion Kit

Roller Tube and Electric Motor Installation

Fig. 22A

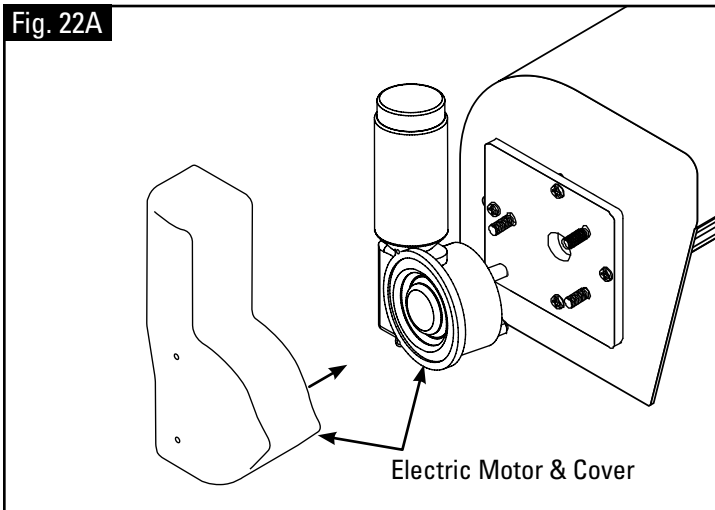
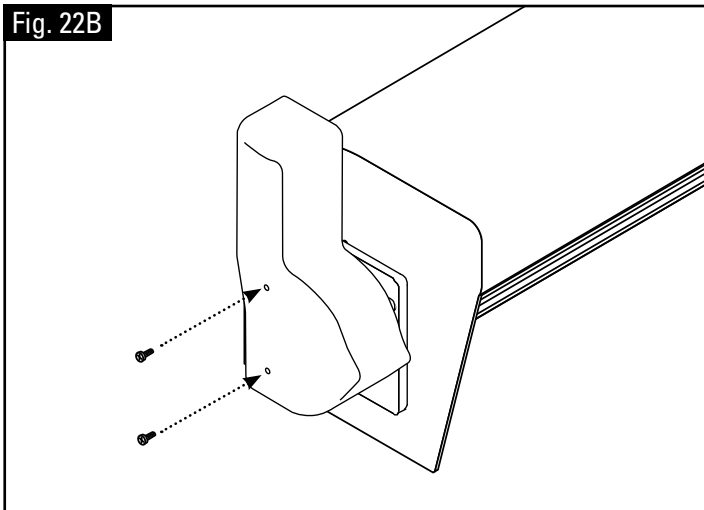


Fig. 22B



Step 19: For Switch Kit wiring instructions, see page 13.

Step 20: Place Electric Motor Cover on the mounted motor (Fig. 22A) and then secure with two (2) mounting screws (Fig. 22B).

Fig. 23A

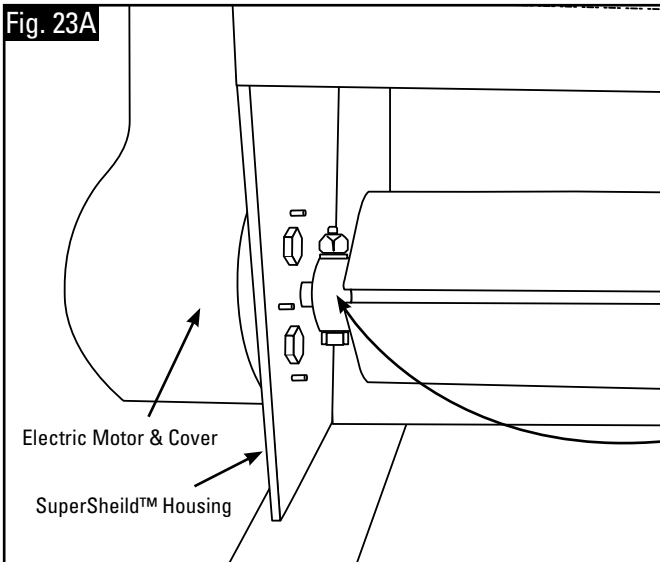
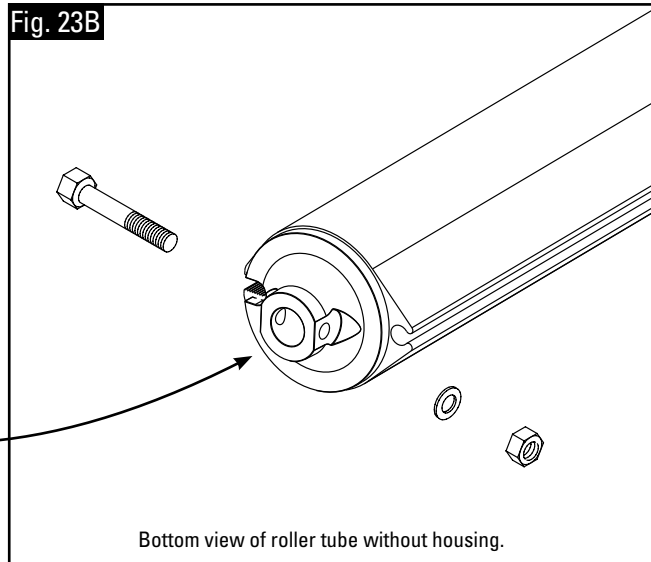


Fig. 23B



Step 21: With the Electric Motor drive shaft inserted into the roller tube end cap, install the HHCS bolt, flat washers and nyloc nut (Fig. 23A & B) and tighten.

Note: Make sure the roller tube is firmly secured to the Electric Motor shaft.

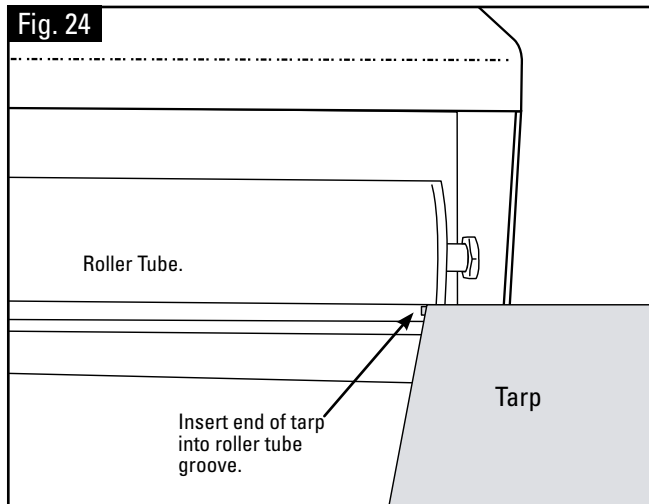


INSTALLATION INSTRUCTIONS

SuperShield™ 9500M w/EDU Conversion Kit

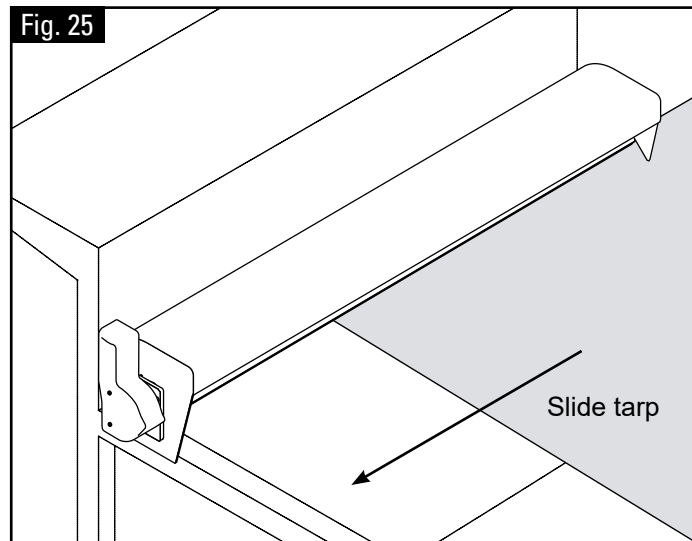
Tarp Reinstallation

Fig. 24



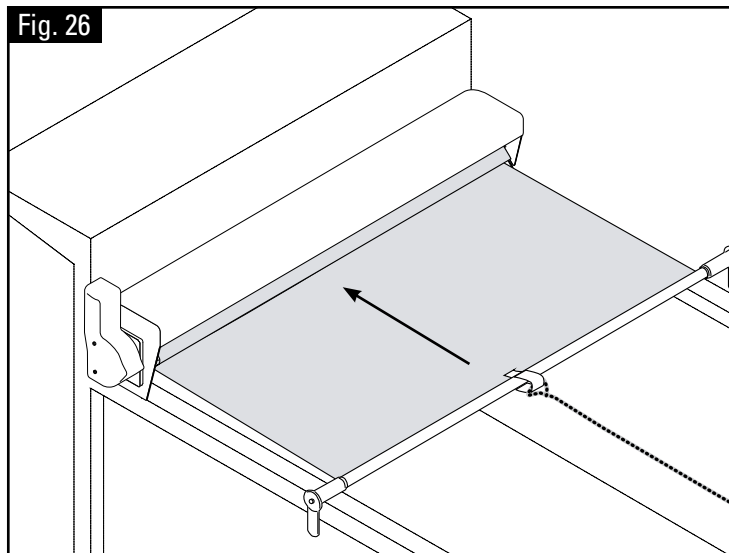
Step 22: Slide the edge of the tarp into the housing and roller tube groove (Fig. 24).

Fig. 25



Step 23: Slide tarp in roller tube groove until it is flush with the other side (Fig. 25).

Fig. 26



Step 24: Once the tarp is installed and square on the box, use the electric motor to retract tarp (Fig. 26).

Note: For Switch Kit wiring instructions, see page 13.

SPECIAL NOTE: If installing an arm kit, use the following instructions.

- [607-0145: EZ-Mount 4 Spring Enclosed Systems for up to 22'.](#)
- [607-0144: EZ-Mount Single Spring Arm Kit for up to 40'.](#)



25 AMP SWITCH KIT / 514-0101 INSTALLATION



[FOR 25 AMP SWITCH KIT INSTALLATION INSTRUCTIONS, SEE DOCUMENT 607-0059 OR CLICK HERE](#)