

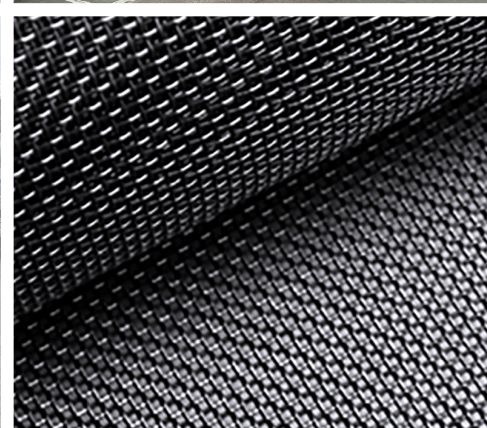
PULLTARPS®

THE TARP BOOK™

CALL 877-861-6265 • WWW.PULLTARPS.COM

SAFE  FLEET

Driving Safety Forward™



SIMPLY THE BEST

We want to thank you for taking the time to review The Tarp Book™ and for your interest in our full line of tarping systems. It is our goal at Pulltarps® to have the best working, nicest looking, highest quality tarps and tarping systems in the industry.

It is not enough for a company to just make top of the line products, the real challenge is how to manufacture them to be priced competitively and still make a profit.

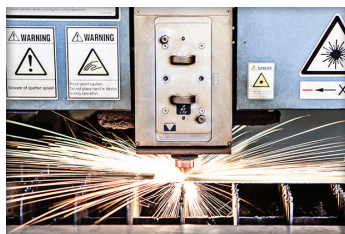
At Pulltarps®, we have accomplished this by investing in state of the art technologies and a very talented, highly motivated team of people.



At the time of purchase, this 14' x 60' CNC precision fabric cutting table was the world's largest.

Our tarps are made custom to ensure the maximum load coverage for each particular application. 96% of our Custom Tarps are shipped within 3 days.

Each tarp is marked with an order number by the computer. You can order an exact replacment using this number which is permanently marked on your tarp.



Automated computer operated equipment is at the very core of our manufacturing process.

This laser cutter precision cuts steel, stainless steel and aluminum. State of the art laser technology allows for exacting tolerances as fine as a human hair.



Computer operated brakes form complex shapes perfect for bump rolling our system housings.

Having our own CNC machinery and lasers means that we can develop innovative new products and make improvements to existing products quickly.



All of this equipment saves time and minimizes human error while maintaining tolerances way beyond the requirements of these types of products.

Pulltarps makes the best engineered tarping systems with the highest quality workmanship in the industry. Backed by service and warranty unmatched by our competitors.

TABLE OF CONTENTS

Pulltarps® EZ-Fit Systems

X-Pando & Core System EZ-Measure Details 4-5

Pulltarps® Semi-Automatic Systems

Details of Semi-Automatic Systems 6-7

Small Semi-Automatic Systems 8-9

Large Semi-Automatic Systems 10-11

Semi-Automatic Upgrades 12-13

Pulltarps® Automatic Systems

Details of Automatic Systems 14-15

Automatic Systems 16-17

Pivots 18

Accessories..... 19

Pulltarps® Tower Systems

Details of Tower Systems 20-21

Tower Systems 22-23

Additional Products, Order Forms, Accessories & Guarantees

Bunker / Weather and Shade 24-25

Universal Tarps & Fabrics 26-27

Side Flaps & Tie Downs 28

Smart Switch™ 29

Terms and Conditions 30

Order Forms..... 31-33

EZ-FIT SYSTEMS

EZ-MEASURE & CUT-TO-FIT



X-Pando™ System Advantages

X-Pando Semi-Automatic System

The X-Pando Semi-Automatic is Pulltarps' most protective EZ-Fit pull tarp system. This complete system is best for larger trucks, and can hold up to 26 feet of tarp.

The X-Pando features galvanized steel protected housing, and it operates via a pullrod and spring tension. This system also includes a hand-braided rope with bungee cord and tie-down ring.

X-Pando Automatic System

The X-Pando Automatic is Pulltarps' most protective EZ-Fit electric tarp system. This complete system is best for larger trucks, and can hold up to 34 feet of tarp. This automatic tarp system includes an arm kit with pivots and a 1.3HP electric motor.

The X-Pando features galvanized steel protected housing, and it operates via a basic smart switch.

Core™ System Advantages

Core Semi-Automatic System

The Core Semi-Automatic System is Pulltarps' most basic EZ-Fit system. This complete system is best for smaller trucks, and it can hold up to 22 feet of tarp (depending on cab shield space).

The Core Semi-Automatic System operates via a pullrod and spring tension in the roller tube. This system also includes a hand-braided rope with bungee cord and tie-down ring.

Core Automatic System

The Core Automatic is Pulltarps' most basic EZ-Fit electric tarp system. This complete system can hold up to 34 feet of tarp (depending on cab shield space) and includes a 1.3HP electric motor.

The Core Automatic System operates via a basic smart switch. This system also includes High Mount Extended Reach EZ-Mount Arm Kit.

X-Pando (Semi-Automatic) System

Part # 116-3017 (Adjustable / EZ-Measure), Part # 116-3018 (Set to Size)

Designed for applications up to 22 feet.

Width adjusts from 78" to 102" and can be set in 1" increments

Custom Widths Are Available / Tarp Priced Separately

- Holds up to 26' of tarp
- EZ-Measure™ Cut to Fit
- No rust galvanized End Plates
- Modular & easily upgradeable to an Automatic operation



X-Pando (Automatic) System

Part # 218-3017 (Adjustable / EZ-Measure), Part # 218-0215 (Set to Size)

Designed for applications up to 30 feet.

Width adjusts from 78" to 102" and can be set in 1" increments

Custom Widths Are Available / Tarp Priced Separately

- Holds up to 34' of tarp
- EZ-Measure™ Cut to Fit
- Galvanized protector for a clean appearance
- Excellent protection from loader bucket damage and falling debris

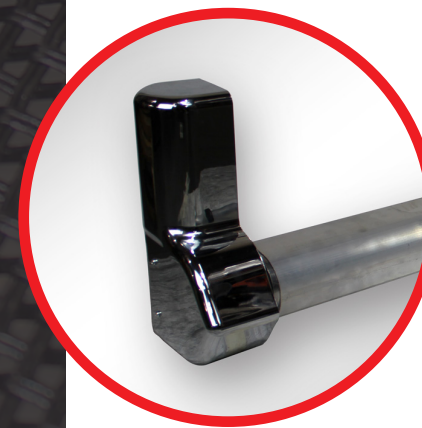
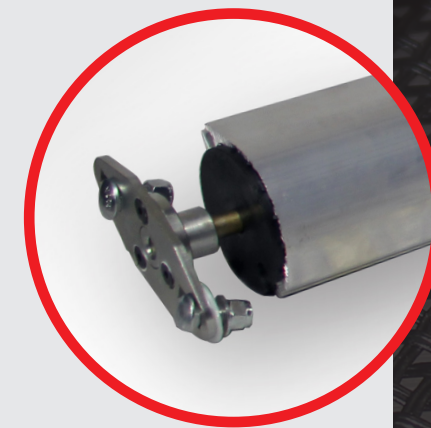
Core (Semi-Automatic) System

Part # 185-3017 (Adjustable / EZ-Measure), Part # 185-3018 (Set to Size)

Designed for applications up to 18 feet.

Custom Widths Are Available / Tarp Priced Separately

- Universal Fit
- Easy to install
- EZ-Measure™ Cut to Fit
- Modular & easily upgradeable to Automatic operation



Core (Automatic) System

Part # 285-3017 (Adjustable / EZ-Measure), Part # 285-3018 (Set to Size)

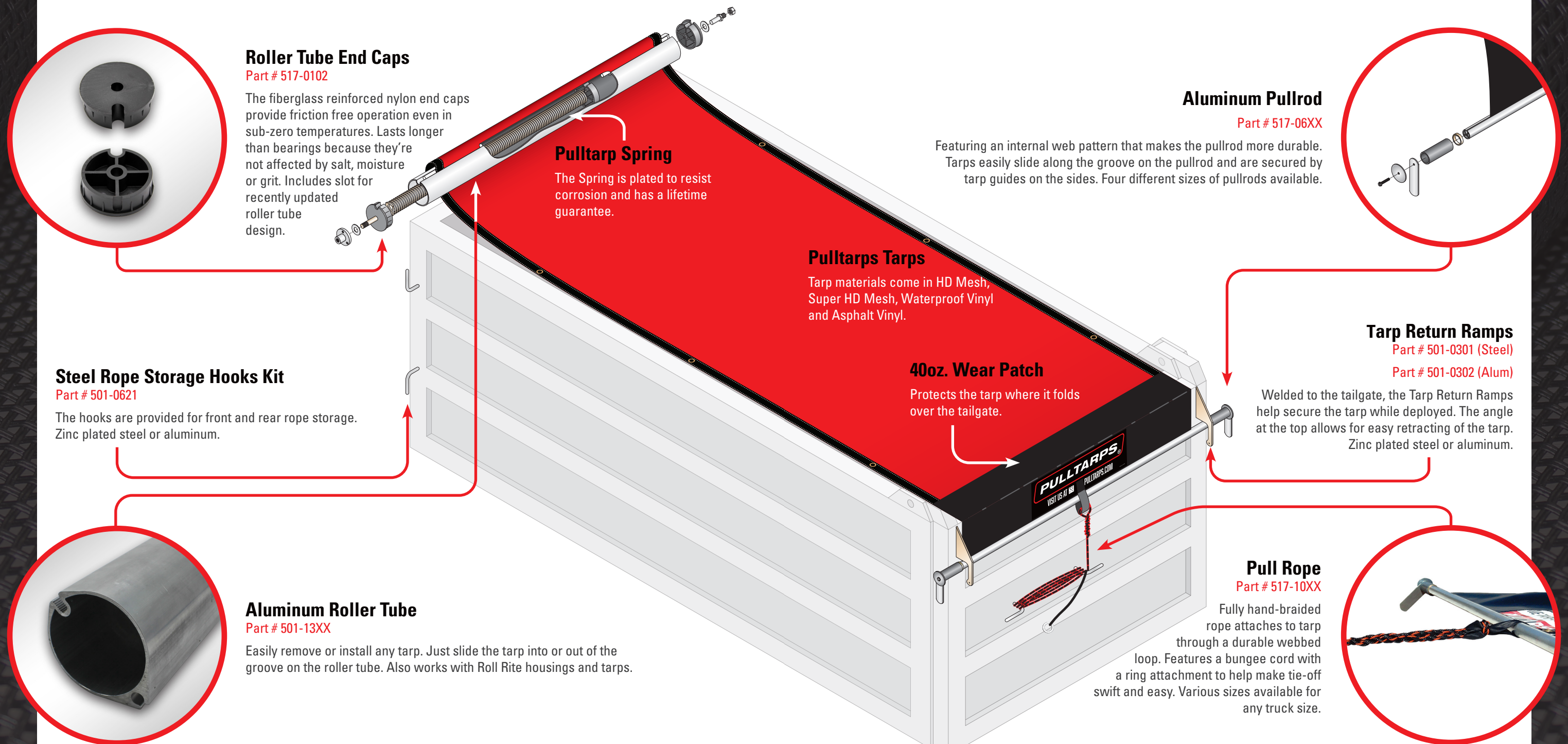
Designed for applications up to 30 feet.

Custom Widths Are Available / Tarp Priced Separately

- Easy to install
- EZ-Measure™ Cut to Fit
- Core™ Diamond End Plate
- No Welding or Fabrication required

SEMI-AUTOMATIC SYSTEMS

DETAILS MAKE THE DIFFERENCE



Roller Tube End Caps

Part # 517-0102

The fiberglass reinforced nylon end caps provide friction free operation even in sub-zero temperatures. Lasts longer than bearings because they're not affected by salt, moisture or grit. Includes slot for recently updated roller tube design.

Pulltarps Spring

The Spring is plated to resist corrosion and has a lifetime guarantee.

Aluminum Pullrod

Part # 517-06XX

Featuring an internal web pattern that makes the pullrod more durable. Tarps easily slide along the groove on the pullrod and are secured by tarp guides on the sides. Four different sizes of pullrods available.

Pulltarps Tarps

Tarp materials come in HD Mesh, Super HD Mesh, Waterproof Vinyl and Asphalt Vinyl.

40oz. Wear Patch

Protects the tarp where it folds over the tailgate.

Tarp Return Ramps

Part # 501-0301 (Steel)

Part # 501-0302 (Alum)

Welded to the tailgate, the Tarp Return Ramps help secure the tarp while deployed. The angle at the top allows for easy retracting of the tarp. Zinc plated steel or aluminum.

Steel Rope Storage Hooks Kit

Part # 501-0621

The hooks are provided for front and rear rope storage. Zinc plated steel or aluminum.

Aluminum Roller Tube

Part # 501-13XX

Easily remove or install any tarp. Just slide the tarp into or out of the groove on the roller tube. Also works with Roll Rite housings and tarps.

Pull Rope

Part # 517-10XX

Fully hand-braided rope attaches to tarp through a durable webbed loop. Features a bungee cord with a ring attachment to help make tie-off swift and easy. Various sizes available for any truck size.

SMALL SEMI-AUTOMATIC SYSTEMS

BEST OPTION FOR WORK TRUCKS, JUNK HAULING AND LANDSCAPING TRAILERS



Small Semi-Automatic System Advantages

SuperShield™ 8500M

Fully welded 12 gauge steel construction offers the best protection from falling debris. The system can hold up to 22' of tarp.

Steel Protector™ (Semi-Automatic)

The Steel Protector Semi-Automatic tarp system can hold up to 22' of tarp. This system is great for smaller dump truck bodies that require some protection from falling debris.

Aluminator™ 7000M

The Aluminator 7000M System is designed for weight saving applications and is much lighter than the Steel Protector. The system is great for mounting inside the box and can hold up to 28' of tarp.

Open 6000M System

The Open 6000M System is the most basic and least expensive system we offer. Known as an "Open System", there is no housing to protect the tarp and roller from falling debris. Can hold up to 22' for tarp.

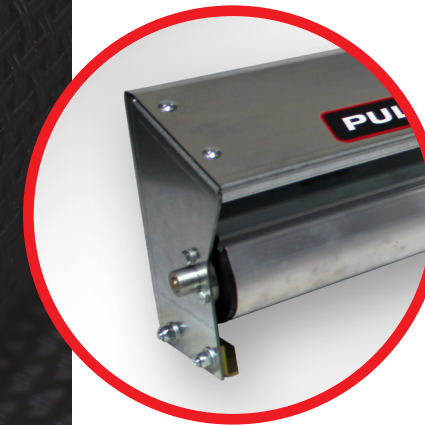
SuperShield 8500M System

Part # 107-0215 / Designed for applications up to 18 feet.

Stock Widths 80", 84", 87", 89", 93", 96"

Custom Widths Are Available / Tarp Priced Separately

- Holds up to 22' of tarp
- Powder coated for corrosion resistance
- Can be mounted for over-the-top applications
- Housing has a vertical back that mounts flush with cab shield



Steel Protector (Semi-Automatic) System

Part # 106-0215 / Designed for applications up to 18 feet.

Stock Widths 80", 84", 87", 89", 93", 96", 100"

Custom Widths Are Available / Tarp Priced Separately

- Galvanized Steel Housing
- Steel Bolt-in Spring Shaft Anchor
- Steel or Aluminum Mounting Brackets
- Housing has a vertical back that mounts flush with cab shield

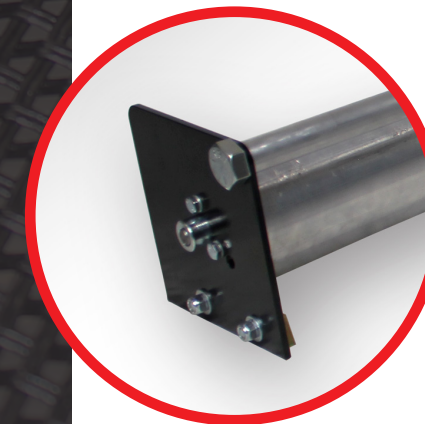
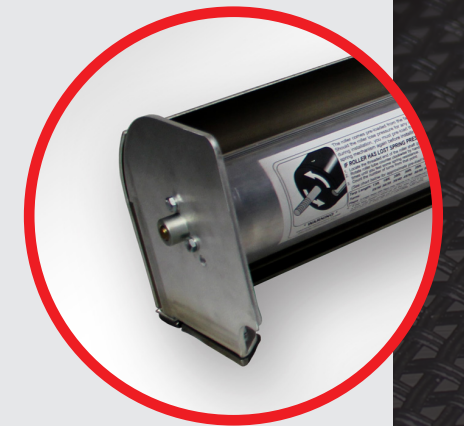
Aluminator 7000M System

Part # 103-0215 / Designed for applications up to 24 feet.

Stock Widths 80", 84", 87", 89", 93", 96", 100"

Custom Widths Are Available / Tarp Priced Separately

- Optional Wind Guard available
- Steel Bolt-in Spring Shaft Anchor
- Steel or Aluminum Mounting Brackets
- Mounting bars make installation, maintenance, and removal easy



Open 6000M System

Part # 101-0215 / Designed for applications up to 18 feet.

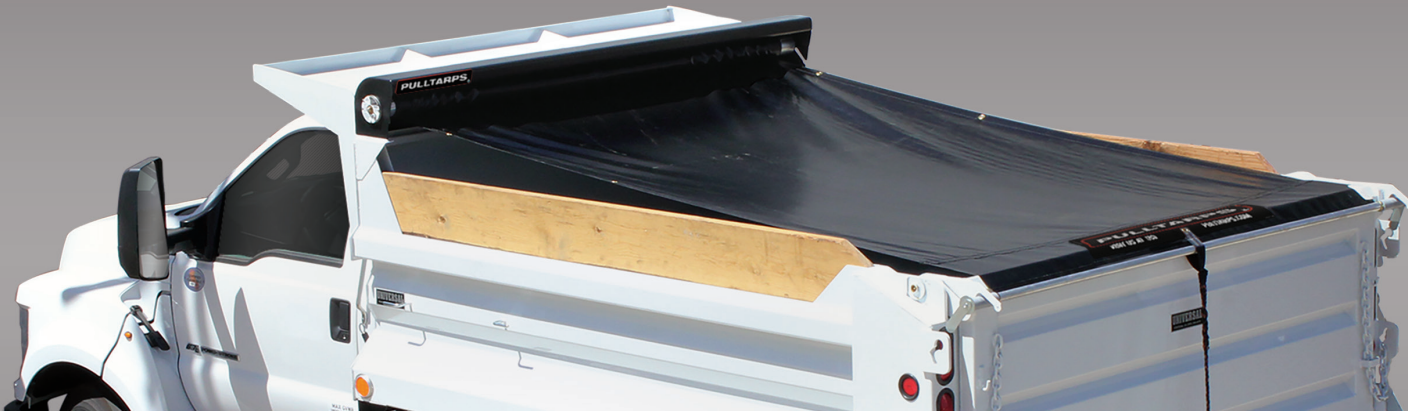
Stock Widths 80", 84", 87", 89", 93", 96", 100"

Custom Widths Are Available / Tarp Priced Separately

- Lightweight & Economical
- Black Powder Coated End Plates
- Steel Bolt-in Spring Shaft Anchor
- Steel or Aluminum Mounting Brackets

LARGE SEMI-AUTOMATIC SYSTEMS

MADE EXTRA TOUGH FOR DUMP TRUCKS, BELLY DUMPS AND END DUMPS



Large Semi-Automatic System Advantages

SuperShield™ 9500M

The SuperShield 9500M is designed for longer applications. The external ratcheting spring adjustment allows for easy spring tensioning in the field.

Steel Protector +™ (Semi-Automatic)

The Steel Protector + System is designed for longer applications that require some protection from falling debris. Galvanized housing and end plates prevent corrosion over time.

Aluminator™ 8500M

The Aluminator 8500M System is designed for weight saving applications and is much lighter than the Steel Protector +. The system is great for mounting inside the box.

Open 9000M System

The 9000M System is a basic and less expensive system. Known as an “Open System”, there is no housing to protect the tarp and roller from falling debris.

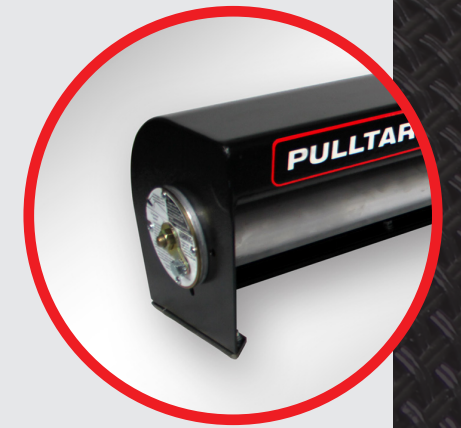
SuperShield 9500M System

Part # 108-0215 / Designed for applications up to 30 feet.

Stock Widths 80", 84", 87", 89", 93", 96", 100"

Custom Widths Are Available / Tarp Priced Separately

- Holds up to 34' of tarp
- Powder coated steel housing resists corrosion
- Fully welded construction for superior strength
- Mounting bars make installation, maintenance, and removal easy



Steel Protector + (Semi-Automatic) System

Part # 116-0215 / Designed for applications up to 22 feet.

Stock Widths 80", 84", 87", 89", 93", 96", 100"

Custom Widths Are Available / Tarp Priced Separately

- Holds up to 26' of tarp
- Galvanized Steel Housing
- Steel or Aluminum Mounting Brackets
- Pulltarps® Semi-Automatic Ratchet Assembly

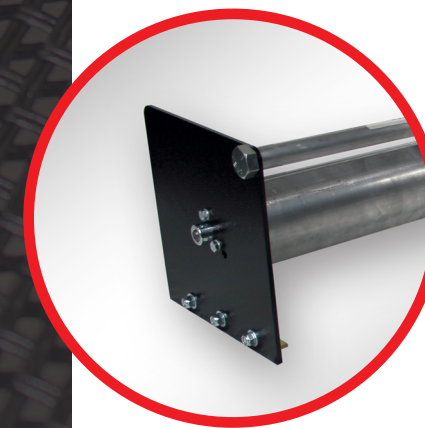
Aluminator 8500M System

Part # 117-0215 / Designed for applications up to 28 feet.

Stock Widths 80", 84", 87", 89", 93", 96", 100"

Custom Widths Are Available / Tarp Priced Separately

- Holds up to 32' of tarp
- Steel or Aluminum Mounting Brackets
- Pulltarps® Semi-Automatic Ratchet Assembly
- Wind Guard prevents wind from getting under the tarp



Open 9000M System

Part # 105-0215 / Designed for applications up to 22 feet.

Stock Widths 80", 84", 87", 89", 93", 96", 100"

Custom Widths Are Available / Tarp Priced Separately

- Holds up to 26' of tarp
- Lightweight & Economical
- Black Powder Coated End Plates
- Steel or Aluminum Mounting Brackets

SEMI-AUTOMATIC UPGRADES

UPGRADES INCLUDE LOAD CLIMBER, TARP TAME AND SIDE FLAP TARPS



Load Climber (Patent # 5,697,663 & 5,882,062)

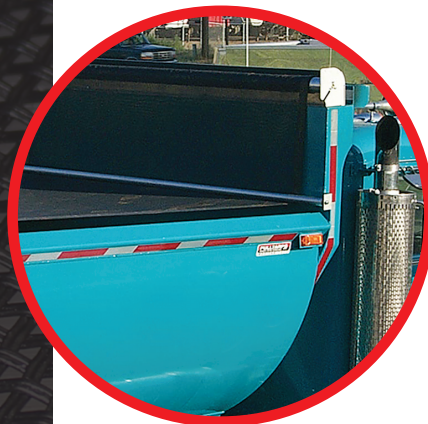
Part # 501-0901

Our patented Load Climber is a simple solution to keep the pullrod from digging into peaked loads. The Load Climber's rollers lift the tarp up over the load and can easily be added to your pullrod without modifying the tarp.

Asphalt Load Climber

Part # 501-0913

The Asphalt Load Climber is rated for a maximum heat deflection of 400° fahrenheit. The Asphalt Load Climber's rollers lift the tarp up over the load and can easily be added to your pullrod without modifying the tarp.



Tarp Tamer

Part # 501-0701

The Tarp Tamer's fixed roller holds the front of the tarp down to prevent material from blowing out while on the road. The Tarp Tamer can be used with Pulltarps® Semi-Automatic, Manual Arm, and Automatic systems.



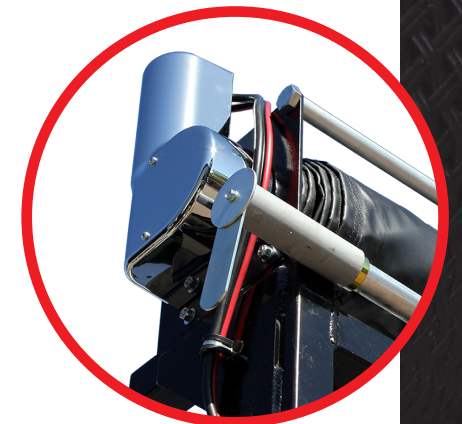
Side Flap Tarp

Custom Configured Item

Our Side Flap tarps provide maximum coverage. They can be deployed in approximately 3 minutes and untarp in about 2 minutes.

SEMI-AUTOMATIC UPGRADES

UPGRADES INCLUDE ELECTRIC DRIVE UNIT, MANUAL ARMS AND AUTOMATIC ARMS



Electric Pulltarps® Upgrade

Part # 110-0215 (Open 9000)

Part # 111-0215 (SuperShield™ 9500)

Electric Pulltarps® Systems are designed for longer applications where spring tension alone is not enough to return the tarp. The electric motor feeds the tarp out as you pull and then retracts the tarp back in.

Manual Arm Upgrade

Part # 113-2214 (Straight-Steel)

Part # 113-2215 (Bent-Steel)

Part # 113-2224 (Straight-Alum)

Part # 113-2225 (Bent-Alum)

Semi-Automatic Pulltarps® Systems are easily upgraded to steel or aluminum Manual Arm Systems. The arms are available in bent or straight configurations up to 22'. The Manual Arms allows the user to easily deploy the tarp over heaped loads.



Automatic Arm Upgrade

Part # 230-0215

All Semi-Automatic Pulltarps® Systems can easily be retrofitted to an Automatic System with steel or aluminum Arm sets. Automatic Systems can be operated safely from inside the cab.

(Price depends on options chosen)



AUTOMATIC SYSTEMS

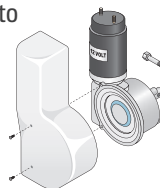
DETAILS MAKE THE DIFFERENCE



Electric Motor Drive

Part # 517-5909

Our new and improved high-output tarp system motor runs on 1.3 horse power with a 90:1 gear ratio; this motor is strong enough to reel in 40 feet of tarp and includes a 5 year warranty to ensure years of service.



Pulltarp Roller Tube

Easily remove or install any tarp in the Aluminum Roller Tube using the Keder or Threaded groove.

High Mount Inside the Box Pivots

Part # 501-2206-1 (Passenger Side Shown)

Designed for Rear Transfer and High Mount Boxes. The pivots are fully enclosed and pivot on UHMW bushings. Powerful enough to deploy even when covered with some material.



Single Spring Pivot

Part # 501-1101 (Left) & 501-1102 (Right)

Designed for applications up to 40'. The pivots are fully enclosed and pivot on UHMW bushings for smooth and long lasting operation.



Enclosed 4 Spring Pivot

Part # 501-2203 (Left) & 501-2204 (Right)

Available for applications up to 22'. UHMW bearings for smooth operation so the arms operate evenly and can be mounted in the High and Low positions. Long lasting operation.



Pulltarps Tarps

Tarp materials come in HD Mesh, Super HD Mesh, Waterproof Vinyl and Asphalt Vinyl.

40oz. Wear Patch

Protects the tarp where it folds over the tailgate.

Teardrop Bumper Kit

Part # 501-1293

Teardrop bumper kit contains all the urethane bumpers and attaching hardware. Fits all Pulltarps Tear Drop Pullbars.

Standard Arm Tubing

Part # 501-1202 (Steel)

Part # 501-1211 (Alum)

Arms made of common fence pipe or aluminum tubing. Allows for inexpensive repairs in the field.



Arm Catchers

Part # 501-1247

A small lip in the Arm Catcher holds the arms in place. This stops the arms from bouncing while in transit and further reduces noise.



AUTOMATIC SYSTEMS

SAFE IN CAB OPERATION OF LARGE DUMP TRUCKS, BELLY DUMPS AND END DUMPS



Small Automatic System Advantages

Steel Protector™ (Automatic)

Designed for applications that require some protection from falling debris. The system has a Vertical Back that Mounts flush with Cab Shield.

Aluminator™ 7000E System

The Aluminator 7000E is designed for weight saving applications and is 30 pounds lighter than the Steel Protector. The system is great for mounting inside the box.

Open 9000E System

A basic system is great for applications where falling debris and loader damage is not a concern.

Large Automatic System Advantages

SuperShield™ 9500M

The SuperShield 9500M is designed for longer applications. The external ratcheting spring adjustment allows for easy spring tensioning in the field.

Steel Protector +™ (Automatic)

The Steel Protector + System is designed for longer applications that require some protection from falling debris. Galvanized housing and end plates prevent corrosion over time.

Aluminator™ 8500E

The Aluminator 8500M System is designed for weight saving applications and is much lighter than the Steel Protector +. The system is great for mounting inside the box.

Pulltarps® Automatic Systems

Fully automatic tarping from inside the cab is fast and lets you get more loads per day. Automatic systems are available with galvanized steel or aluminum housings. Systems are complete with arms, springs, motor, wire, and switch kit with relays.

Steel Protector (Automatic) System

Part # 208-0215 / Designed for applications up to 20 feet.

Stock Widths 80", 84", 87", 89", 93", 96", 100"

Custom Widths Are Available / Tarp Priced Separately

- Holds up to 24' of tarp
- Utilizes the Basic Smart Switch™ kit
- Geared Electric Motor kit and all wire is included
- Includes Galvanized End Plates and Galvanized Steel Housing



Aluminator 7000E System

Part # 204-0215 / Designed for applications up to 24 feet.

Stock Widths 80", 84", 87", 89", 93", 96", 100"

Custom Widths Are Available / Tarp Priced Separately

- Holds up to 28' of tarp
- Wind Guard is Included
- Lightweight Aluminum Construction
- Basic Smart Switch™ kit and all wire is included



Open 9000E System

Part # 201-0215 / Designed for applications up to 30 feet.

Stock Widths 80", 84", 87", 89", 93", 96", 100"

Custom Widths Are Available / Tarp Priced Separately

- Holds up to 34' of tarp
- Spacer Rod Comes Standard
- Black Powder Coated End Plates
- Geared Electric Motor kit and all wire is included



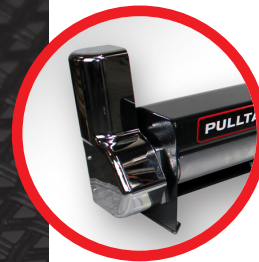
SuperShield 9500E System

Part # 210-0215 / Designed for applications up to 30 feet.

Stock Widths 80", 84", 87", 89", 93", 96", 100"

Custom Widths Are Available / Tarp Priced Separately

- Holds up to 34' of tarp
- Powder coated steel housing resists corrosion
- Fully welded construction for superior strength
- Mounting bars make installation, maintenance, and removal easy



Steel Protector + (Automatic) System

Part # 218-0215 / Designed for applications up to 30 feet.

Stock Widths 80", 84", 87", 89", 93", 96", 100"

Custom Widths Are Available / Tarp Priced Separately

- Holds up to 34' of tarp
- Galvanized Roller Tube
- Galvanized End Plates and Galvanized Steel Housing
- Geared Electric Motor kit and all wire is included



Aluminator 8500E System

Part # 234-0215 / Designed for applications up to 28 feet.

Stock Widths 80", 84", 87", 89", 93", 96", 100"

Custom Widths Are Available / Tarp Priced Separately

- Holds up to 32' of tarp
- Steel Bolt-in Spring Shaft Anchor
- Steel or Aluminum Mounting Brackets
- Wind Guard prevents wind from getting under the tarp



PIVOTS

Single Spring Pivot

Part # 501-1101 (Left) & 501-1102 (Right)

Designed for applications up to 40'. The pivots are fully enclosed and pivot on UHMW bushings for smooth and long lasting operation.

Enclosed 4 Spring Pivot

Part # 501-2203 (Left) & 501-2204 (Right)

Available for applications up to 22'. UHMW bearings for smooth operation so the arms operate evenly and can be mounted in the High and Low positions.

Enclosed 3 Spring High Mount

Part # 501-2205 (Right) & 501-2206 (Left)

The pivot holds three springs inside the fully-enclosed, heavy duty spring housing. The housing pivots smoothly on long-wearing UHMW bushings and is designed to work on High Mount tarp systems.

Steel 4 Spring Pivot

Part # 501-2207 (Left) & 501-2208 (Right)

Great for applications up to 22'. These pivots are powder coated silver for a great appearance.

ACCESSORIES

Retrofit for the EZ-Mount Systems

Part # 501-2235

This base was designed to be interchangeable with other brands so it can be used to repair existing systems using the new EZ-Mount systems, giving you indexed spring tension to the tailgate.

Replacement Spring

Part # 517-9921

Replacement spring made to work with all Pulltarps open style 4 Spring Arm and our 3 Spring Enclosed pivot housings.

Standard Arm Tubing

Part # 501-1202 (Steel)

Part # 501-1211 (Alum)

Arms made of common fence pipe or aluminum tubing. Allows for inexpensive repairs in the field.

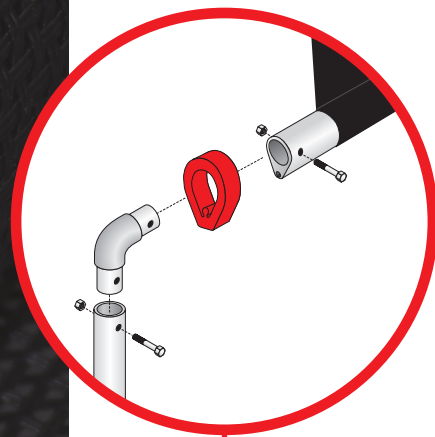
Tarp Tamer Bow

Part # 501-1801

The Tarp Tamer Bow is an inexpensive option that works to hold the front of your tarp down to help prevent wind damage. This innovative design is easy to install and inexpensive to repair if it gets damaged from loaders or falling debris. This is a considerable savings over other designs on the market.

TOWER SYSTEMS

DETAILS MAKE THE DIFFERENCE



Teardrop Pullbar

Part # 501-0430

Tarp slides in groove and wraps around our pullbar design.

Pulltarps Tarps

Tarp materials come in HD Mesh, Super HD Mesh, Waterproof Vinyl and Asphalt Vinyl.

Automatic and Semi-Automatic Dual Stage Tower System

Part # 513-0014
(Automatic-Shown)

Part # 513-0019
(Semi-Automatic)

The Telescoping Tower System can utilize the Electric Motor or Ratchet Spring Tension Adjustment System.



Tower System Options

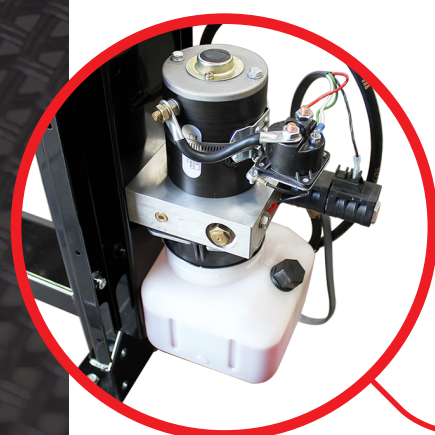
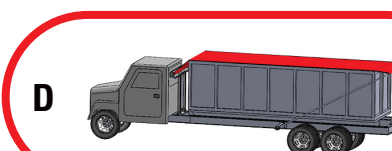
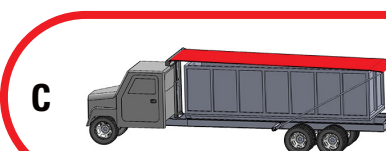
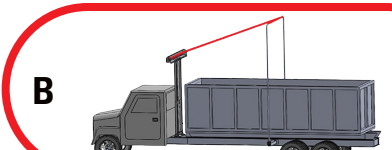
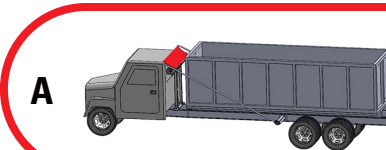
The Tower System can be operated with or without Arm systems.

Dual Stage Tower System

The Tower adjusts from 52" lowered, to 124" when fully extended.

Tower System Operation

You can raise the Tower System from the lowered position (A) up to 10' (B). Once the tarp is extended (C), you can lower the Tower to fully secure the load (D).



Single Valve Pump

Part # 501-2316 (12 Volt)

Part # 501-2317 (24 Volt)

The Tower System includes everything necessary for installation along with a self contained single valve hydraulic pump.

TOWER SYSTEMS

SPECIFICALLY DESIGNED FOR HOOKLIFTS AND DEBRIS HAULING ROLL OFFS



Dual Stage Tower System Advantages

SuperShield™ 9500E & Open 9000E

You can't top our Dual Stage Tower System designed specifically for the Waste Industry. The Tower adjusts from 52" lowered, to 124" when fully extended.

Single Spring Arm Kit

These kits are "Simply The Best" because the heavy duty spring housings are fully enclosed, pivot smoothly on UHMW bushings and are not affected by water, salt or grit. The massive 2" spring is powder coated to resist corrosion better than any other spring on the market. The arms are made of Galvanized fence pipe or Common Aluminum pipe for easy replacement.

SuperShield™ 9500M & Open Semi-Automatic

The Tower System is also available with the ultra reliable semi-automatic Pulltarps® System. The heavy duty 12 gauge steel SuperShield™ 9500M housing comes with our external spring adjustment and has a lifetime guarantee* on the roller spring.

Pulltarps® Automatic & Semi-Automatic Tower Systems

Our Tower Systems can extend a full 4 feet of Tower lift with a power up and power down function. The fixed ram eliminates hose movement and wear and the Black Box has wireless controls.

Automatic Dual Stage Tower

Part # 513-0014 (Automatic)

Available in SuperShield 9500 & Open Housing /Tarp Priced Separately

- Installs in a few hours
- Black Box Wireless Controls
- Wiring terminal ends pre-assembled
- Bolts to frame with U bolts (included)
- 2" x 4-3/16" wall rectangular steel tube
- Full 4 feet of Tower lift. / Power up and down
- Fixed Ram eliminates hose movement and wear



Semi-Automatic Dual Stage Tower

Part # 513-0019

Available in SuperShield 9500 & Open Housing /Tarp Priced Separately

- Power up and down
- Installs in a few hours
- Full 4 feet of Tower lift
- Black Box Wireless Controls
- Wiring terminal ends pre-assembled
- Bolts to frame with U bolts (included)
- 2" x 4-3/16" wall rectangular steel tube
- Fixed Ram eliminates hose movement and wear



Black Box Wireless Controls

Part # 517-0945

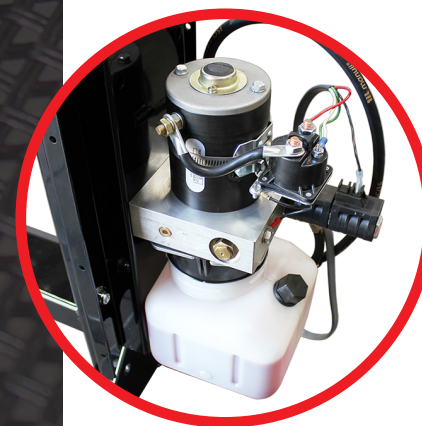
Sealed membrane push button operation and a new work light button with remote control access. The box is also pre-wired with improved external connections for fast hookup. No Key lockout needed.



Single Valve Pump

Part # 501-2316 (12 Volt) & Part # 501-2317 (24 Volt)

The Tower System includes everything necessary for installation along with a self contained single valve hydraulic pump.



BUNKER / WEATHER & SHADE

EASY OPERATION FOR BUNKERS, STORAGE RACKS & FOR COVERING EQUIPMENT



Pulltarps® Bunker Covers Advantages

Open 9000MB & Open 9000EB

Semi-Automatic (MB) and Automatic (EB) bunkers are ground operated by a single person and NO lifting heavy tarps. Regular maintenance isn't needed and the tarp is stored neatly when not in use.



Open Housing with Ratchet or Electric Motor

Powder Coated End Plates and Galvanized Roller Tube fits bunker sizes with a maximum width of 183" or 288".

(Can fit up to 28' in length, depending on specifications.)

Open 9000 MB Shown / Tarp Priced Separately

Pulltarps® Weather & Shade Curtains

Our Weather & Shade Curtains are made to protect you and your property from wind, rain, snow and sunlight. We have a lifetime guarantee on springs, all moving parts, and semi-automatic spring return.

Bunker Systems

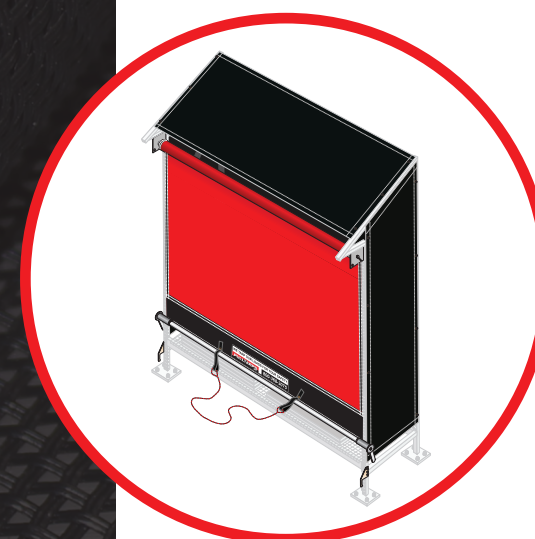
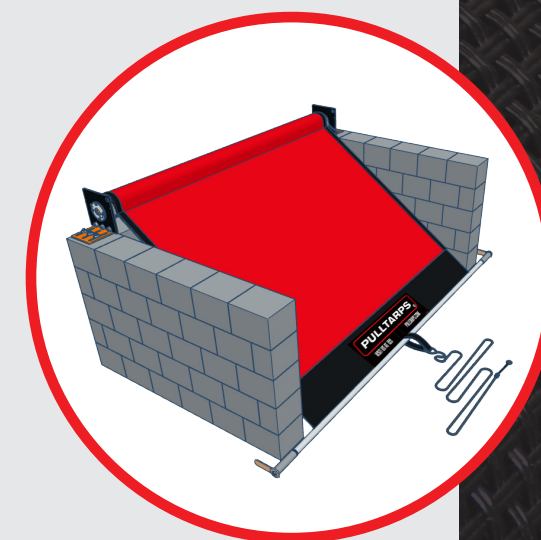
Part # 105-1830 (183")

Part # 105-2880 (288")

Most material bins are required to be covered.

Pulltarps offers the easy solution with our Bunker Covers.

- No lifting heavy tarps
- Versatile design fits most bins
- Safe one-person ground operation
- Complies with Local and Federal Regulations



Weather & Shade Curtains

Our Custom Tarps are made to protect you and your property from wind, rain, snow and sunlight.

- No lifting heavy tarps
- Versatile design fits most bins
- Safe one-person ground operation
- Regular Maintenance is not required

Bunker Cover / Weather & Shade

Fabric lasts for years.

- Grommets Every 3 Feet
- 18oz. Vinyl is Waterproof
- Seamless, Full-Width Tarps
- Reinforced with Webbing Along the Length of Each Side



UNIVERSAL TARPES & FABRICS

MADE OF TOUGH, HIGH QUALITY MATERIALS THAT CAN LAST FOR YEARS



Universal Replacement & Throw Tarp Advantages



Universal Replacement Tarp

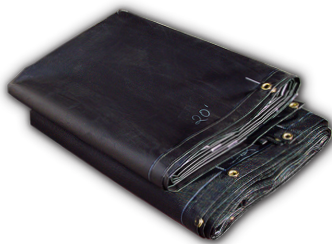
Part # 746-XXXX, 716-XXXX & 736-XXXX

Pulltarps Universal Replacement Tarps are designed to work for multiuse applications on dump trucks, end dumps, belly dumps, and other trucks. These tarps will fit most competitors tarp systems.

(Note: XXX-XXXX = Tarp Type - Length / Width)

Universal Throw Tarps

Pulltarps offers Universal Throw Tarps made of our high quality materials. These Throw Tarps are great for covering equipment, trucks, boats, trailers, construction sites and materials.



18oz. Vinyl

(10'x12')	Part # 409-1201	(10'x32')	Part # 409-3201	(10'x12')	Part # 409-1204	(10'x32')	Part # 409-3204
(10'x16')	Part # 409-1601	(10'x36')	Part # 409-3601	(10'x16')	Part # 409-1604	(10'x36')	Part # 409-3604
(10'x20')	Part # 409-2001	(10'x40')	Part # 409-4001	(10'x20')	Part # 409-2004	(10'x40')	Part # 409-4004
(10'x24')	Part # 409-2401	(10'x44')	Part # 409-4401	(10'x24')	Part # 409-2404	(10'x44')	Part # 409-4404
(10'x28')	Part # 409-2801			(10'x28')	Part # 409-2804		

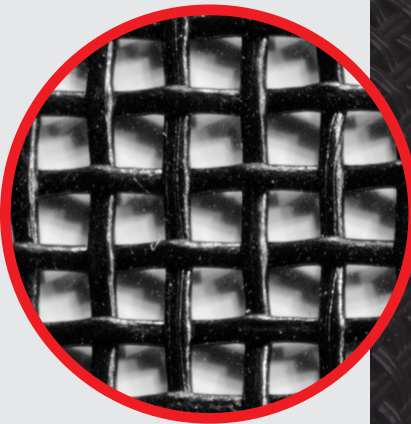
HD Mesh

11oz. Heavy Duty (HD) Mesh Tarp

Open weave heavy duty mesh provides protection for hauling junk and landscaping debris.

Part # 741-XXXX & 743-XXXX

- Grommets every 6 Feet
- 11 oz. Heavy-Duty Mesh
- Seamless, Full-Width Tarps
- Reinforced with Webbing Along the Length of each side



18oz. Super Heavy Duty (HD) Mesh

Double-weave is less permeable and ideal for hauling sand, gravel, and debris.

Part # 751-XXXX, & 753-XXXX

- Grommets every 6 Feet
- Seamless, Full-Width Tarps
- 18 oz. Super Heavy-Duty Mesh
- Reinforced with Webbing Along the Length of each side



18oz. Waterproof Vinyl

For trucks that work in inclement weather and need protection from the elements.

Part # 711-XXXX & 713-XXXX

- Grommets Every 3 Feet
- 18 oz. Vinyl is Waterproof
- Seamless, Full-Width Tarps
- Reinforced with Webbing along the length of each side

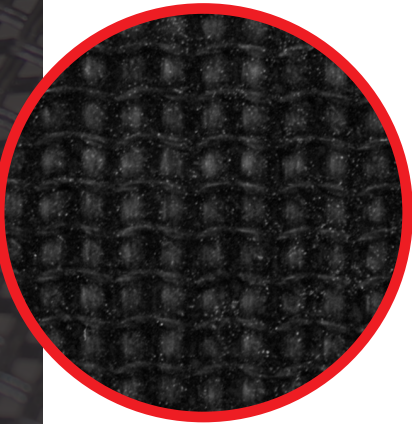


14oz. 400° Asphalt

Asphalt tarps feature a urethane coating for years of use for road repair and asphalt paving.

Part # 731-XXXX & 733-XXXX

- Waterproof fabric
- Urethane coating
- Grommets every 3 feet
- Rated for 400-degree use

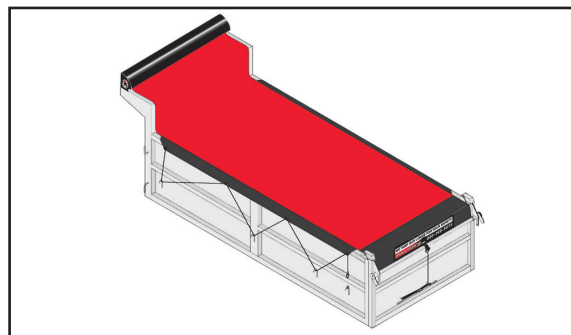


SIDE FLAPS & TIE DOWNS

PROVIDES MAXIMUM COVERAGE & SECURES YOUR TARP FROM WIND DAMAGE

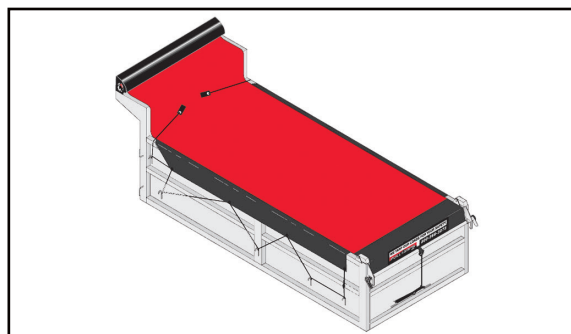
Simple Operation

Our Side Flap and Tie Down systems are ground operated, can be deployed in approximately 3 minutes and un-tarp in about 2 minutes. Our Side Flap and Tie Down system will stop the tarp from flapping in the wind, increasing the life of your tarp and keeping your load completely covered.



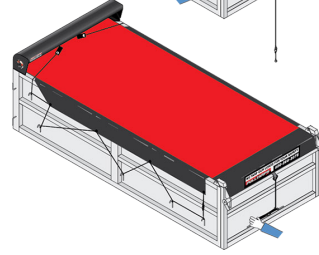
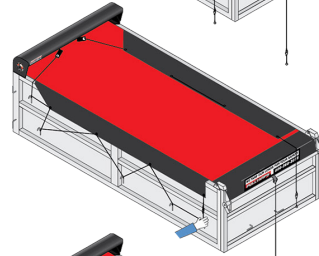
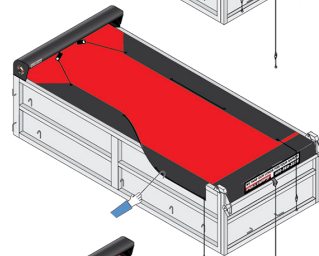
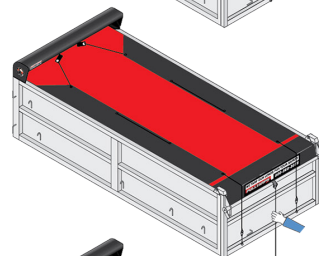
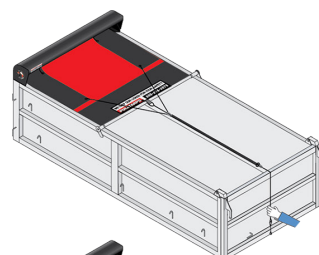
Tie Down Tarp

Our Tie Down system secures the tarp from wind damage. For some narrower boxes, this may be all the width you need to get the job done. This ground operated system is fast and easy to use. Added as an option to any Pulltarps®, Manual Arm or Automatic Arm System tarp.



Side Flap Tarp

Our Side Flap tarps provide maximum coverage. The tie down ropes are attached to the middle of the tarp, so when you pull the tie down rope from the back it will cause the flap to flip up on top of the tarp. The front of the flap is tapered so the tarp rolls up neatly on the roller. The design is so unique it's actually patented.



Step 1.

Uncoil the rope from the rope storage hooks and pull the tarp out over the body.

Step 2.

Release tie down ropes from the snap clip on the pullrope. Flip the tie down rope over the corner of the body.

Step 3.

Using the flap hook provided, pull the flaps down along the side of the body.

Step 4.

Starting from the front, pull the tie down rope under the body hooks.

Step 5.

Pull the tie down rope tight at the rear and secure with the attached bungees. Repeat steps 3-5 on the other side.

Step 6.

Finish by wrapping the pullrope around the storage hooks at the rear. Secure the pullrope with the attached bungee.

(Patent # 5,697,664)

SMART SWITCH™

ALLOWS THE DRIVER TO CONTROL THE TARP SYSTEM FROM CAB

Smart Switch™ Deluxe Kit

12 Volt - **Part # 514-0139**

- In-cab Switch
- The breaker is waterproof and has larger contact points
- The relay is of higher amperage and has soldered coil leads to the connection points



Smart Switch™ Basic Kit

12 Volt - **Part # 514-0114** & 24 Volt - **Part # 514-0118**

- In-cab Switch
- Operators do not have to get out of the cab to run tarp
- Uses a low amperage switch to control a high amperage relay
- Installation is easier with no heavy cables running in and out of the cab



Smart Switch™ with External Switch

12 Volt - **Part # 501-9953** & 24 Volt - **Part # 501-9949**

- Dependable. Uses a low amperage switch to control a high amperage relay
- Installation is faster with only four simple connections to make on the control unit
- Can be used to control any other 12 or 24 volt application that requires heavy duty switching



Smart Switch™ with External and In-cab Switch

12 Volt - **Part # 501-9952**

- External manual switch on control unit for backup
- Operators do not have to get out of the cab to run tarp
- Uses a low amperage switch to control a high amperage relay
- Installation is faster with only a single three strand wire going to the switch in the cab



Heavy Duty Trailer Connector

2 wire with steel mount - **Part # 514-0501** & 2 wire with aluminum mount - **Part # 514-0502**

- Great for longer wire runs
- Large contacts resist corrosion
- Highest amperage rating available
- For heavy duty and severe service applications



TERMS & CONDITIONS

Pulltarps Guarantee

Pulltarps® Guarantee Number One:

30 Day “NO BS” Satisfaction Guarantee: You have 30 days from the date of delivery to install your first Semi-Automatic & Automatic tarping system and try it. If you wish to return it for any reason, then call 1-877-921-3996 and getting a return authorization number anytime within that 30 days. We will even pay the charges to ship it back! You risk nothing!

Pulltarps® Guarantee Number Two:

Provided this product is installed and operated in accordance with the manufacturer’s recommendations, we guarantee to replace any moving part of our pullout type tarping systems that wears out for as long as you own it. Moving parts covered under this guarantee are the tension spring, torque block, and internal parts of ratchet mechanism. Systems are not guaranteed against damage by rocks, loaders etc. The tarp is guaranteed against defects in workmanship and material for a period of 6 months from date of purchase, but is not guaranteed against tearing or wearing out.

Automatic Arm Guarantee:

Provided this product is installed and operated in accordance with the manufacturer’s recommendations, the Automatic System carries a one year guarantee on all moving parts, and the lifetime guarantee on the UHMW bushings. The electric motor carries two prorated warranty options from the manufacturer, a 1 year warranty (Part # 517-1909) and a 5 year warranty (Part # 517-5909). The tarp is guaranteed against defects in workmanship and material for a period of 6 months from date of purchase, but is not guaranteed against tearing or wearing out.

Pulltarps Shipping Policy

Shipping:

Our products are shipped within 3-4 Days with the exception of custom orders, using the following carriers: FedEx, UPS, and numerous large freight carriers. To return your product, you should mail your product to: 1250 North Marshall Ave, El Cajon California United States 92020. You will be responsible for paying for your own shipping costs for returning your item. Shipping costs are non-refundable. If you receive a refund, the cost of return shipping will be deducted from your refund. Depending on where you live, the time it may take for your exchanged product to reach you, may vary. If you are shipping an item over \$50, you should consider using a trackable shipping service or purchasing shipping insurance. We don’t guarantee that we will receive your returned item.

Note:

For parts, orders processed after 2 p.m. PST will be shipped out the following business day. Based on product availability, we generally ship out orders 3-4 business days after the date of purchase. Please visit Pulltarps.com for any updates or changes to the shipping policy.

Returns:

You have 30 days from the date of delivery to install your first Semi-Automatic & Automatic tarping system and try it. If you wish to return it for any reason, then call 1-877-921-3996 and getting a return authorization number anytime within that 30 days. We will even pay the charges to ship it back! You risk nothing!

Refunds:

Our policy is to process the returned merchandise within 72 hours of receiving it. If you have not received a credit after two weeks following the return being processed (allowing for shipping transit time), or need to contact us for another reason, please contact me at 1-877-921-3996. Please have the RMA # available to help in getting your questions answered promptly.

Exchanges:

Our policy is to process the Warranty Inspections within 72 hours of receiving it. If you have not received a response within that time frame (allowing for shipping transit time), or need to contact us for another reason, please contact me at 1-877-921-3996. Please have the RMA # available to help in getting your questions answered promptly.

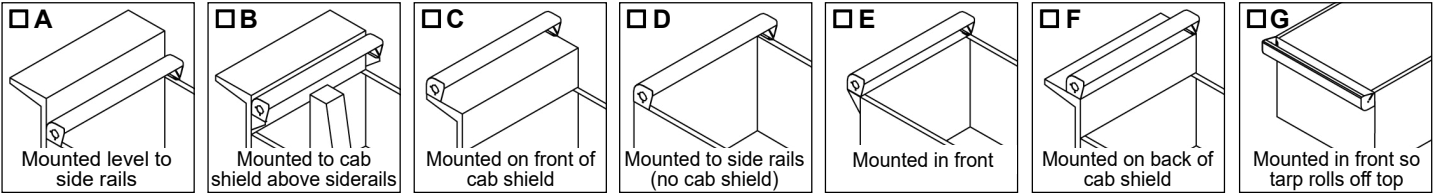
Tax Exempt Orders:

If you have a state resell certificate and you want to use it for state tax purposes, please place your orders directly with a Customer Service team member by calling 1-877-431-2865 or visit our Contact Us page and fill out the form. A representative will get back to you asap.

Pulltarps Mfg. Order Form
Semi-Automatic Systems

Bill to: (Company)	Account#	Ship to: (Company)
Address:		Address:
City:	State:	Zip:
P.O#:	Email:	Phone: Fax:

System Housing Mounting Position:



Vehicle Information Section: (Please give as much detail as possible)

Truck/Trailer Mfg: _____ Date of Mfg: _____ GVWR#: _____

Body Type:

☐ Dump ☐ Pup (Bobtail) ☐ Belly ☐ End Dump ☐ Dump Transfer
☐ Stake Bed ☐ Roll Off

Materials Hauled:

☐ Coal ☐ Aggregate ☐ Sand ☐ Asphalt ☐ Wood Chips
☐ Demo ☐ Other

Body Material:

Body:
☐ Steel ☐ Aluminum

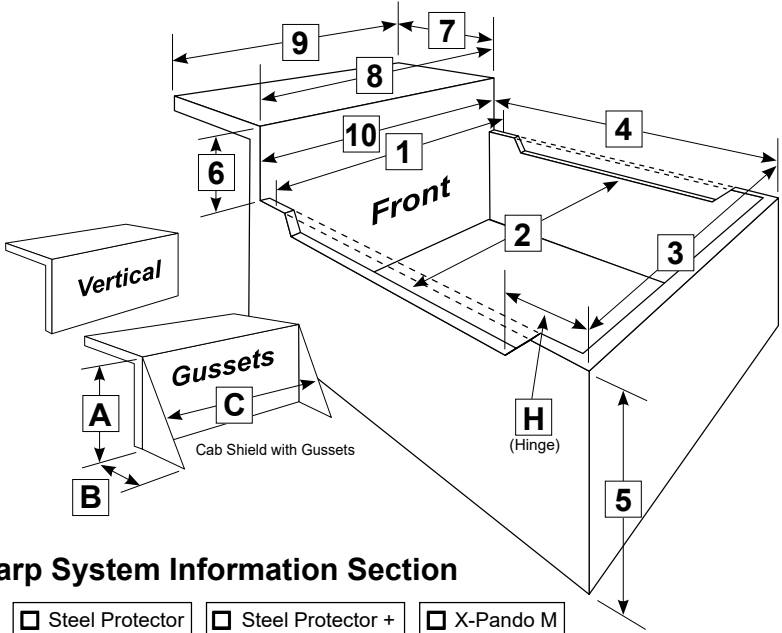
Tailgate:
☐ Steel ☐ Aluminum

Rail Type:

☐ Square ☐ Diamond (Diagonal)

Body Measurements:

1	Outside Box Width (Front)	
2	Inside Box Width	
3	Outside Box Width (Tailgate)	
4	Overall Box Length	
5	Box Height	
6	Cab Shield Height	
7	Cab Shield Length	
8	Cab Shield Width (Rear)	
9	Cab Shield Width (Front)	
10	Head Board Width	
H	Tailgate Hinge	
A	Gusset Height (if equipped)	
B	Gusset Depth (if equipped)	
C	Gusset Width (if equipped)	



System Type:

Manual Arms
☐ Yes
☐ No

Housing Model:

☐ Open 6000M ☐ Open 9000M ☐ Steel Protector ☐ Steel Protector + ☐ X-Pando M
☐ SuperShield™ 8500M ☐ SuperShield™ 9500M ☐ Aluminator 7000M ☐ Aluminator 8500M

Tarp System Information Section

Tarp Materials:

HD Mesh	Super HD Mesh	18 oz. Vinyl	14 oz. Asphalt
<input type="checkbox"/> Black	<input type="checkbox"/> Black	<input type="checkbox"/> Black	<input type="checkbox"/> Black

Options:

☐ Electric Drive ☐ Load Climber ☐ Tarp Tamer ☐ Side Flaps

Quantity: Note: please use separate order form if ordering for different size equipment or different tarp system type or sizes.

ALL CUSTOM-MADE TARPS ARE NON-RETURNABLE

Taking actual and accurate physical measurements of your equipment are essential for a proper fitting and functioning tarp system. Please provide all requested information to avoid processing errors or delays. Purchasers are responsible for the accuracy of all submitted measurements. By submitting this order, the purchaser agrees to Pulltarps Mfg. terms and conditions.

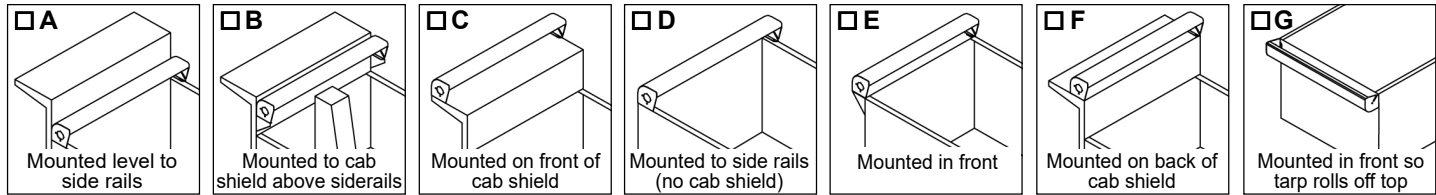
Purchaser Approval: _____ Date: _____

Order Desk # (877) 861-6265
Order Desk Fax # (619) 449-3782

Pulltarps Mfg. Order Form
Automatic Systems

Bill to: (Company) Account# Ship to: (Company)
Address: Address:
City: State: Zip: City: State: Zip:
P.O#: Email: Phone: Fax:

System Housing Mounting Position:



Vehicle Information Section: (Please give as much detail as possible)

Truck/Trailer Mfg: Date of Mfg: GVWR#:

Body Type:

Dump Pup (Bobtail) Belly End Dump
Dump Transfer Stake Bed Roll Off

Body Material:

Body: Steel Aluminum

Tailgate: Steel Aluminum

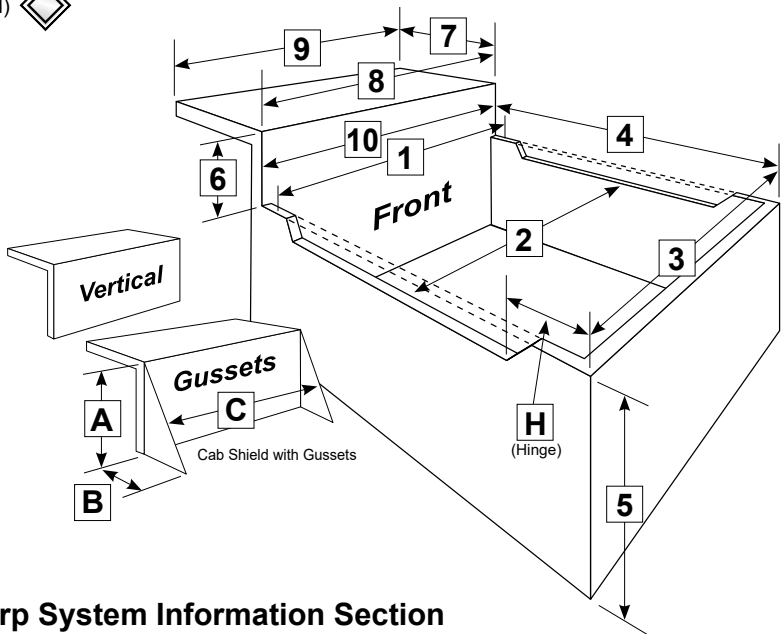
Materials Hauled:

Coal Sand Demo Wood Chips
Aggregate Asphalt Other

Rail Type: Square Diamond (Diagonal)

Body Measurements:

1 Outside Box Width (Front)
2 Inside Box Width
3 Outside Box Width (Tailgate)
4 Overall Box Length
5 Box Height
6 Cab Shield Height
7 Cab Shield Length
8 Cab Shield Width (Rear)
9 Cab Shield Width (Front)
10 Head Board Width
H Tailgate Hinge
A Gusset Height (if equipped)
B Gusset Depth (if equipped)
C Gusset Width (if equipped)



Tarp System Information Section

Housing Model:

Open 9000E Steel Protector Steel Protector + X-Pando E Aluminator 7000E Aluminator 8500E SuperShield 8500E
SuperShield 9500E

System Type:

Automatic Arm Kits: 4-Spring - 22', 25', 30', Inside Box, Single Spring, 33', 40', High Mount
Arm Type: Straight, Bent
Arm Material: Aluminum, Steel
Smart Switch Options: Basic Cab, External & In-Cab, External, Wireless Remote

Tarp Materials:

HD Mesh: Black
Super HD Mesh: Black
18 oz. Vinyl: Black
14 oz. Asphalt: Black

Options:

Electric Drive Load Climber Tarp Tamer Side Flaps

Quantity: Note: please use separate order form if ordering for different size equipment or different tarp system type or sizes.

ALL CUSTOM-MADE TARPS ARE NON-RETURNABLE

Taking actual and accurate physical measurements of your equipment are essential for a proper fitting and functioning tarp system. Please provide all requested information to avoid processing errors or delays. Purchasers are responsible for the accuracy of all submitted measurements. By submitting this order, the purchaser agrees to Pulltarps Mfg. terms and conditions.

Purchaser Approval: Date:

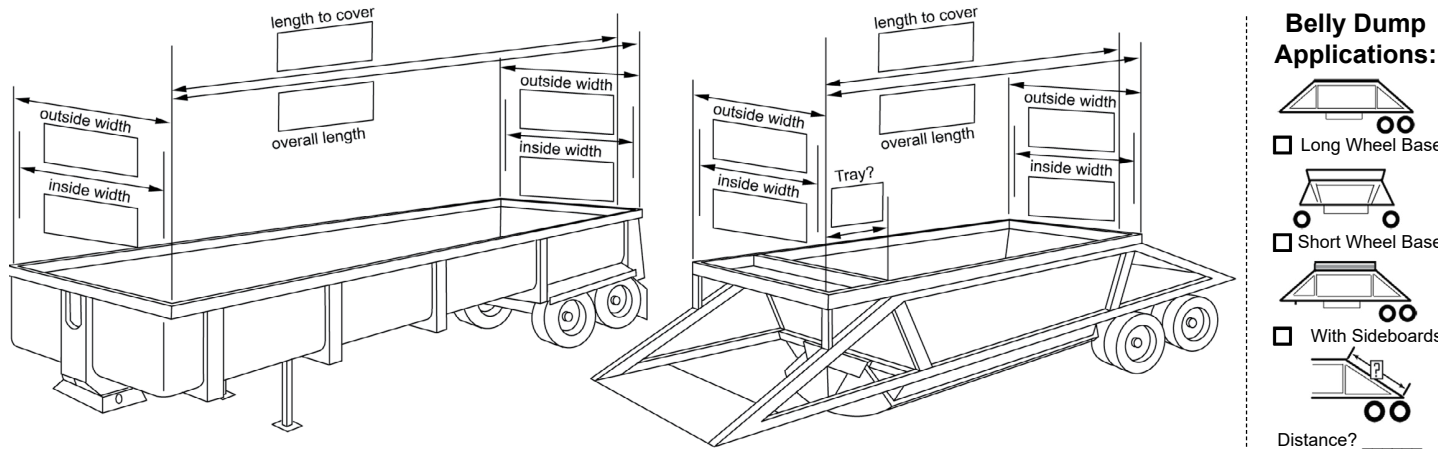
Order Desk # (877) 861-6265
Order Desk Fax # (619) 449-3782

Pulltarps Mfg. Order Form
Automatic & Semi-Automatic End Dump & Belly Dump

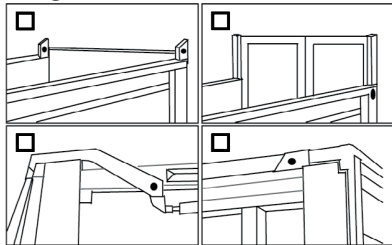
Bill to: (Company) Account# Ship to: (Company)
Address: Address:
City: State: Zip: City: State: Zip:
P.O#: Email: Phone: Fax:

Trailer Information Section: (Please give as much detail as possible)

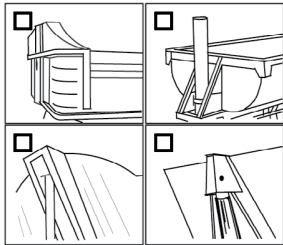
Trailer Mfg: Date of Mfg: GVWR#:



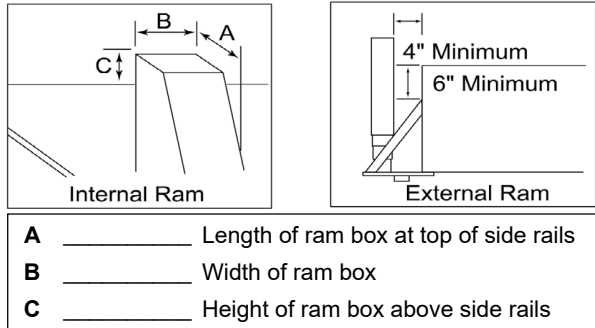
Tailgate:



Trailer Front:



Trailer Ram Detail:



Body Material:

Steel Aluminum

Nose Shape:

Square Radius Bullet

Materials Hauled:

Coal Sand Demo Wood Chips
Aggregate Asphalt Other

Housing Model:

Open 9000E Steel Protector Steel Protector + X-Pando Aluminator 7000E Aluminator 8500E SuperShield 9500E

System Type:

Manual Arms: Yes, No
Automatic Arm Kits: 4-Spring - 22', 25', 30', Inside Box, Single Spring, 33', 40', High Mount
Arm Type: Straight, Bent
Arm Material: Aluminum, Steel
Smart Switch Options: Basic Cab, External & In-Cab, External, Wireless Remote

Tarp Materials:

HD Mesh: Black
Super HD Mesh: Black
18 oz. Vinyl: Black
14 oz. Asphalt: Black

Options:

Electric Drive Arm Catcher Tarp Tamer Side Flaps

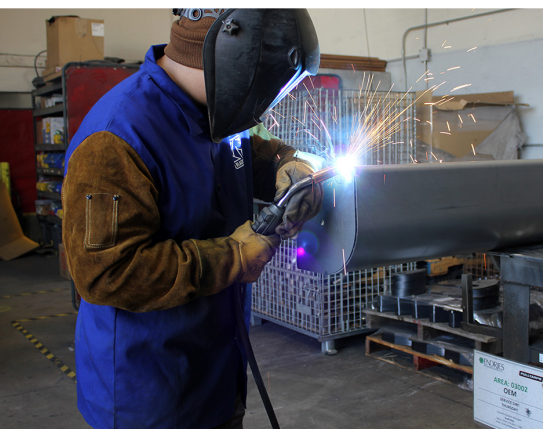
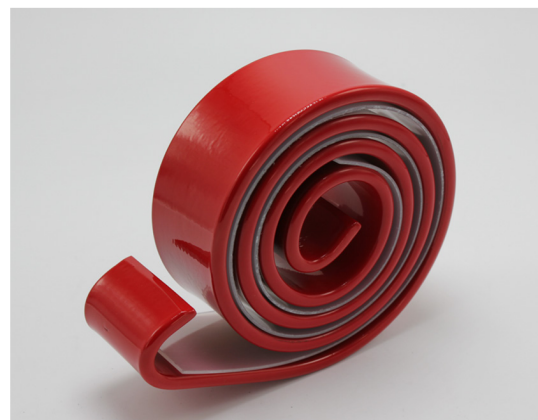
Quantity: Note: please use separate order form if ordering for different size equipment or different tarp system type or sizes.

ALL CUSTOM-MADE TARPS ARE NON-RETURNABLE

Taking actual and accurate physical measurements of your equipment are essential for a proper fitting and functioning tarp system. Please provide all requested information to avoid processing errors or delays. Purchasers are responsible for the accuracy of all submitted measurements. By submitting this order, the purchaser agrees to Pulltarps Mfg. terms and conditions.

Purchaser Approval: Date:

Order Desk # (877) 861-6265
Order Desk Fax # (619) 449-3782





A Safe Fleet Brand



CONTACT US TOLL FREE
877-861-6265 OR @ PULLTARPS.COM



PULLTARPS MFG.
1404 N. MARSHALL AVE.
EL CAJON, CALIFORNIA 92020
OFFICE: 619-449-8860
FAX: 619-449-3782



PULLTARPS.COM



FOLLOW US ON SOCIAL MEDIA

PROUD MEMBER OF: SWANA / OWMA / NWRA / ISRI / MADE IN CA / NTDA / NTEA / APWA / CTEA AETC / HDMA / IFAI

DISTRIBUTED WORLD WIDE



The Tarp Book-Catalog-20221110

Copyright ©2022 Safe Fleet and its subsidiaries. All rights reserved. No part of this publication may be reproduced by any means without written permission from Safe Fleet. The information in this publication is believed to be accurate. However, Safe Fleet does not make any representation or warranty to that effect and does not assume responsibility for any consequences resulting from use of such information. Revisions or new editions of the publication may be issued (or not issued) in our discretion to incorporate such changes.

1.877.861.6265
safefleet.net



SAFE  FLEET
Driving Safety Forward™