

ATTENTION

DURING INSTALLATION, SOME FABRICATION MAY BE REQUIRED.

Document #: P/# 607-0151

Revised: 08/13/25 WLH



Table of Contents

Tools & Parts

Recommended Tools.....	1
Installation Kit for 302 & 303 Systems.....	2

System Installation

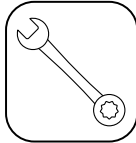
Assemble the Fixture.....	3-4
Fit Fixture to Front of Box - Drive Motor & Pulleys	5-6
Fasten the forward Pulley Boxes to the Dump Body.....	7
Attach the Rear Brackets to Fixed Install Kit & move to the Rear of the Truck Body	8



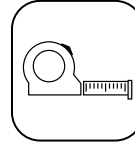
Recommended Tools



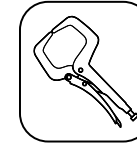
Safety Glasses and Gloves



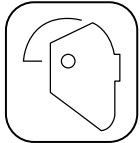
9/16" Wrench



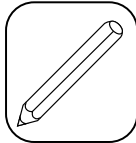
Tape Measure



C-Clamps or Vice Grips



Welding Equipment



Pencil or Marker

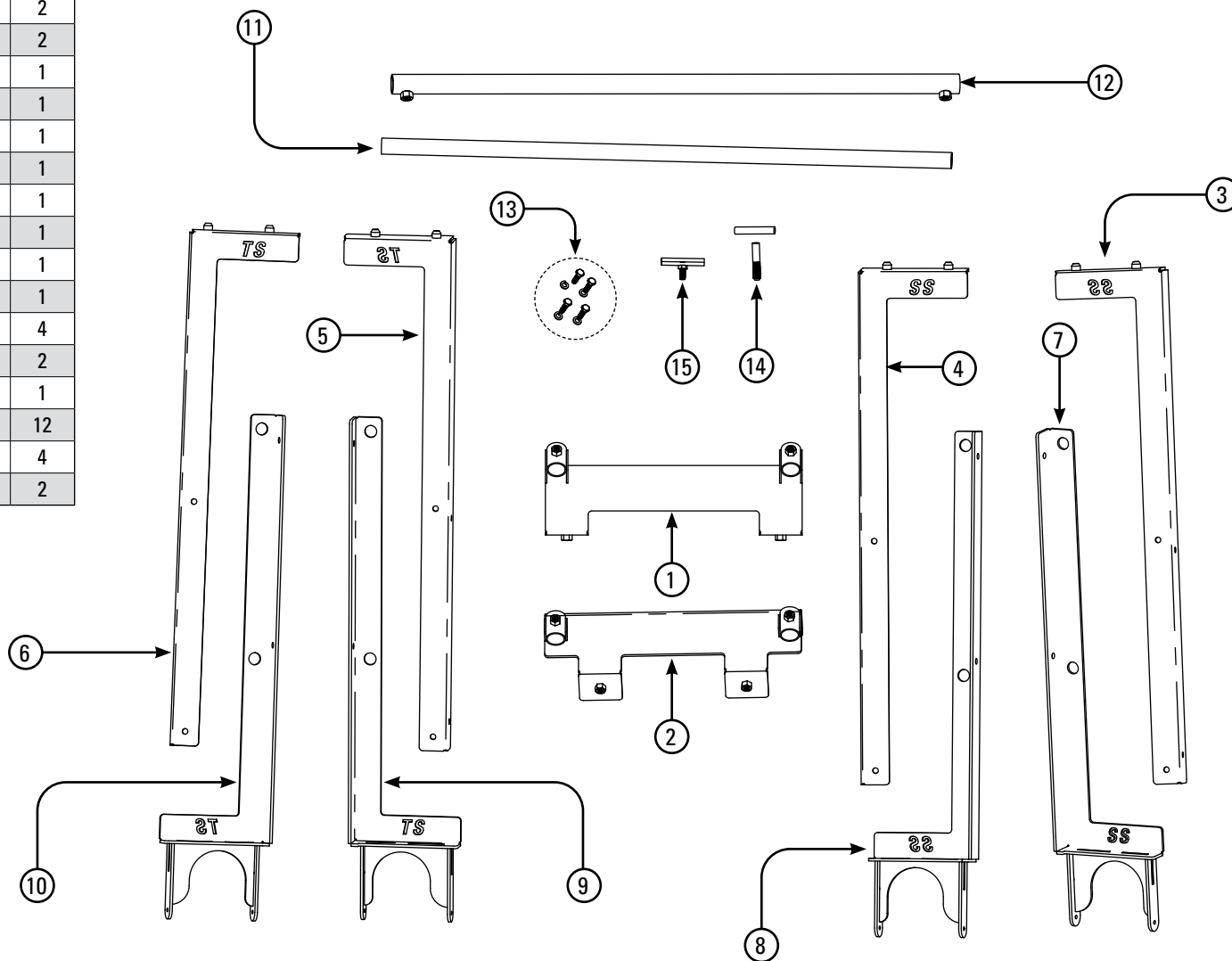


INSTALLATION MANUAL

Cable System Installation Fixture

Installation Kit for 302 & 303 Systems

ITEM	PART #	DESCRIPTION	QTY
1	502-0902	Diamond Rail Mounts	2
2	502-0903	Square Rail Mounts	2
3	502-0904	SS Front Frame Assembly	1
4	502-0905	SS Front Frame Assembly	1
5	502-0906	TS Front Frame Assembly	1
6	502-0907	TS Front Frame Assembly	1
7	502-0908	SS Rear Frame Assembly	1
8	502-0909	SS Rear Fram Assembly	1
9	502-0910	TS Rear Frame Assembly	1
10	502-0911	TS Rear Frame Assembly	1
11	502-0912	Extension Rods	4
12	502-0913	Slip Tubes for 502-0901	2
13	502-0914	Slip Tube End Bolt Bag	1
14	502-0915	1/2" "T" Handles	12
15	502-0916	3/8" "T" Handles	4
16	502-0936	Pulley Retainer Rod (Not Shown)	2





INSTALLATION MANUAL

Cable System Installation Fixture

Assemble the Fixture

Step 1: Layout Fixture components in their general assembly location (Fig. 1).

NOTE: TS is for Top Slider applications and SS is for Super Slider applications.

Fig. 1

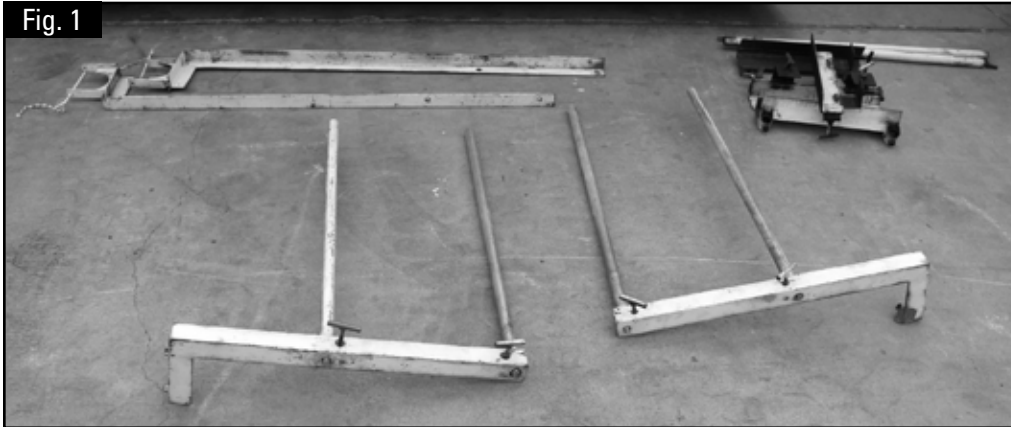
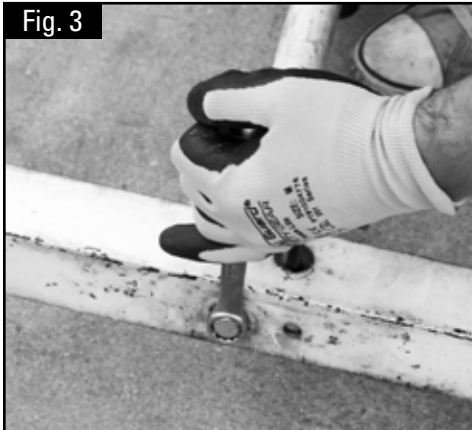


Fig. 3



Step 3: Secure assembly bolts with a 9/16" wrench (Fig. 3).

Fig. 4



Step 4: Slide the internal side of the front bracket onto the tubes on both front brackets (Fig. 4).

Fig. 2



Step 2: Connect the crossbars to the front sections on both of the fixtures (Fig. 2).

Fig. 5



Step 5: With the internal brackets on the tubes, connect the two halves of the front brackets. Secure both sides by loosley tightening with the T-Bolt (Fig. 5).



Assemble the Fixture

Step 6: Get the bow dimensions measuring slider to slider and then add an 1-3/4" to dimension and set your outside tubes to that dimension (Fig. 6).



Step 7: Loosen the T bolts and adjust the width (Fig. 7).



Fit Fixture to Front of Box - Drive Motor & Pulleys

Fig. 8



Step 8: With two people, lift the Fixture and place on the front of the box (Fig. 8).

Step 9: Check the width on the front and back of Fixture to make sure the width is parallel (Fig. 9).

NOTE: Not all truck boxes are square. Maintaining the same width on the Fixture will ensure that the cables will move freely.

Fig. 9





INSTALLATION MANUAL

Cable System Installation Fixture

Fit Fixture to Front of Box - Drive Motor & Pulleys

Step 10: Double check the width again and then tighten the fixture (Fig. 10).

NOTE: Check the width of the fixture frequently to ensure a good fit. Hold the bow up to making sure the holes for the cables align directly over the center of the pins on the fixture.



Fig. 11



Step 11: With the bracket in place, attach the front pulleys with C-Clamps or Vice Grips to the mounting pins on the front of the fixture (Fig. 11).

Fig. 12

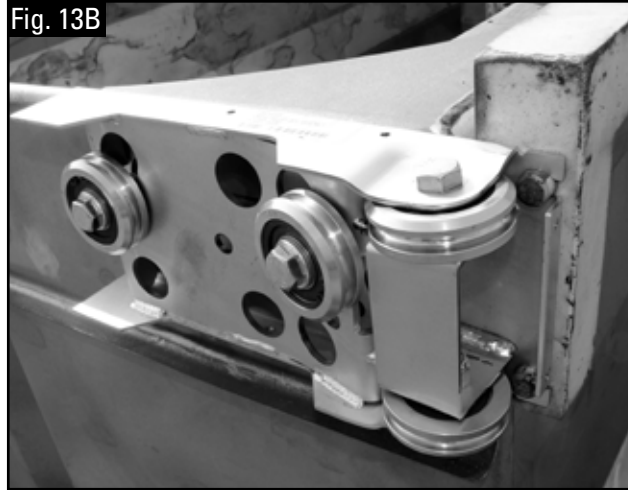


Step 12: With everything clamped in place, verify the pulley boxes are level across from each other and the pulley boxes are spaced evenly off each side the dump body (Fig. 12).



Fasten the forward Pulley Boxes to the Dump Body

Step 13: Mount both pulleys to the Fixture studs and verify the width (Fig. 13A, B & C).



Step 14: With the Pulleys square on the box, for testing purposes, tack the pulleys to the box (Fig. 14). This will allow you to remove the pulleys if adjustments need to be made.

NOTE: The pulleys will be bolted to the box later, once the cables are set.



Attach the Rear Brackets to Fixed Install Kit & move to the Rear of the Truck Body



Step 15: Slip the pulley assembly into the Half C on the fixture kit and drop the retaining pin to hold the pulley in place (Fig. 15).

NOTE: Measure the pulley to make sure the distance is the same from the pulley box to the rear pulley from one side as it is to the other.



Step 16: Figure out if you need to build out to the pulley for proper spacing for the distance of the rear pulley from the body (Fig. 16).



Step 17: After your spacing is built out, mark or weld the pulley to position (Fig. 17).